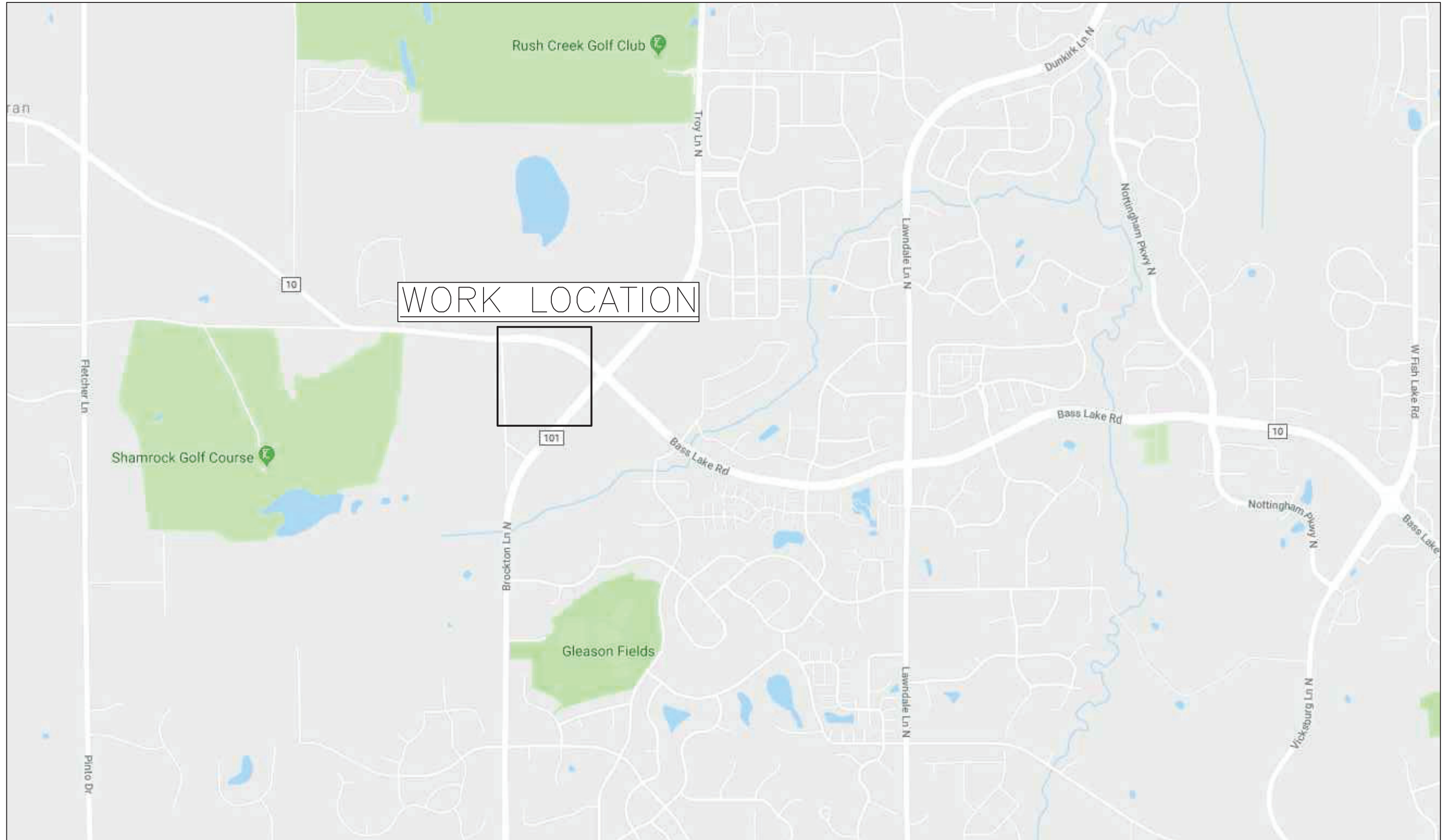


VICINITY MAP



PROJECT LOCATION:
RUSH CREEK COMMONS
7273 ALVARADO LN N
MAPLE GROVE, MN 55331

PROJECT: N.444228

PEARCE SERVICES

DRAWN BY:
MATT LARKEY
MLARKEY@PEARCE-SERVICES.COM

FIELD ENGINEER:
MATT LARKEY

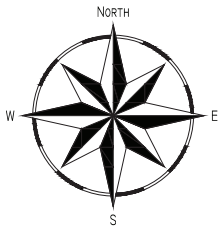


QWEST CORP. DBA. CENTURYLINK

ENGINEER:
BILL BYERS
PHONE:
(763) 712-5002
EMAIL:
Bill.Byers@CenturyLink.com

CPA:
MARCIE DEMAIO
PHONE:
(651) 312-5265
EMAIL:
Marcie.Demaio@CenturyLink.com





LEGEND

AREA OF USE	SYMBOL	DESCRIPTION	SYMBOL	DESCRIPTION
R/W	— — — — —	RIGHT-OF-WAY	○	FIRE HYDRANT
R/W	— — — — —	CENTER LINE OF ROAD	●	WATER METER
EOP	— — — — —	EDGE OF PAVEMENT	⊗	WATER VALVE
S/W	— — — — —	SIDEWALK	⊙	WATER MANHOLE
	- - - - -	EASEMENT	⊗	SANITARY SEWER MANHOLE
PL	— — — — —	PROPERTY LINE	⊙	GAS MANHOLE
SAN	— — — — —	SANITARY SEWER	⊙	GAS VALVE
W	— — — — —	WATER	⊙	GAS METER
SD	— — — — —	STORM DRAIN	⊙	TELEPHONE MANHOLE
G	— — — — —	GAS	⊙	TELEPHONE CABINET
	- - - - -	DITCH	⊙	TELEPHONE PEDESTAL
X	X X X X X	FENCE	⊙	POLE
o	o o o o o	GUARD RAIL	⊙	ANCHOR
RET	- - - - -	RETAINING WALL	⊙	ELECTRIC VAULT
E	- - - - -	AERIAL ELECTRICAL	⊙	ELECTRIC CABINET
E	- - - - -	BURIED ELECTRICAL	⊙	ELECTRIC MANHOLE
TV	- - - - -	AERIAL TELEVISION	⊙	UNKNOWN MANHOLE
TV	- - - - -	BURIED TELEVISION	⊙	CABLE MANHOLE
		RAILROAD TRACKS	⊙	CABLE CABINET
T	- - - - -	EXISTING TELEPHONE CABLE	⊙	CABLE HANDHOLE
F	- - - - -	EXISTING FIBER	⊙	CABLE HANDHOLE
EC	- - - - -	EXISTING CONDUIT	⊙	TREE
	- - - - -	NEW BURIED CABLE	⊙	SHRUBS/BUSHES
	- - - - -	NEW AERIAL CABLE	⊙	MAILBOX
	- - - - -	AERIAL DROP FIBER	⊙	MILE POST

CITY OF MAPLE GROVE PERMIT NOTES:

1. THIS JOB PLOWS APPROXIMATELY 350' OF FIBER OUTSIDE OF THE DEVELOPMENT. JOB PLACES 2550' OF FIBER, 26 PEDESTALS, AND 2 HANDHOLES, IN JOINT TRENCH.
2. ALL DISTURBED SURFACES WILL BE RESTORED TO AS GOOD AS OR BETTER CONDITION THAN FOUND CONDITION.
3. ALL EXISTING UNDERGROUND UTILITIES WILL BE LOCATED PRIOR TO CONSTRUCTION.
4. ANY CONFLICTING UNDERGROUND UTILITIES WILL BE POTHOLED.
5. 36" MINIMUM GROUND COVER WILL BE MAINTAINED
6. JOINT TRENCH CONTRACTOR TO DETERMINE TRENCH LOCATION.

PROJECT LOCATION:
RUSH CREEK COMMONS
7273 ALVARADO LN N
MAPLE GROVE, MN 55331

PROJECT: N.444228

PEARCE SERVICES

DRAWN BY:
MATT LARKEY
MLARKEY@PEARCE-SERVICES.COM

FIELD ENGINEER:
MATT LARKEY

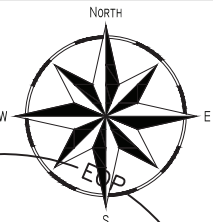


QWEST CORP. DBA. CENTURYLINK

ENGINEER:
BILL BYERS
PHONE:
(763) 712-5002
EMAIL:
Bill.Byers@CenturyLink.com

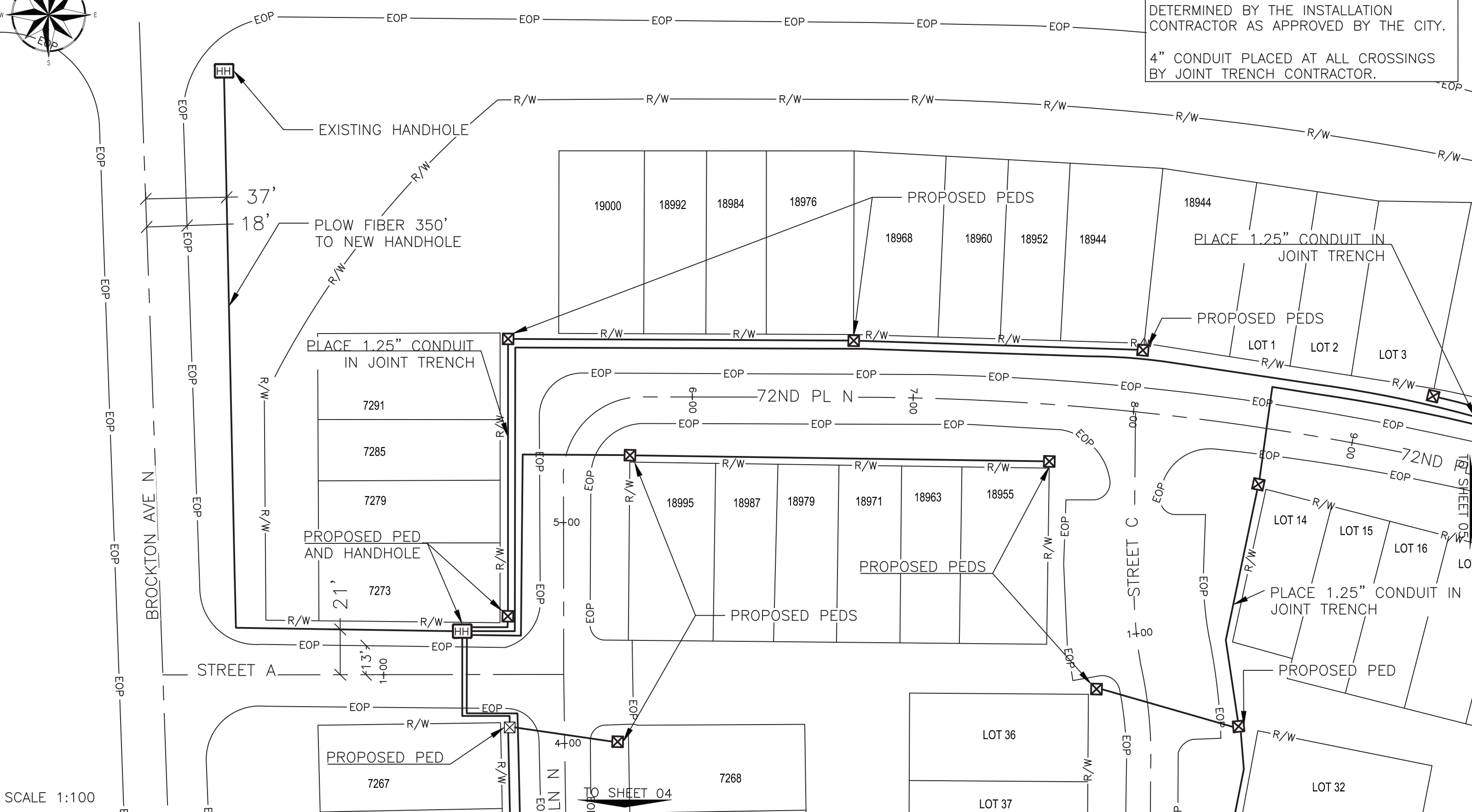
CPA:
MARCIE DEMAIO
PHONE:
(651) 312-5265
EMAIL:
Marcie.Demaio@CenturyLink.com





BASS LAKE RD

FINAL PLACEMENT AND DIMENSIONS WITHIN JOINT TRENCH BOUNDARIES WILL BE DETERMINED BY THE INSTALLATION CONTRACTOR AS APPROVED BY THE CITY.
4" CONDUIT PLACED AT ALL CROSSINGS BY JOINT TRENCH CONTRACTOR.



SCALE 1:100

PROJECT LOCATION:
RUSH CREEK COMMONS
7273 ALVARADO LN N
MAPLE GROVE, MN 55331

PROJECT: N.444228

PEARCE SERVICES

DRAWN BY:
MATT LARKEY
MLARKEY@PEARCE-SERVICES.COM
FIELD ENGINEER:
MATT LARKEY

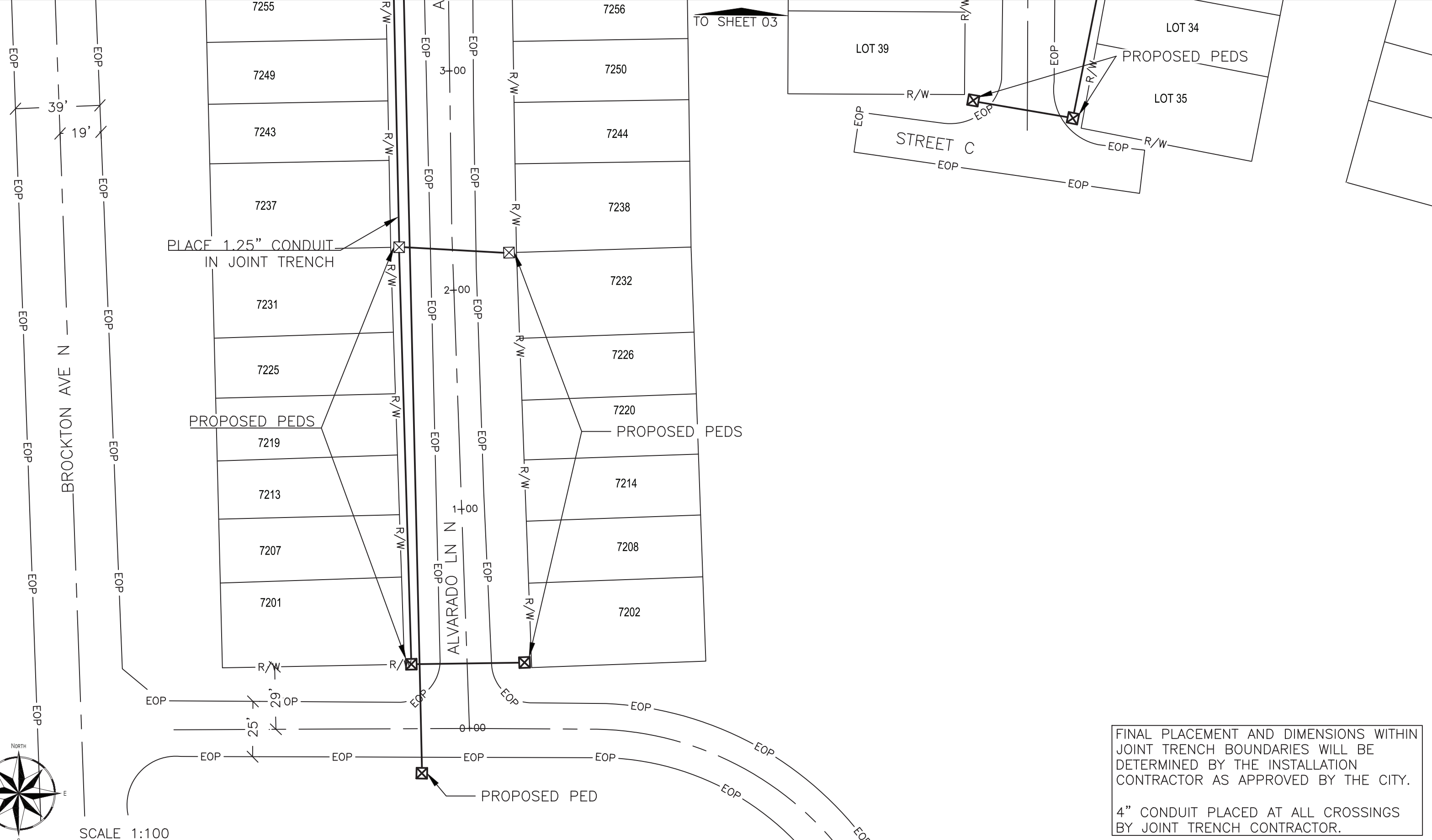


QWEST CORP. DBA. CENTURYLINK

ENGINEER:
BILL BYERS
PHONE:
(763) 712-5002
EMAIL:
Bill.Byers@CenturyLink.com

CPA:
MARCIE DEMAIO
PHONE:
(651) 312-5265
EMAIL:
Marcie.Demaio@CenturyLink.com





FINAL PLACEMENT AND DIMENSIONS WITHIN JOINT TRENCH BOUNDARIES WILL BE DETERMINED BY THE INSTALLATION CONTRACTOR AS APPROVED BY THE CITY.

4" CONDUIT PLACED AT ALL CROSSINGS BY JOINT TRENCH CONTRACTOR.

PROJECT LOCATION:
RUSH CREEK COMMONS
7273 ALVARADO LN N
MAPLE GROVE, MN 55331

PROJECT: N.444228

PEARCE SERVICES

DRAWN BY:
MATT LARKEY
MLARKEY@PEARCE-SERVICES.COM

FIELD ENGINEER:
MATT LARKEY

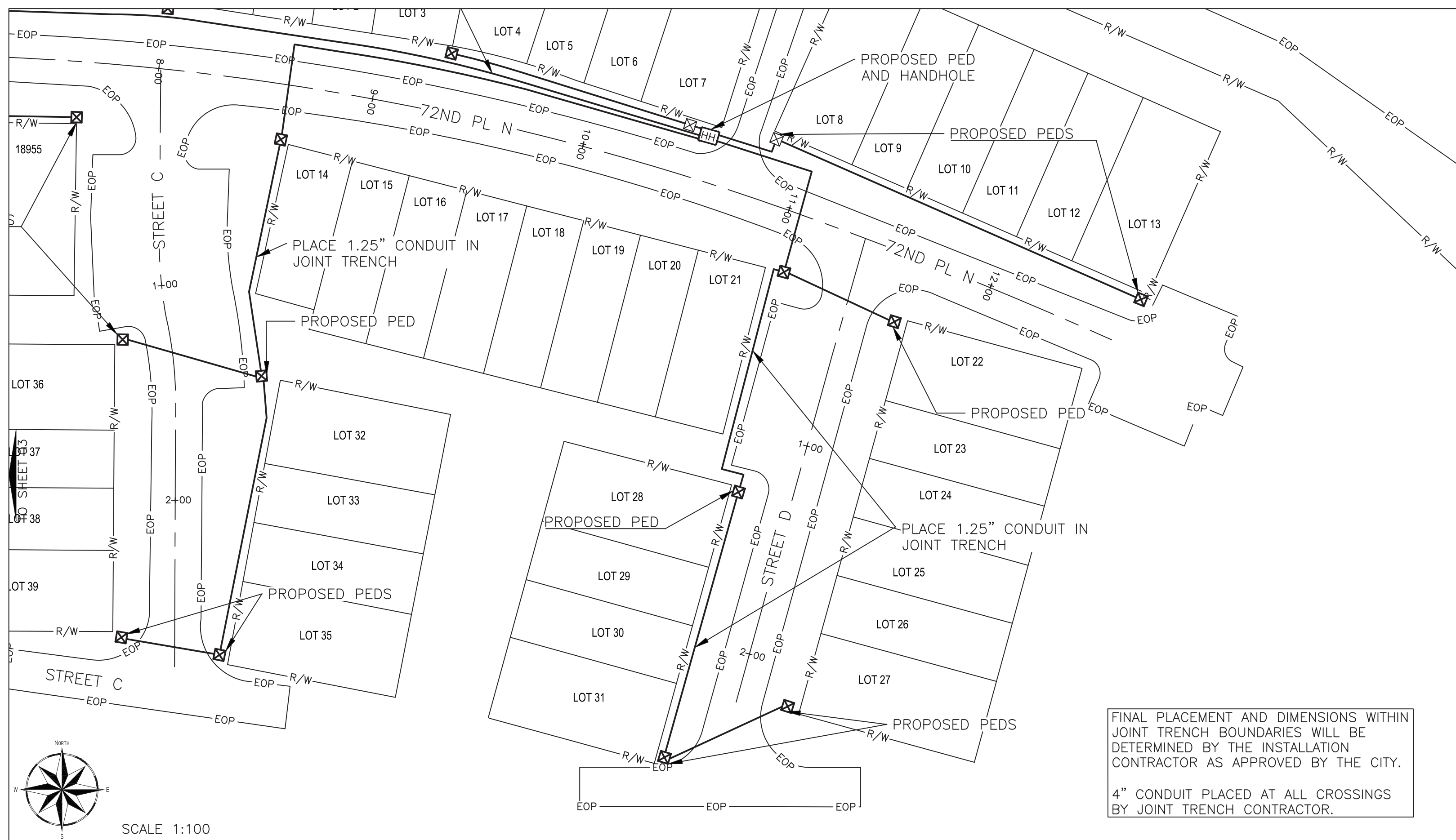


QWEST CORP. DBA. CENTURYLINK

ENGINEER:
BILL BYERS
PHONE:
(763) 712-5002
EMAIL:
Bill.Byers@CenturyLink.com

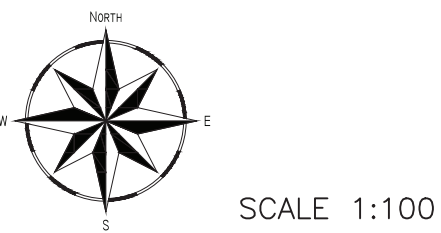
CPA:
MARCIE DEMAIO
PHONE:
(651) 312-5265
EMAIL:
Marcie.Demaio@CenturyLink.com





FINAL PLACEMENT AND DIMENSIONS WITHIN JOINT TRENCH BOUNDARIES WILL BE DETERMINED BY THE INSTALLATION CONTRACTOR AS APPROVED BY THE CITY.

4" CONDUIT PLACED AT ALL CROSSINGS BY JOINT TRENCH CONTRACTOR.



PROJECT LOCATION:
RUSH CREEK COMMONS
7273 ALVARADO LN N
MAPLE GROVE, MN 55331

PROJECT: N.444228

PEARCE SERVICES

DRAWN BY:
MATT LARKEY
MLARKEY@PEARCE-SERVICES.COM

FIELD ENGINEER:
MATT LARKEY



QWEST CORP. DBA. CENTURYLINK

ENGINEER:
BILL BYERS
PHONE:
(763) 712-5002
EMAIL:
Bill.Byers@CenturyLink.com

CPA:
MARCIE DEMAIO
PHONE:
(651) 312-5265
EMAIL:
Marcie.Demaio@CenturyLink.com

