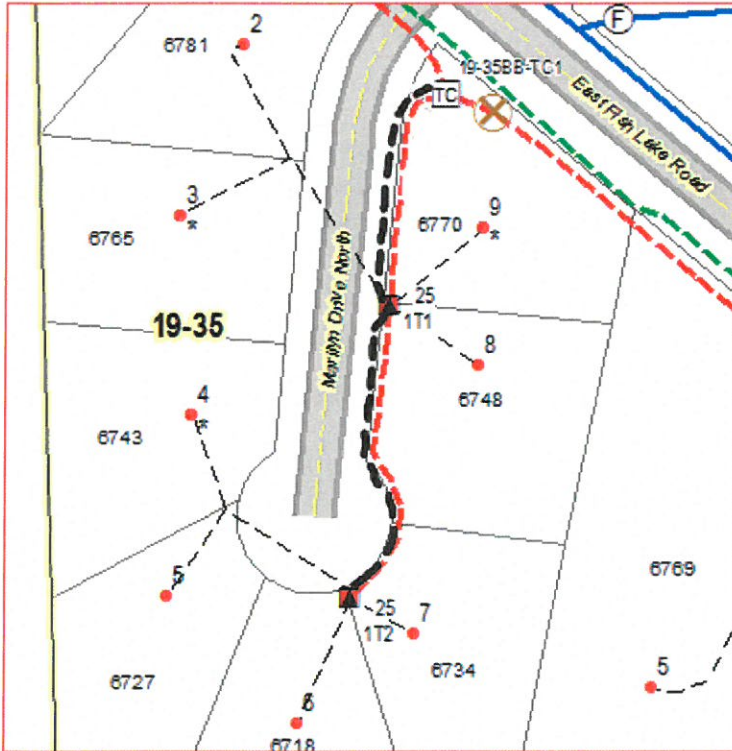


Wright-Hennepin Electric Cooperative
Work Order# 772326

Ref: Upgrade of underground primary electric cable from #2 to 1/0 primary.

The black dashed lines running parallel with the red dashed lines is the location of where the upgrade will occur. This is due to faults occurring to the old #2 primary electric cable.



Rick Vanderstappen 09-08-2016



Wright-Hennepin Cooperative Electric Association
6800 Electric Drive ♦ P.O. Box 330 ♦ Rockford, MN 55373
Fax (612)477-3054 ♦ Phone (612)477-3000 ♦ 1-800-943-2667
rvanderstappen@whe.org Cell: (612) 720-4450 Office: (763) 477-3091