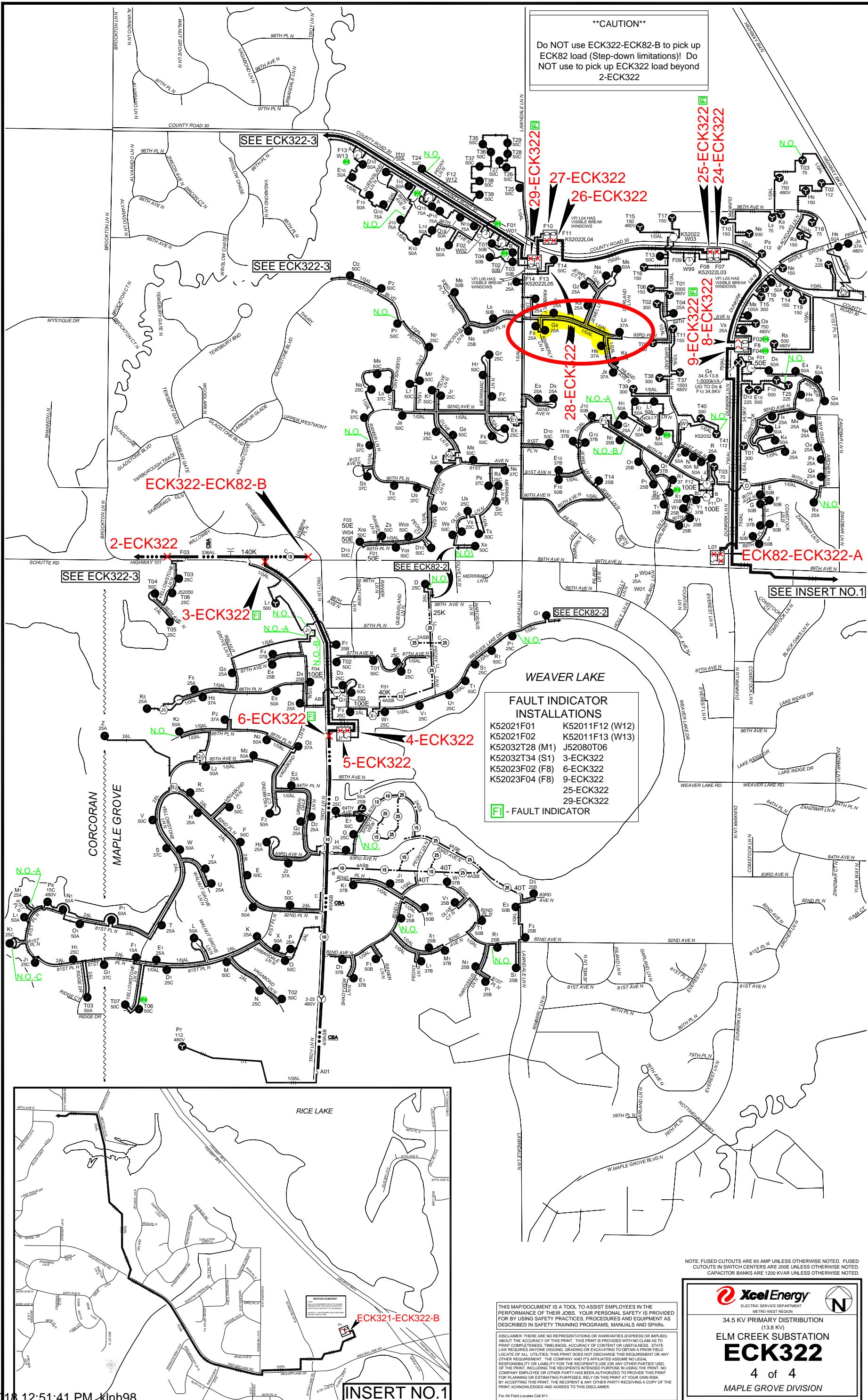


****CAUTION****
 Do NOT use ECK322-ECK82-B to pick up ECK82 load (Step-down limitations) Do NOT use to pick up ECK322 load beyond 2-ECK322



FAULT INDICATOR INSTALLATIONS

K52021F01	K52011F12 (W12)
K52021F02	K52011F13 (W13)
K52032T28 (M1)	J52080T06
K52032T34 (S1)	3-ECK322
K52023F02 (F8)	6-ECK322
K52023F04 (F8)	9-ECK322
	25-ECK322
	29-ECK322

FI - FAULT INDICATOR

NOTE: FUSED CUTOUPS ARE 65 AMP UNLESS OTHERWISE NOTED. FUSED CUTOUPS IN SWITCH CENTERS ARE 200E UNLESS OTHERWISE NOTED. CAPACITOR BANKS ARE 1200 KVAR UNLESS OTHERWISE NOTED.

Xcel Energy
 ELECTRIC SERVICE DEPARTMENT
 METRO WEST REGION

34.5 KV PRIMARY DISTRIBUTION
 (13.8 KV)

ELM CREEK SUBSTATION
ECK322
 4 of 4
 MAPLE GROVE DIVISION

THIS MAP/DOCUMENT IS A TOOL TO ASSIST EMPLOYEES IN THE PERFORMANCE OF THEIR JOBS. YOUR PERSONAL SAFETY IS PROVIDED FOR BY USING SAFETY PRACTICES, PROCEDURES AND EQUIPMENT AS DESCRIBED IN SAFETY TRAINING PROGRAMS, MANUALS AND SPARS.

DISCLAIMER: THERE ARE NO REPRESENTATIONS OR WARRANTIES (EXPRESS OR IMPLIED) ABOUT THE ACCURACY OF THIS PRINT. THIS PRINT IS PROVIDED WITH NO CLAIMS AS TO PRINT COMPLETENESS, TIMELINESS, ACCURACY OF CONTENT OR USEFULNESS. STATE LAW REQUIRES ANYONE DIGGING, GRADING OR EXCAVATING TO OBTAIN A PRIOR FIELD LOCATE OF ALL UTILITIES; THIS PRINT DOES NOT DISCHARGE THIS REQUIREMENT OR ANY OTHER REQUIREMENT. THE COMPANY AND ITS AFFILIATES ASSUME NO LEGAL RESPONSIBILITY OR LIABILITY FOR THE RECIPIENT'S USE OR ANY OTHER PARTIES' USE OF THE PRINT, INCLUDING THE RECIPIENT'S INTENDED PURPOSE IN USING THE PRINT. NO COMPANY EMPLOYEE OR OTHER PARTY HAS BEEN AUTHORIZED TO PROVIDE THIS PRINT FOR PLANNING OR ESTIMATING PURPOSES; RELY ON THIS PRINT AT YOUR OWN RISK. BY ACCEPTING THIS PRINT, THE RECIPIENT & ANY OTHER PARTY RECEIVING A COPY OF THE PRINT ACKNOWLEDGES AND AGREES TO THIS DISCLAIMER.

For All Field Locates Call 811.

INSERT NO.1