

# VICINITY MAP



**15315 GROVE CIRCLE N.**

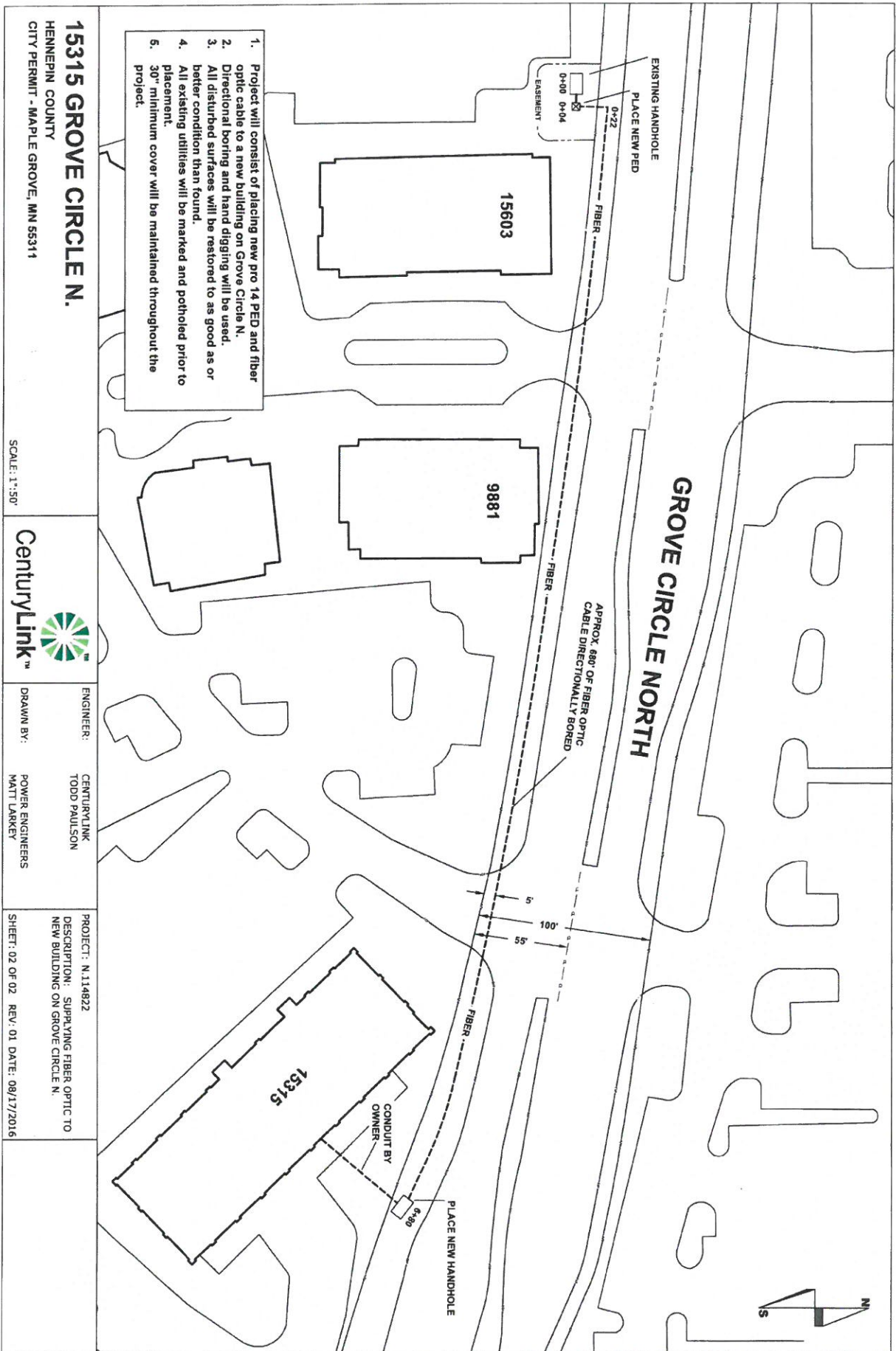
HENNEPIN COUNTY  
CITY PERMIT - MAPLE GROVE, MN 55311

SCALE: N.T.S.



ENGINEER: CENTURYLINK  
TODD PAULSON  
DRAWN BY: POWER ENGINEERS  
MATT LARKEY

PROJECT: N.114822  
DESCRIPTION: SUPPLYING FIBER OPTIC TO  
NEW BUILDING ON GROVE CIRCLE N.  
SHEET: 01 OF 02 REV: 01 DATE: 08/17/2016



1. Project will consist of placing new pro 14 PED and fiber optic cable to a new building on Grove Circle N.
2. Directional boring and hand digging will be used.
3. All disturbed surfaces will be restored to as good as or better condition than found.
4. All existing utilities will be marked and potholed prior to placement.
5. 30" minimum cover will be maintained throughout the project.

**15315 GROVE CIRCLE N.**

HENNEPIN COUNTY  
CITY PERMIT - MAPLE GROVE, MN 55311

SCALE: 1"=50'



ENGINEER: CENTURYLINK  
TODD PAULSON  
DRAWN BY: POWER ENGINEERS  
MATT LARKEY

PROJECT: N.114822  
DESCRIPTION: SUPPLYING FIBER OPTIC TO NEW BUILDING ON GROVE CIRCLE N.  
SHEET: 02 OF 02 REV: 01 DATE: 08/17/2016