

**Directional Drilling**

**89th Ave. N**

**472'**

**496'**

**438'**

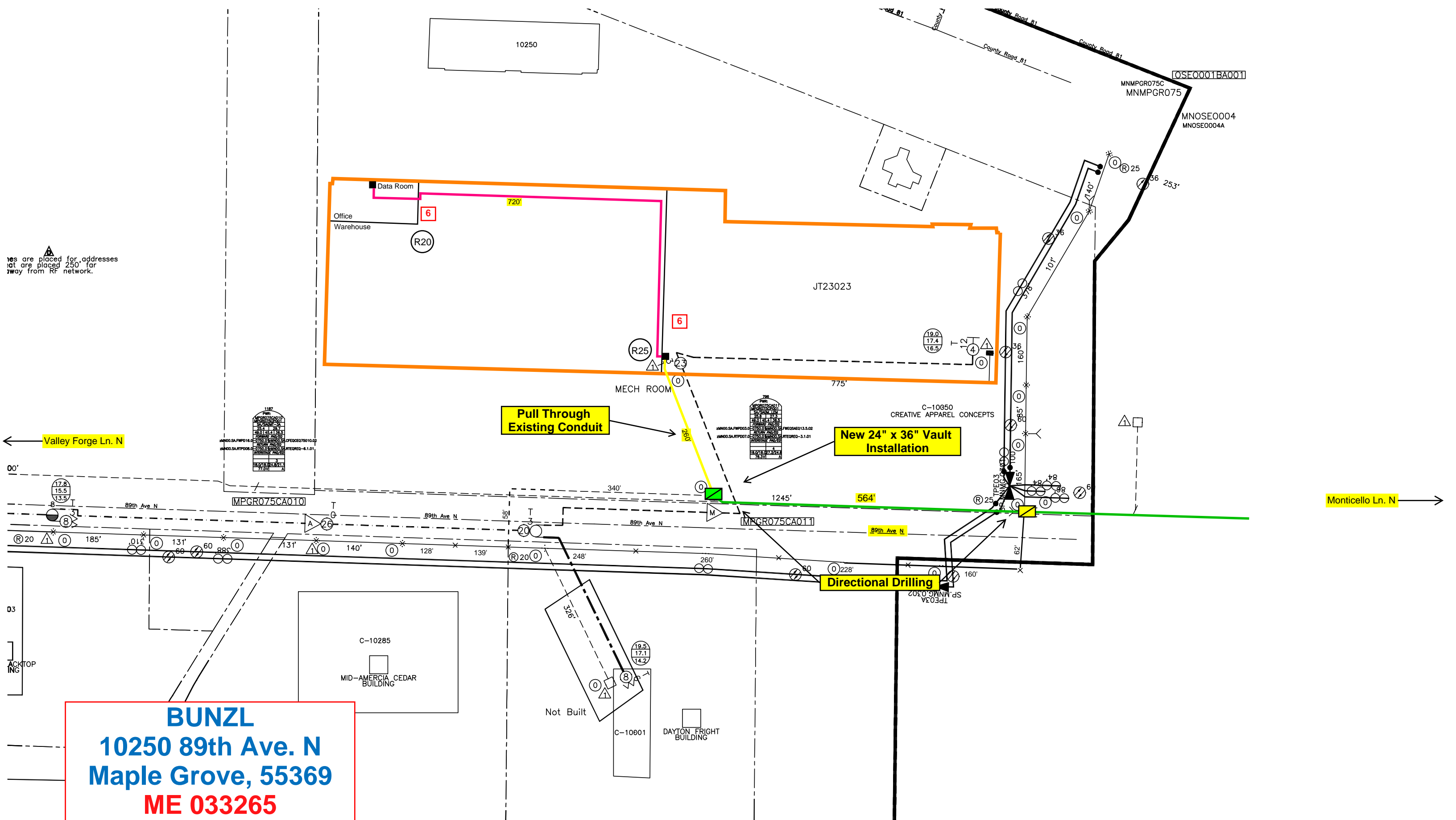
**Pull Through Existing Conduit**

**220'**

**344'**

**BUNZL**  
**10250 89th Ave. N**  
**Maple Grove, 55369**  
**ME 033265**  
 Map 1 of 2

Addresses are placed for addresses that are placed 250' for away from RF network.



**BUNZL**  
**10250 89th Ave. N**  
**Maple Grove, 55369**  
**ME 033265**  
Map 2 of 2