

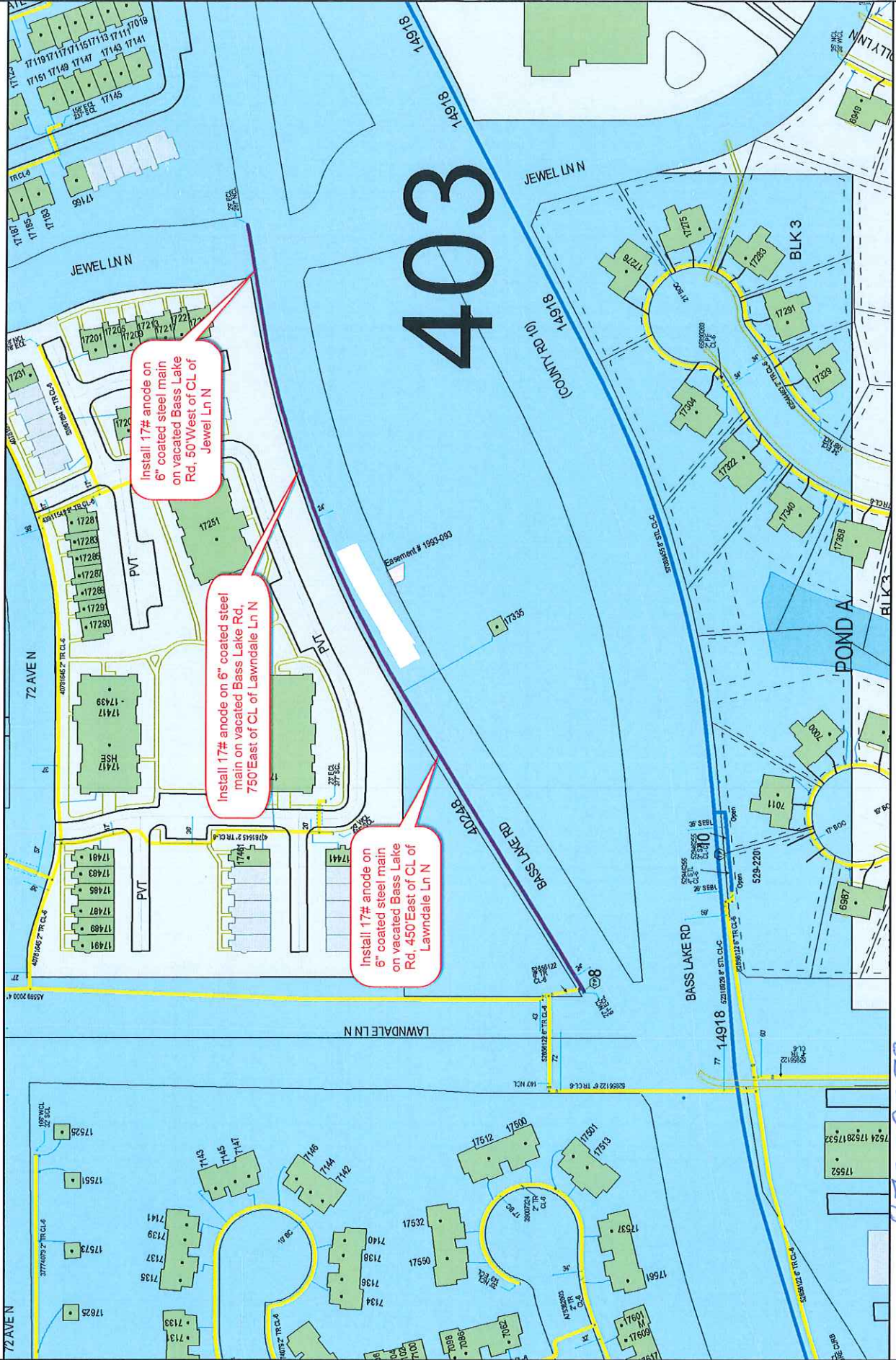
GENERAL LOCATION ONLY.
DO NOT USE TO LOCATE FOR EXCAVATION.
CALL 1-800-252-1166 FOR ONSITE LOCATIONS AND STAKING.



Scale: 1" = 167'



North



Install 17# anode on 6" coated steel main on vacated Bass Lake Rd, 50' West of CL of Jewel Ln N

Install 17# anode on 6" coated steel main on vacated Bass Lake Rd, 750' East of CL of Lawndale Ln N

Install 17# anode on 6" coated steel main on vacated Bass Lake Rd, 450' East of CL of Lawndale Ln N

403

Work Order #: 87509278

Design Date: 8/30/18

City: Maple Grove

CP Section #: 40248

Designed By: Mike McCall

Quad/Sec/Twp/Rng: SW 1/4, Sec 29, 119/22

CP Area: 403

Designer Phone #: 612-979-8022