

**87420846**  
M52900 MAPLE GROVE

ONE CALL:  
Hennepin  
\*SW3 T119/R22  
\* = this Page

**LEGEND:**  
 ACTIVE  
 DESIGNED  
 PROPOSED  
 ABANDONED  
 INTERRUPTIBLE  
 EXISTING  
 NORMAL  
 FUTURE  
 PROPOSED

Address: 14151 Territorial Rd  
 Customer: Territorial Woods  
 Contact Person: Chris Skiba  
 Contact Phone: 612-309-3343  
 Sales Rep: Jake Schwietering  
 Sales Rep Phone: 763-785-5432  
 Construction Hotline: 612-321-5310  
 Copies To Pipeline Integrity: No  
 Curb Valve: Yes  
 Copies to Corrosion: No  
 Corrosion Approval: No  
 Follow Internal Pipe Sampling Requirements? No  
 GFIP#: NA  
 Permits: City  
 Requested Install Date: 10/1/18

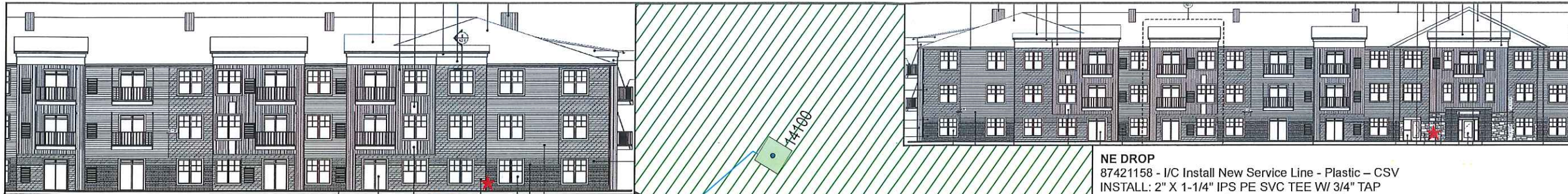
Approval: **SMY 8/31/18**

**PROJECT DESCRIPTION:**  
Territorial Woods

**DESIGNER:** John Miller  
**PHONE #:** 612-321-5231  
**DRAWN BY:** John Miller  
**DESIGN DATE:** 8/28/2018

Revised Print  
 Destroy All Others  
 Revision History  
 Date:  
 Description:  
 Design Approval:

IC Services  
 SCAN DATE: 1" : 80'  
 SHEET 1 OF 1

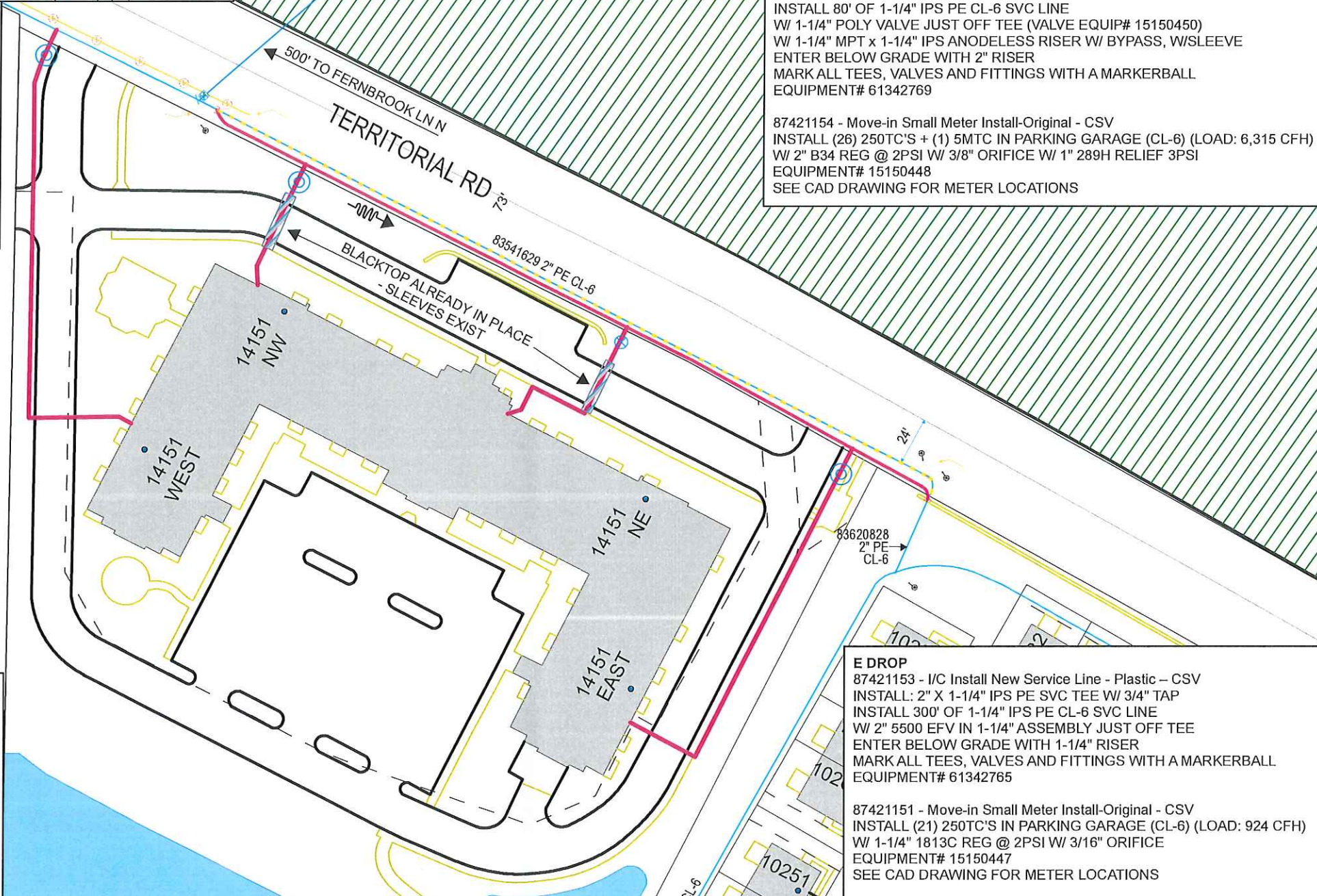
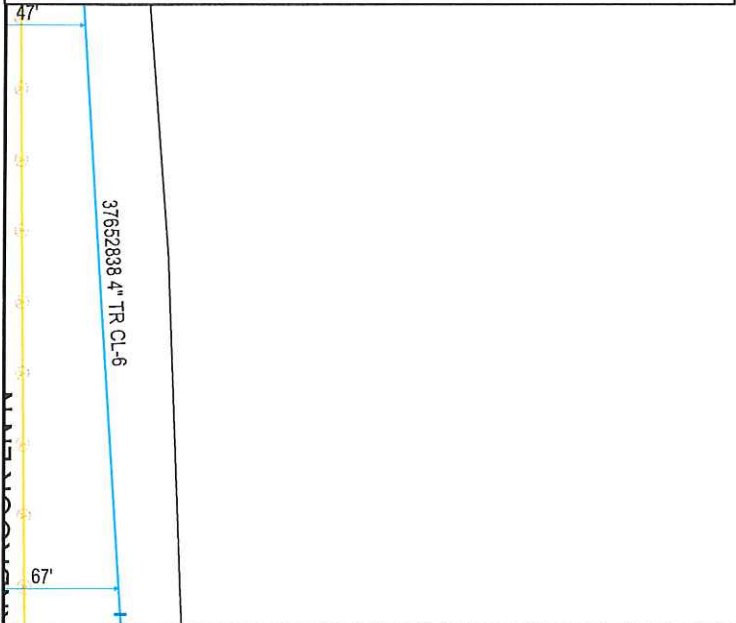


**NW DROP**  
 87420846 - I/C Install New Service Line - Plastic - CSV  
 INSTALL: 2" X 1-1/4" IPS PE SVC TEE W/ 3/4" TAP  
 INSTALL 80' OF 1-1/4" IPS PE CL-6 SVC LINE  
 W/ 2" 5500 EFV IN 1-1/4" ASSEMBLY JUST OFF TEE  
 ENTER BELOW GRADE WITH 1-1/4" RISER  
 MARK ALL TEES, VALVES AND FITTINGS WITH A MARKERBALL  
 EQUIPMENT# 61342761

87420844 - Move-in Small Meter Install-Original - CSV  
 INSTALL (27) 250TC'S IN PARKING GARAGE (CL-6) (LOAD: 1,188 CFH)  
 W/ 1-1/4" 1813C REG @ 2PSI W/ 3/16" ORIFICE  
 EQUIPMENT# 15150445  
 SEE CAD DRAWING FOR METER LOCATIONS

**NE DROP**  
 87421158 - I/C Install New Service Line - Plastic - CSV  
 INSTALL: 2" X 1-1/4" IPS PE SVC TEE W/ 3/4" TAP  
 INSTALL 80' OF 1-1/4" IPS PE CL-6 SVC LINE  
 W/ 1-1/4" POLY VALVE JUST OFF TEE (VALVE EQUIP# 15150450)  
 W/ 1-1/4" MPT x 1-1/4" IPS ANODELESS RISER W/ BYPASS, W/SLEEVE  
 ENTER BELOW GRADE WITH 2" RISER  
 MARK ALL TEES, VALVES AND FITTINGS WITH A MARKERBALL  
 EQUIPMENT# 61342769

87421154 - Move-in Small Meter Install-Original - CSV  
 INSTALL (26) 250TC'S + (1) 5MTC IN PARKING GARAGE (CL-6) (LOAD: 6,315 CFH)  
 W/ 2" B34 REG @ 2PSI W/ 3/8" ORIFICE W/ 1" 289H RELIEF 3PSI  
 EQUIPMENT# 15150448  
 SEE CAD DRAWING FOR METER LOCATIONS



**W DROP**  
 87421149 - I/C Install New Service Line - Plastic - CSV  
 INSTALL: 2" X 1-1/4" IPS PE SVC TEE W/ 3/4" TAP  
 INSTALL 300' OF 1-1/4" IPS PE CL-6 SVC LINE  
 W/ 2" 5500 EFV IN 1-1/4" ASSEMBLY JUST OFF TEE  
 ENTER BELOW GRADE WITH 1-1/4" RISER  
 MARK ALL TEES, VALVES AND FITTINGS WITH A MARKERBALL  
 EQUIPMENT# 61342763

87420848 - Move-in Small Meter Install-Original - CSV  
 INSTALL (24) 250TC'S IN PARKING GARAGE (CL-6) (LOAD: 1,056 CFH)  
 W/ 1-1/4" 1813C REG @ 2PSI W/ 3/16" ORIFICE  
 EQUIPMENT# 15150446  
 SEE CAD DRAWING FOR METER LOCATIONS

**E DROP**  
 87421153 - I/C Install New Service Line - Plastic - CSV  
 INSTALL: 2" X 1-1/4" IPS PE SVC TEE W/ 3/4" TAP  
 INSTALL 300' OF 1-1/4" IPS PE CL-6 SVC LINE  
 W/ 2" 5500 EFV IN 1-1/4" ASSEMBLY JUST OFF TEE  
 ENTER BELOW GRADE WITH 1-1/4" RISER  
 MARK ALL TEES, VALVES AND FITTINGS WITH A MARKERBALL  
 EQUIPMENT# 61342765

87421151 - Move-in Small Meter Install-Original - CSV  
 INSTALL (21) 250TC'S IN PARKING GARAGE (CL-6) (LOAD: 924 CFH)  
 W/ 1-1/4" 1813C REG @ 2PSI W/ 3/16" ORIFICE  
 EQUIPMENT# 15150447  
 SEE CAD DRAWING FOR METER LOCATIONS



DESIGNER EXPRESS DESIGN  
8/28/2018 7:45:15 AM