



MCImetro

ACCESS TRANSMISSION SERVICES CORP
D/B/A VERIZON ACCESS TRANSMISSION
OUTSIDE PLANT CONSTRUCTION
FIBER OPTIC CABLE ROUTE

PINESOL

SITE CODE: HENNMN

BH06 / GOLDEN VAL-LIONS / 078PINESOL

MAPLE GROVE, MN

PROJECT STATUS: ISSUED FOR CONSTRUCTION

STATUS DATE: 12/7/18

THE SUBSURFACE UTILITY INFORMATION IN THIS PLAN IS UTILITY QUALITY LEVEL D. THIS UTILITY QUALITY LEVEL WAS DETERMINED ACCORDING TO THE GUIDELINES OF C/ASCE 38-02, ENTITLED STANDARD GUIDELINES FOR THE COLLECTION AND DEPICTION OF EXISTING SUBSURFACE UTILITY DATA. IT SHALL BE THE CONTRACTORS RESPONSIBILITY TO UTILIZE THE GOPHER STATE ONE CALL EXCAVATION NOTICE SYSTEM REQUIRED MN STATUTE, CHAPTER 216D FOR ALL UNDERGROUND UTILITY LOCATIONS.



PROJECT: 078PINESOL

BH06 / GOLDEN VAL-LIONS

MAPLE GROVE, MN

CLARIFICATION NO. QUANTITY

CLARIFICATION NO.	QUANTITY

MCImetro
ACCESS TRANSMISSION SERVICES, LLC
MCI
OUTSIDE PLANT CONSTRUCTION
TITLE: FIBER OPTIC CABLE ROUTE
078PINESOL

DATE: 8/23/18

OSP TECH: NW

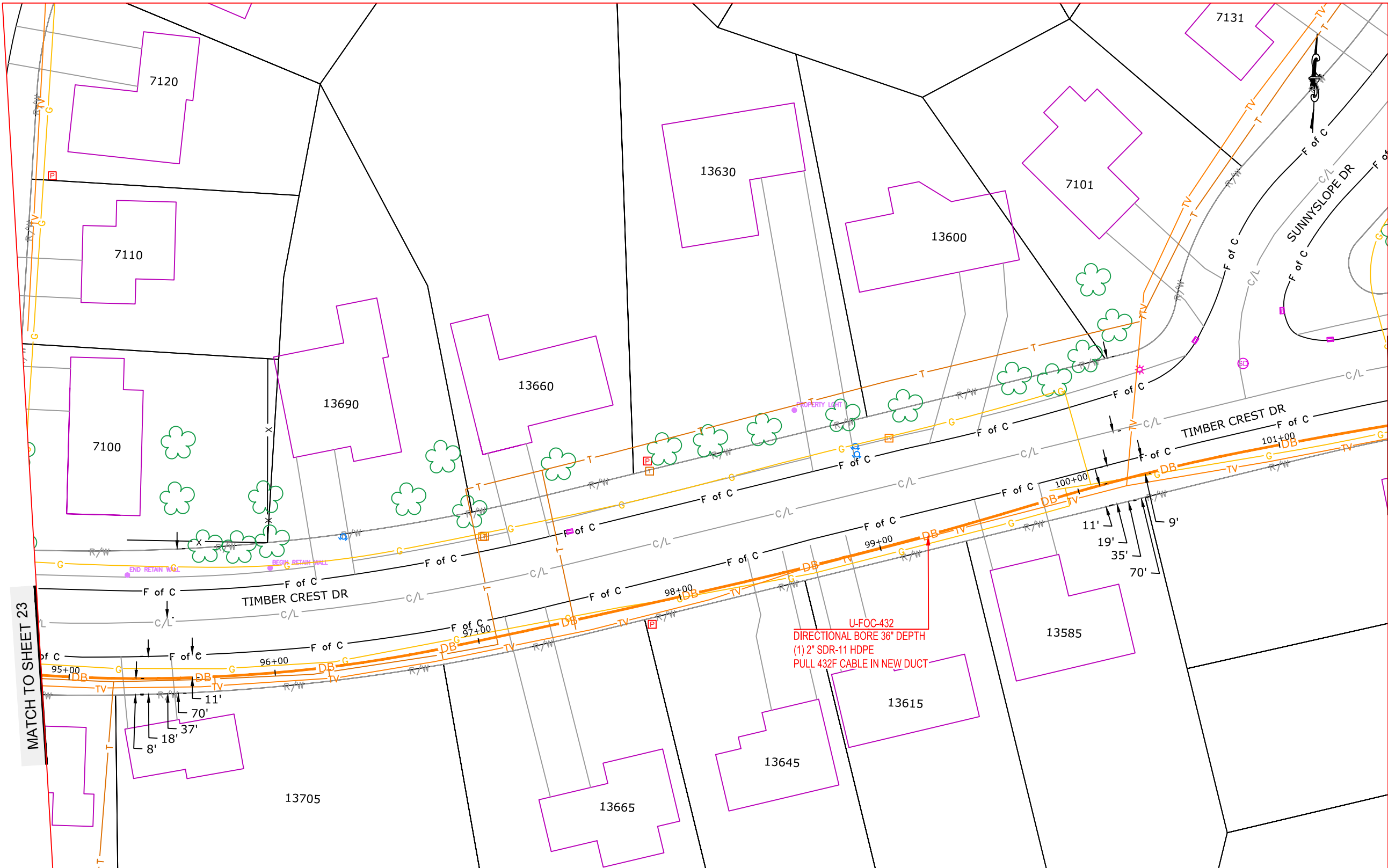
DRAWN BY: NW

REVISIONS

DATE	DESCRIPTION	INITIAL
7/26/18	Construction Package	NW
8/23/18	QC	CLM

EXCEPT AS MAY BE OTHERWISE PROVIDED BY CONTRACT, THESE DRAWINGS AND SPECIFICATIONS SHALL REMAIN THE PROPERTY OF MCI COMMUNICATIONS SERVICES, INC., BOTH BEING ISSUED IN STRICT CONFIDENCE AND SHALL NOT BE REPRODUCED, COPIED, OR USED FOR ANY PURPOSE WITHOUT SPECIFIC WRITTEN PERMISSION.

SCALE
HORIZONTAL: 1"=50'
VERTICAL: 1"=50'
MP _____ TO MP _____
SHEET 24 OF 32
FILE: 078PINESOL



MATCH TO SHEET 23

MATCH TO SHEET 25

THE SUBSURFACE UTILITY INFORMATION IN THIS PLAN IS UTILITY QUALITY LEVEL D. THIS UTILITY QUALITY LEVEL WAS DETERMINED ACCORDING TO THE GUIDELINES OF C/ASCE 38-02, ENTITLED STANDARD GUIDELINES FOR THE COLLECTION AND DEPICTION OF EXISTING SUBSURFACE UTILITY DATA. IT SHALL BE THE CONTRACTORS RESPONSIBILITY TO UTILIZE THE GOPHER STATE ONE CALL EXCAVATION NOTICE SYSTEM REQUIRED MN STATUTE, CHAPTER 216D FOR ALL UNDERGROUND UTILITY LOCATIONS.



PROJECT: 078PINESOL

BH06 / GOLDEN VAL-LIONS

MAPLE GROVE, MN

CLARIFICATION NO. QUANTITY

CLARIFICATION NO.	QUANTITY

MCImetro
ACCESS TRANSMISSION SERVICES, LLC
OUTSIDE PLANT CONSTRUCTION
TITLE: FIBER OPTIC CABLE ROUTE
078PINESOL

DATE: 8/23/18

OSP TECH: NW

DRAWN BY: NW

REVISIONS

DATE	DESCRIPTION	INITIAL
7/26/18	Construction Package	NW
8/23/18	QC	CLM

EXCEPT AS MAY BE OTHERWISE PROVIDED BY CONTRACT, THESE DRAWINGS AND SPECIFICATIONS SHALL REMAIN THE PROPERTY OF MCI COMMUNICATIONS SERVICES, INC., BOTH BEING ISSUED IN STRICT CONFIDENCE AND SHALL NOT BE REPRODUCED, COPIED, OR USED FOR ANY PURPOSE WITHOUT SPECIFIC WRITTEN PERMISSION.

SCALE

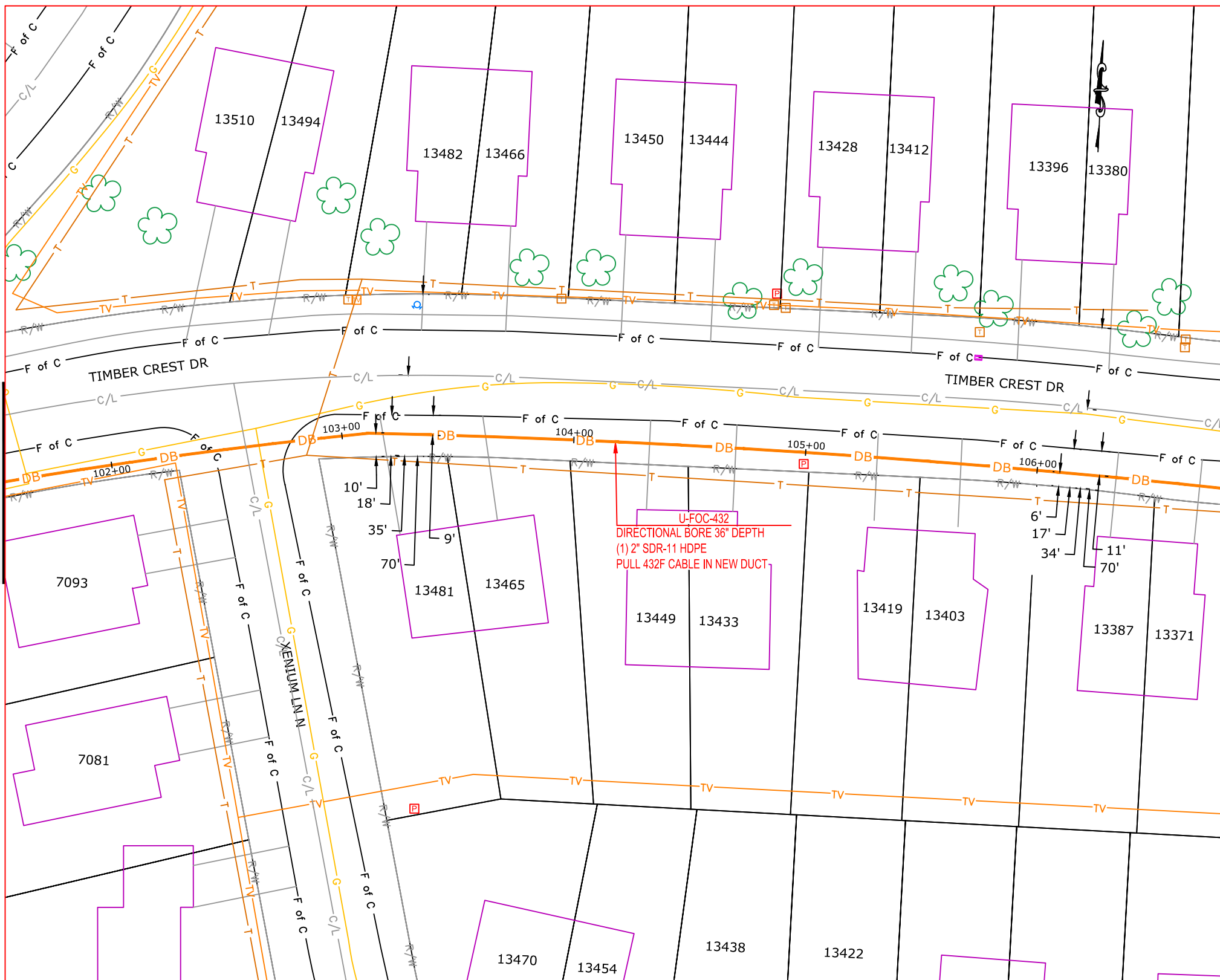
HORIZONTAL: 1"=50'

VERTICAL: 1"=50'

MP TO MP

SHEET 25 OF 32

FILE: 078PINESOL



MATCH TO SHEET 24

MATCH TO SHEET 26

