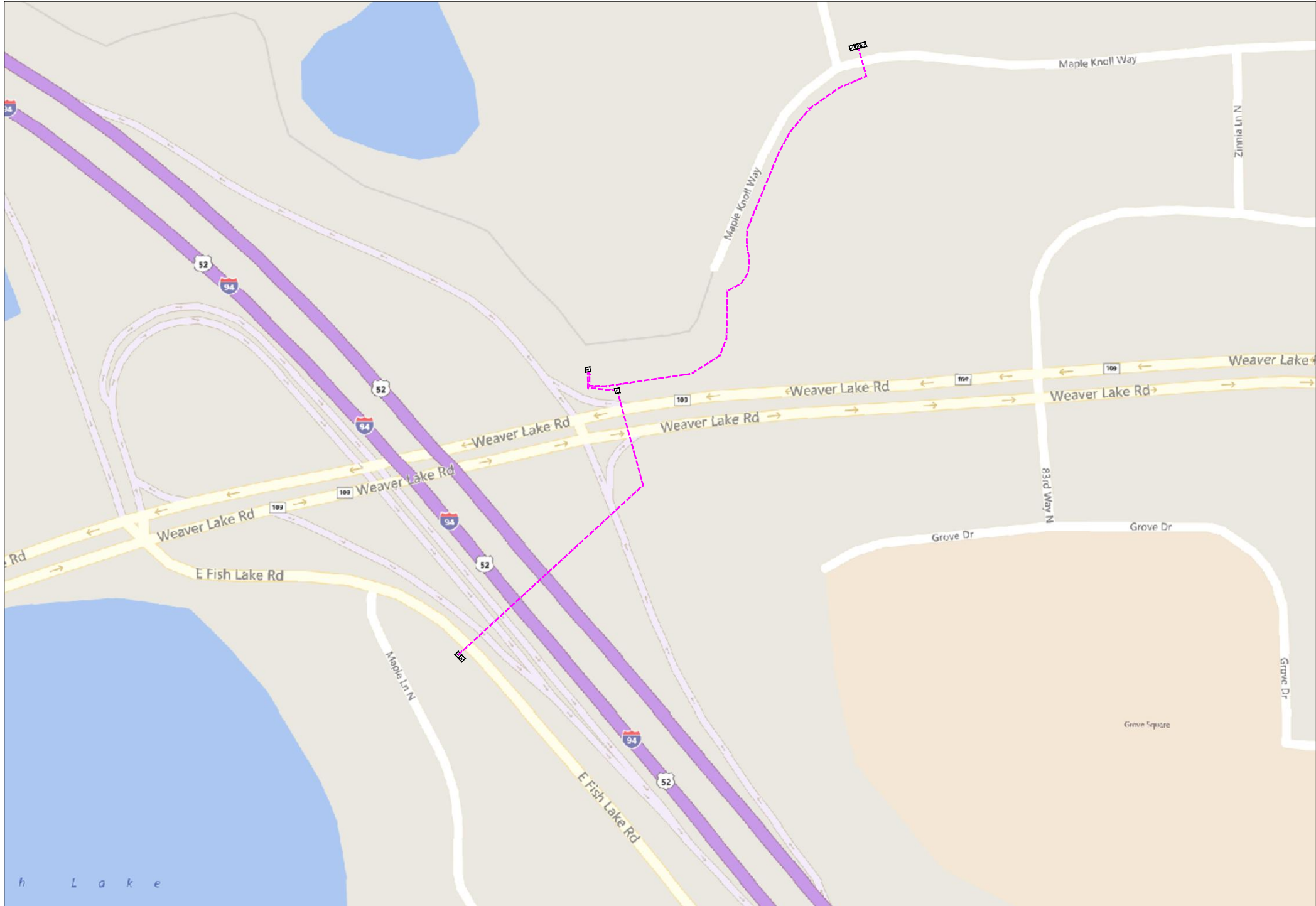


# Fish Lake Overbuild



I-94



1" = -

Route	-
City	Maple Grove, MN
County	Hennepin
Filename	Fish Lake Overbuild
Work Order #	MN009-72



5005 Cheshire Pkwy, Suite 1  
Plymouth, MN 55446

**TRACKING**

Staked By:	-	-
Drafted By:	TJR	5/29/18
Built By:	-	-
As-Built By:	-	-
Revision	Rev #1	-

Construction Totals	
Route Footage	1936
Total Underground	1936
Total Aerial	0
Underground (New)	0
Aerial (New)	0
Overpull (Ex Duct)	1936
Overlash (Ex Strand)	0
Plow	0
Bore	0
New Vaults	0

**GSOC**  
GOPHER STATE ONE CALL  
1-800-252-1116  
www.gopherstateonecall.org

Prepared by:



Perham, MN 218-346-3600  
TrustCompass.com

Overall

# Legend

## Fiber Linetypes

	Proposed Underground Fiber
	Existing Underground Fiber
	Proposed Aerial Fiber
	Existing Aerial Fiber
	Proposed Aerial Strand
	Existing Aerial Strand
	Proposed UG Fiber in Existing Duct
	Proposed Overlash

## Other Utility Linetypes

	Storm Sewer
	Sanitary Sewer
	Gas Line
	Tele./Comm. Line
	Water Line
	Electric Line
	Street light/Traffic signal
	District Cooling
	District Heating
	Force Main
	Other Utility or Unknown

## Abbreviations

CL - Center Line
R/W - Right of Way
BOC - Back of Curb
FOC - Front of Curb
EOR - Edge of Road
S/W - Sidewalk
HH - Handhole
MH - Manhole

## Symbols

	Proposed Handhole
	Existing Handhole
	Manhole
	Proposed Splice Point
	Existing Splice Point
	Power Pole
	Proposed Slack Coil
	Existing Slack Coil
	Proposed Anchor/Down Guy
	Existing Anchor/Down Guy
	Proposed Riser
	Existing Riser
	Aerial Bond
	Aerial Ground
	BM53T - Fiber Marker
	BM53 - Fiber Marker
	Tree
	Street Light
	Proposed PED
	Existing PED

## Construction Totals

Route Footage	1936
Total Underground	1936
Total Aerial	0
Underground (New)	0
Aerial (New)	0
Overpull (Ex Duct)	1936
Overlash (Ex Strand)	0
Plow	0
Bore	0
New Vaults	0

## Fiber

Description	Qty
12 Fiber	0
24 Fiber	0
36 Fiber	0
48 Fiber	0
72 Fiber	0
96 Fiber	0
144 Fiber	2186
288 Fiber	0

## Materials

Description	Qty
Duct (1.25")	0
Vault (24x36x24)	0
Ground Rod	0
Strand	0
Locate Terminal	0



1" = -

Route	-
City	Maple Grove, MN
County	Hennepin
Filename	Fish Lake Overbuild
Work Order #	MN009-72



5005 Cheshire Pkwy, Suite 1  
Plymouth, MN 55446

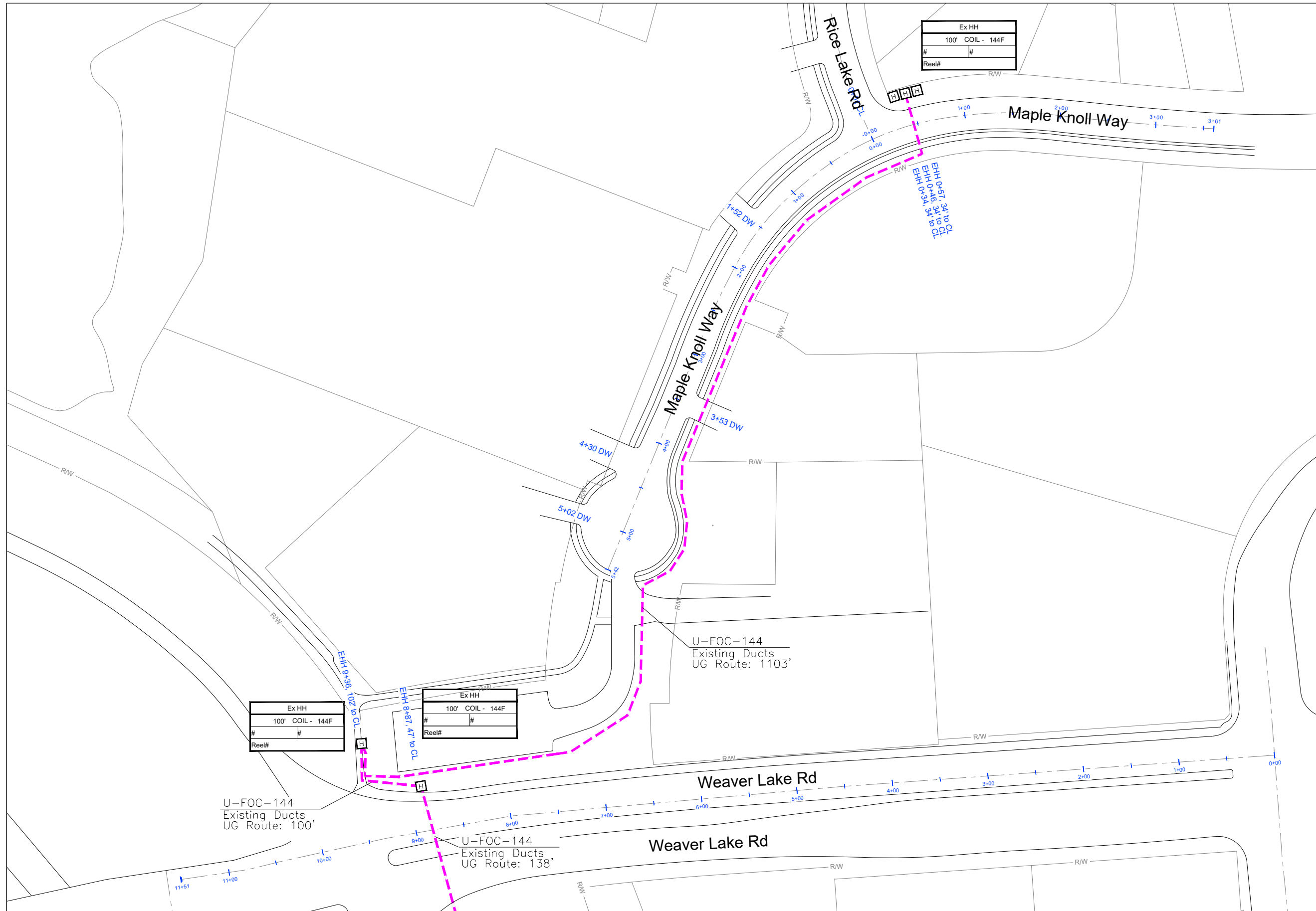
## TRACKING

Staked By:	-
Drafted By:	TJR 5/29/18
Built By:	-
As-Built By:	-
Revision	Rev #1 - -

**GSOC**  
GOPHER STATE ONE CALL  
1-800-252-1116  
www.gopherstateonecall.org

Prepared by:  
 **compass**  
consultants inc.  
Perham, MN 218-346-3600  
TrustCompass.com

Legend



1" = 100'

Route	-
City	Maple Grove, MN
County	Hennepin
Filename	Fish Lake Overbuild
Work Order #	MN009-72

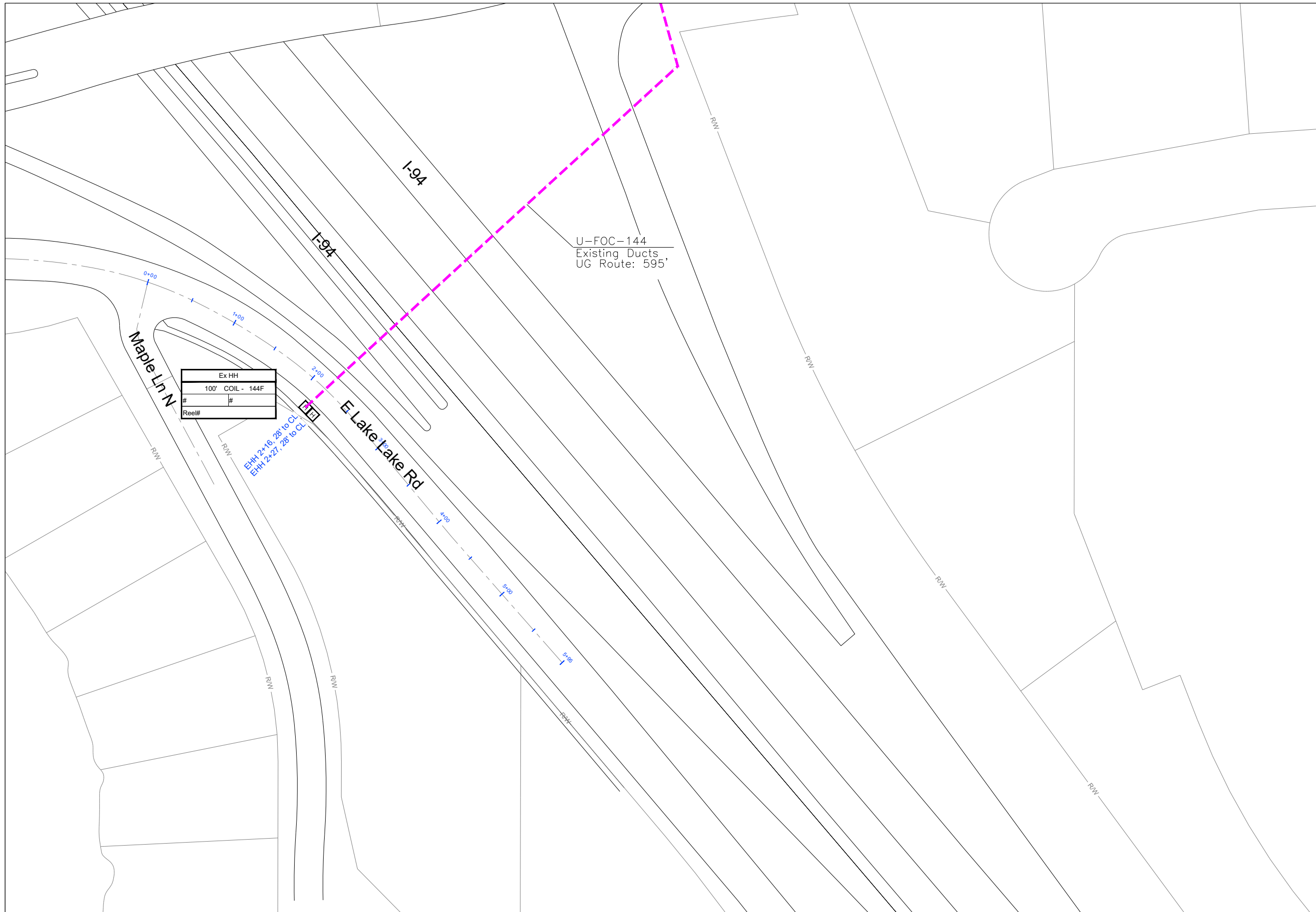


TRACKING	
Staked By:	-
Drafted By:	TJR 5/29/18
Built By:	-
As-Built By:	-
Revision	Rev #1 -

**GSOC**  
GOPHER STATE ONE CALL  
1-800-252-1116  
www.gopherstateonecall.org



MN009 72-01



Ex HH
100' COIL - 144F
#
Reel#

EPH 2+16, 28' 10" CL  
 EPH 2+27, 28' 10" CL

U-FOC-144  
 Existing Ducts  
 UG Route: 595'



1" = 100'

Route	-
City	Maple Grove, MN
County	Hennepin
Filename	Fish Lake Overbuild
Work Order #	MN009-72

**zayo**  
 5005 Cheshire Pkwy, Suite 1  
 Plymouth, MN 55446

**TRACKING**

Staked By:	-
Drafted By:	TJR 5/29/18
Built By:	-
As-Built By:	-
Revision	Rev #1 -

**GSOC**  
 GOPHER STATE ONE CALL  
 1-800-252-1116  
 www.gopherstateonecall.org

Prepared by:  
 **compass**  
 consultants inc.  
 Perham, MN 218-346-3600  
 TrustCompass.com

MN009 72-02