



MCImetro

ACCESS TRANSMISSION SERVICES CORP  
D/B/A VERIZON ACCESS TRANSMISSION  
OUTSIDE PLANT CONSTRUCTION  
FIBER OPTIC CABLE ROUTE

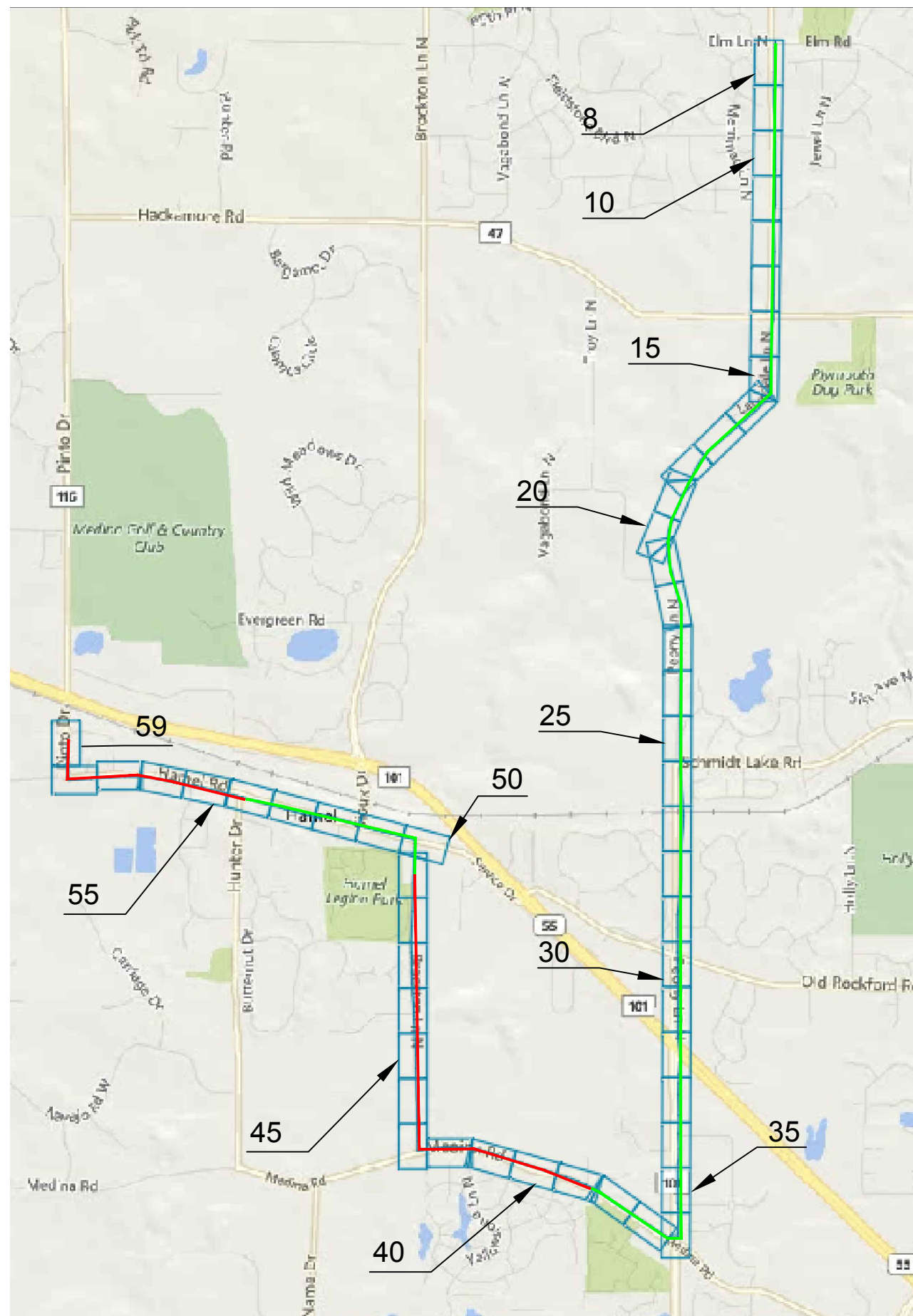
**HAMEL**

SITE CODE: HENNMN

BH06 / GOLDEN VAL-VICKSBURG / 075HAMEL  
HAMEL, MN

PROJECT STATUS: ISSUED FOR PERMITTING  
STATUS DATE: 5/4/18

# LOCATION MAP



PROPOSED BURIED CABLE  
 PROPOSED AERIAL CABLE



PROJECT: 075HAMEL

BH06 / GOLDEN VAL-VICKSBURG

HAMEL, MN

CLARIFICATION NO.	QUANTITY
-------------------	----------

CLARIFICATION NO.	QUANTITY

MCImetro  
 ACCESS TRANSMISSION SERVICES, LLC  
  
 OUTSIDE PLANT CONSTRUCTION  
 TITLE: FIBER OPTIC CABLE ROUTE  
 075HAMEL

DATE: 3/21/18

ENGINEER: NW

DRAWN BY: NW

REVISIONS

DATE	DESCRIPTION	INITIAL
1/28/18	CONST PKG	NW
3/21/18	QC	JEW
4/17/2018	ROUTE TO LIONS HUB	CLM

EXCEPT AS MAY BE OTHERWISE PROVIDED BY CONTRACT, THESE DRAWINGS AND SPECIFICATIONS SHALL REMAIN THE PROPERTY OF MCI COMMUNICATIONS SERVICES, INC., BOTH BEING ISSUED IN STRICT CONFIDENCE AND SHALL NOT BE REPRODUCED, COPIED, OR USED FOR ANY PURPOSE WITHOUT SPECIFIC WRITTEN PERMISSION.

SCALE

HORIZONTAL: NTS  
 VERTICAL: NTS  
 MP \_\_\_\_\_ TO MP \_\_\_\_\_  
 SHEET 3 OF 59

FILE: 075HAMEL.DWG

# SYMBOLS KEY

	EXISTING	PROPOSED
BURIED CABLE	—————	—————
AERIAL CABLE	————— A	————— A
SUBMARINE CABLE	————— SUBM	————— SUBM
FOGWIRE CABLE	————— FOGW	————— FOGW
DIRECT BURIED HDPE	————— H	————— H
PVC OR SPLIT PVC CONDUIT	=====	=====
BSP/GSP OR SPLIT BSP/GSP CONDUIT	[Wavy line pattern]	[Wavy line pattern]
STEEL CASING	[Cross-hatch pattern]	[Cross-hatch pattern]
REMOVE AND RESTORE ASPHALT OR CONCRETE (WIDTH AS INDICATED)	[Double lines with 48" arrow]	[Double lines with 48" arrow]
CORE BORE	[Solid rectangle]	[Dashed rectangle]
JACK AND BORE	[Solid thick bar]	[Solid thick bar]
DIRECTIONAL BORE	[Solid thick bar with DBB]	[Solid thick bar with DBB]
FUTURE CABLE	[Double lines with arrow]	[Double lines with arrow]
REMOVE CABLE	————— R	————— R
TO BE REMOVED OR ABANDONED (SHOWN FOR HDPE)	————— X H	————— X H
AERIAL UTILITY (ELECTRIC)	————— E	————— E
UNDERGROUND UTILITY (TELEPHONE)	————— T	————— T
MAIN TRACKS	—————   ———	—————   ———
AUXILLARY TRACKS	—————     ———	—————     ———
CENTERLINE	————— C/L ———	————— C/L ———
RIGHT-OF-WAY	————— R/W ———	————— R/W ———
EDGE OF PAVEMENT	————— EOP ———	————— EOP ———
SIDEWALK	—————	—————
DITCH LINE	[Wavy line with D/L]	[Wavy line with D/L]
TAX DISTRICT	- - - - -	- - - - -
CITY, COUNTY OR STATE BOUNDARY LINE	• ——— •	• ——— •
PROPERTY LINE	- - - - -	- - - - -
FENCE LINE	x ——— x	x ——— x
GUARDRAIL	I ——— I	I ——— I
TOP OF SLOPE	v v v v v	v v v v v
TOE OF SLOPE	▲ ▲ ▲ ▲ ▲	▲ ▲ ▲ ▲ ▲
FACE OF CURB	————— F of C	————— F of C

STEEL MARKER AND SIGN-(A)  
ALUMINUM "HUB"-STYLE MARKER-(B)  
FLAT MARKER-(C)  
TUBULAR MARKER-(D)  
TUBULAR MARKER, & ISOLATOR PROTECTOR-(E)

MILE POST MARKER  
NOTE:  
DASHED = NOT FOUND IN FIELD

PERMIT TRACKING FORM IDENTIFIER

ROCK PROBE (DEPTH AS INDICATED)

UTILITY COVER DEPTH

HANDHOLE, MANHOLE OR PULLBOX

POLE

ANCHOR ONLY

GUY ONLY

OVERHEAD GUY (ARROW IN DIRECTION OF PULL)

ANCHOR AND GUY

SIDEWALK ANCHOR AND GUY

FOREIGN ANCHOR AND GUY

PUSH BRACE (EXISTING POLE)

ACCOUNT CODE CHANGE (BURIED TO AERIAL)

BOND AND GROUND

CULVERT (SIZE AS INDICATED)

BRIDGE

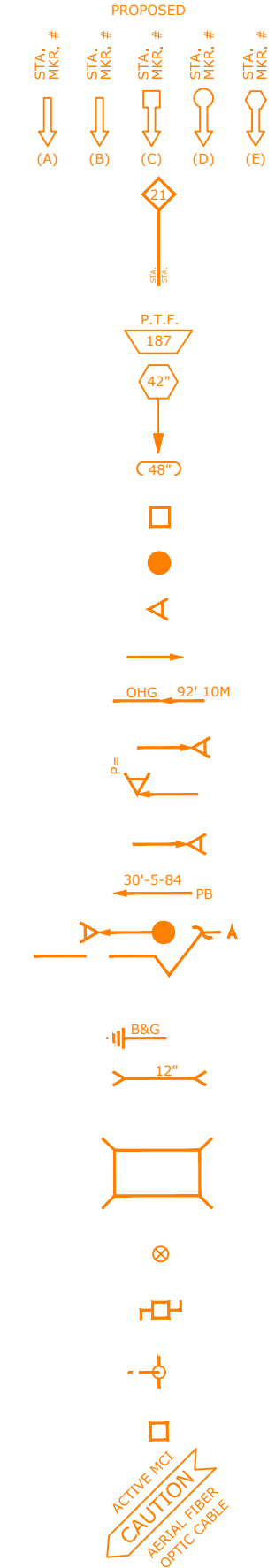
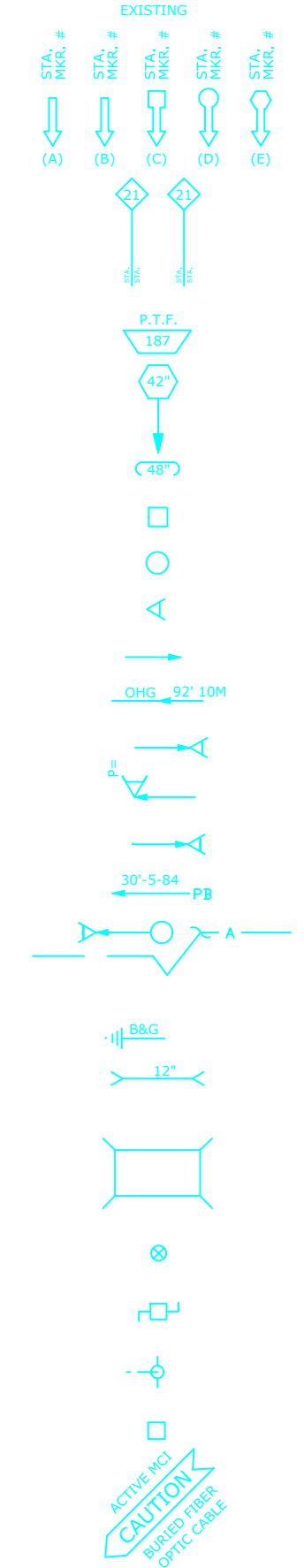
WATER METER

GAS VALVE

FIRE HYDRANT

RAILROAD SIGNAL CONTROL BOX

CAUTION NOTE



PROJECT: 075HAMEL  
BH06 / GOLDEN VAL-VICKSBURG  
HAMEL, MN

CLARIFICATION NO.	QUANTITY

MCI metro  
ACCESS TRANSMISSION SERVICES, LLC  
**MCI**  
OUTSIDE PLANT CONSTRUCTION  
TITLE: FIBER OPTIC CABLE ROUTE  
075HAMEL

DATE: 3/21/18  
ENGINEER: NW  
DRAWN BY: NW

DATE	DESCRIPTION	INITIAL
1/28/18	CONST PKG	NW
3/21/18	QC	JEW
4/17/2018	ROUTE TO LIONS HUB	CLM

EXCEPT AS MAY BE OTHERWISE PROVIDED BY CONTRACT, THESE DRAWINGS AND SPECIFICATIONS SHALL REMAIN THE PROPERTY OF MCI COMMUNICATIONS SERVICES, INC., BOTH BEING ISSUED IN STRICT CONFIDENCE AND SHALL NOT BE REPRODUCED, COPIED, OR USED FOR ANY PURPOSE WITHOUT SPECIFIC WRITTEN PERMISSION.

SCALE  
HORIZONTAL: NTS  
VERTICAL: NTS  
MP \_\_\_\_ TO MP \_\_\_\_  
SHEET 6 OF 59  
FILE: 075HAMEL.DWG



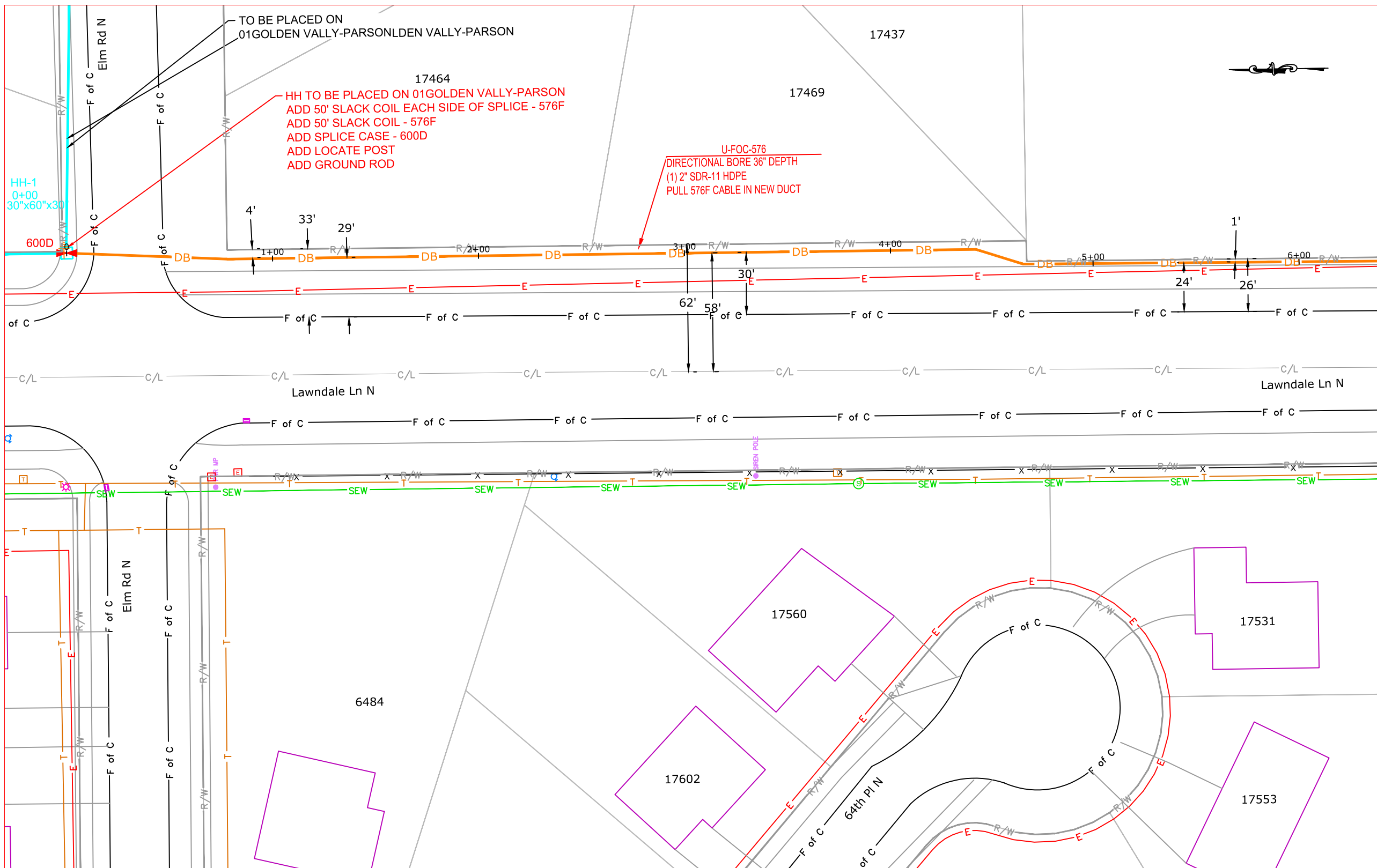
PROJECT: 075HAMEL

BH06 / GOLDEN VALLY-VISCKSBURG

MAPLE GROVE, MN

CLARIFICATION NO. QUANTITY

CLARIFICATION NO.	QUANTITY



MATCH TO SHEET 9

MCI  
ACCESS TRANSMISSION SERVICES, LLC  
OUTSIDE PLANT CONSTRUCTION  
TITLE: FIBER OPTIC CABLE ROUTE  
075HAMEL

DATE: 3/28/18

ENGINEER: NW

DRAWN BY: NW

REVISIONS

DATE	DESCRIPTION	INITIAL
2/7/18	CONST PKG	NW
3/28/18	QC	SJH
4/17/2018	ROUTE TO LIONS HUB	CLM

EXCEPT AS MAY BE OTHERWISE PROVIDED BY CONTRACT, THESE DRAWINGS AND SPECIFICATIONS SHALL REMAIN THE PROPERTY OF MCI COMMUNICATIONS SERVICES, INC., BOTH BEING ISSUED IN STRICT CONFIDENCE AND SHALL NOT BE REPRODUCED, COPIED, OR USED FOR ANY PURPOSE WITHOUT SPECIFIC WRITTEN PERMISSION.

SCALE  
HORIZONTAL: 1"=50'  
VERTICAL: 1"=50'  
MP TO MP  
SHEET 8 OF 59  
FILE: 075HAMEL

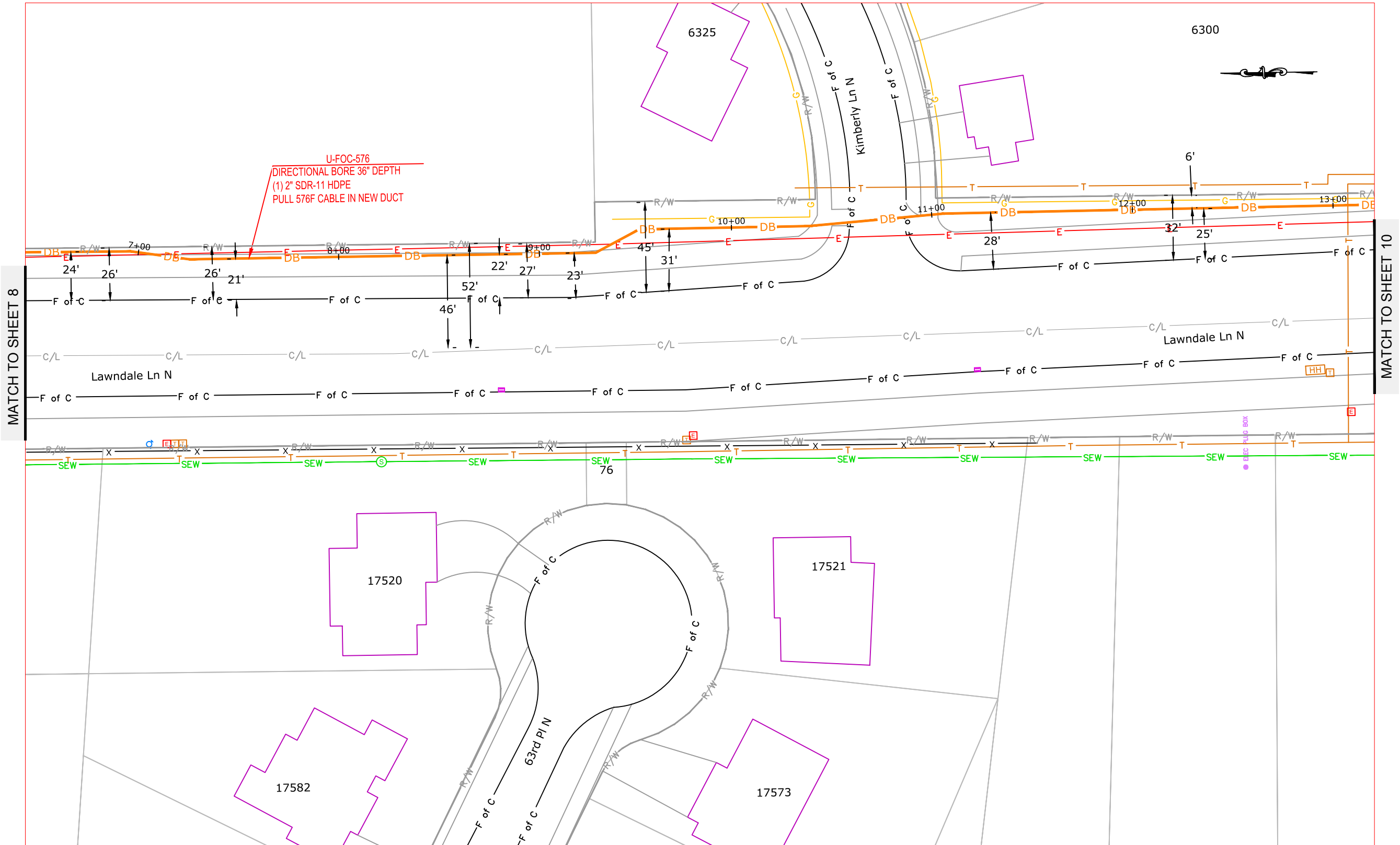


PROJECT: 075HAMEL

BH06 / GOLDEN VALLY-VISCKSBURG

MAPLE GROVE, MN

CLARIFICATION NO.	QUANTITY
-------------------	----------



MATCH TO SHEET 8

MATCH TO SHEET 10

MCImetro  
 ACCESS TRANSMISSION SERVICES, LLC  
  
 OUTSIDE PLANT CONSTRUCTION  
 TITLE: FIBER OPTIC CABLE ROUTE  
 075HAMEL

DATE: 3/28/18

ENGINEER: NW

DRAWN BY: NW

REVISIONS

DATE	DESCRIPTION	INITIAL
2/7/18	CONST PKG	NW
3/28/18	QC	SJH
4/17/2018	ROUTE TO LIONS HUB	CLM

EXCEPT AS MAY BE OTHERWISE PROVIDED BY CONTRACT, THESE DRAWINGS AND SPECIFICATIONS SHALL REMAIN THE PROPERTY OF MCI COMMUNICATIONS SERVICES, INC., BOTH BEING ISSUED IN STRICT CONFIDENCE AND SHALL NOT BE REPRODUCED, COPIED, OR USED FOR ANY PURPOSE WITHOUT SPECIFIC WRITTEN PERMISSION.

SCALE

HORIZONTAL: 1"=50'

VERTICAL: 1"=50'

MP \_\_\_\_\_ TO MP \_\_\_\_\_

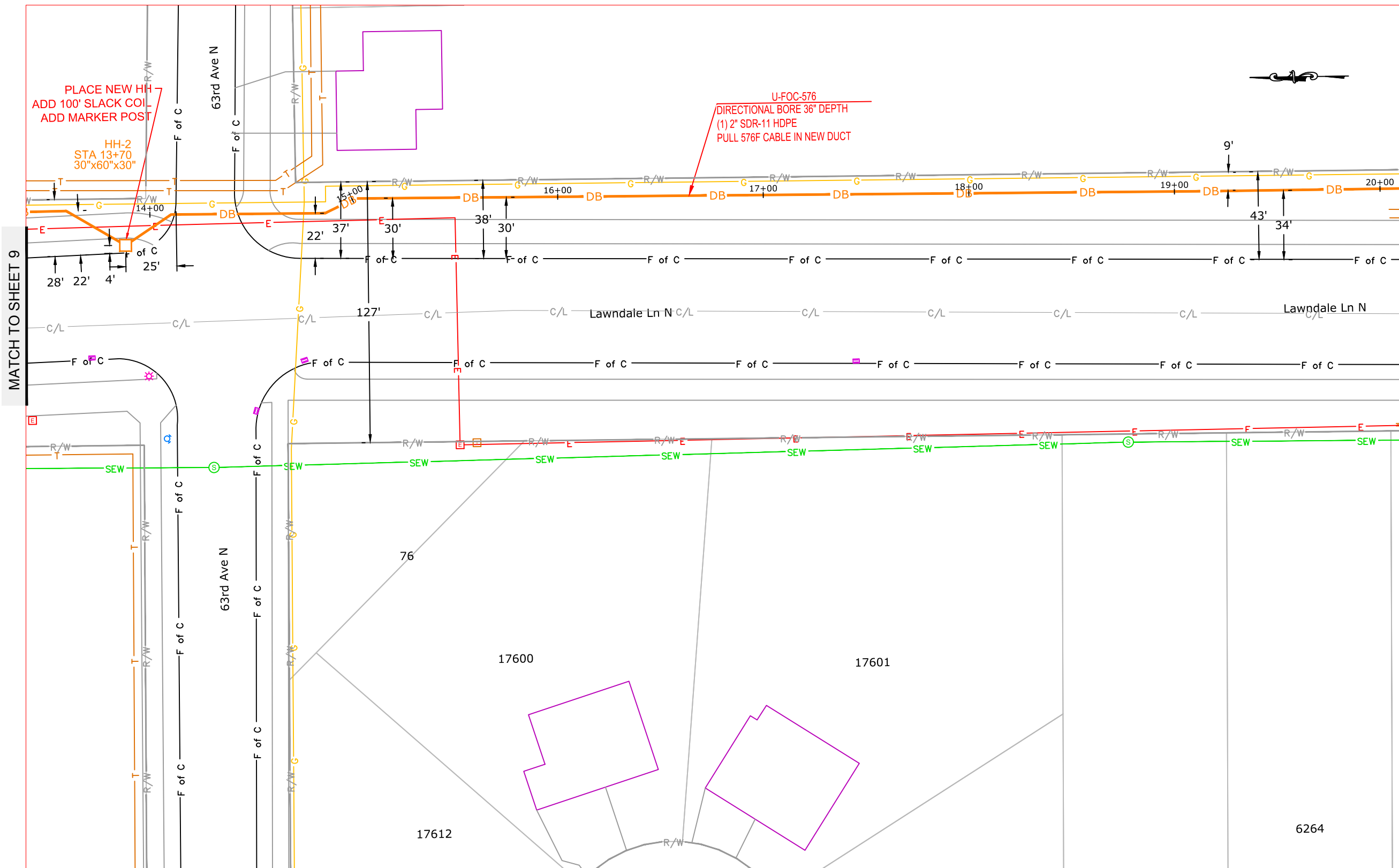
SHEET **9** OF **59**

FILE: 075HAMEL



**PROJECT:** 075HAMEL  
BH06 / GOLDEN VALLY-VISCKSBURG  
MAPLE GROVE, MN

CLARIFICATION NO.	QUANTITY



MATCH TO SHEET 11

MCI metro  
ACCESS TRANSMISSION SERVICES, LLC  
OUTSIDE PLANT CONSTRUCTION  
TITLE: FIBER OPTIC CABLE ROUTE  
075HAMEL

**DATE:** 3/28/18  
**ENGINEER:** NW  
**DRAWN BY:** NW

REVISIONS		
DATE	DESCRIPTION	INITIAL
2/7/18	CONST PKG	NW
3/28/18	QC	SJH
4/17/2018	ROUTE TO LIONS HUB	CLM

EXCEPT AS MAY BE OTHERWISE PROVIDED BY CONTRACT, THESE DRAWINGS AND SPECIFICATIONS SHALL REMAIN THE PROPERTY OF MCI COMMUNICATIONS SERVICES, INC., BOTH BEING ISSUED IN STRICT CONFIDENCE AND SHALL NOT BE REPRODUCED, COPIED, OR USED FOR ANY PURPOSE WITHOUT SPECIFIC WRITTEN PERMISSION.

**SCALE**  
**HORIZONTAL:** 1"=50'  
**VERTICAL:** 1"=50'

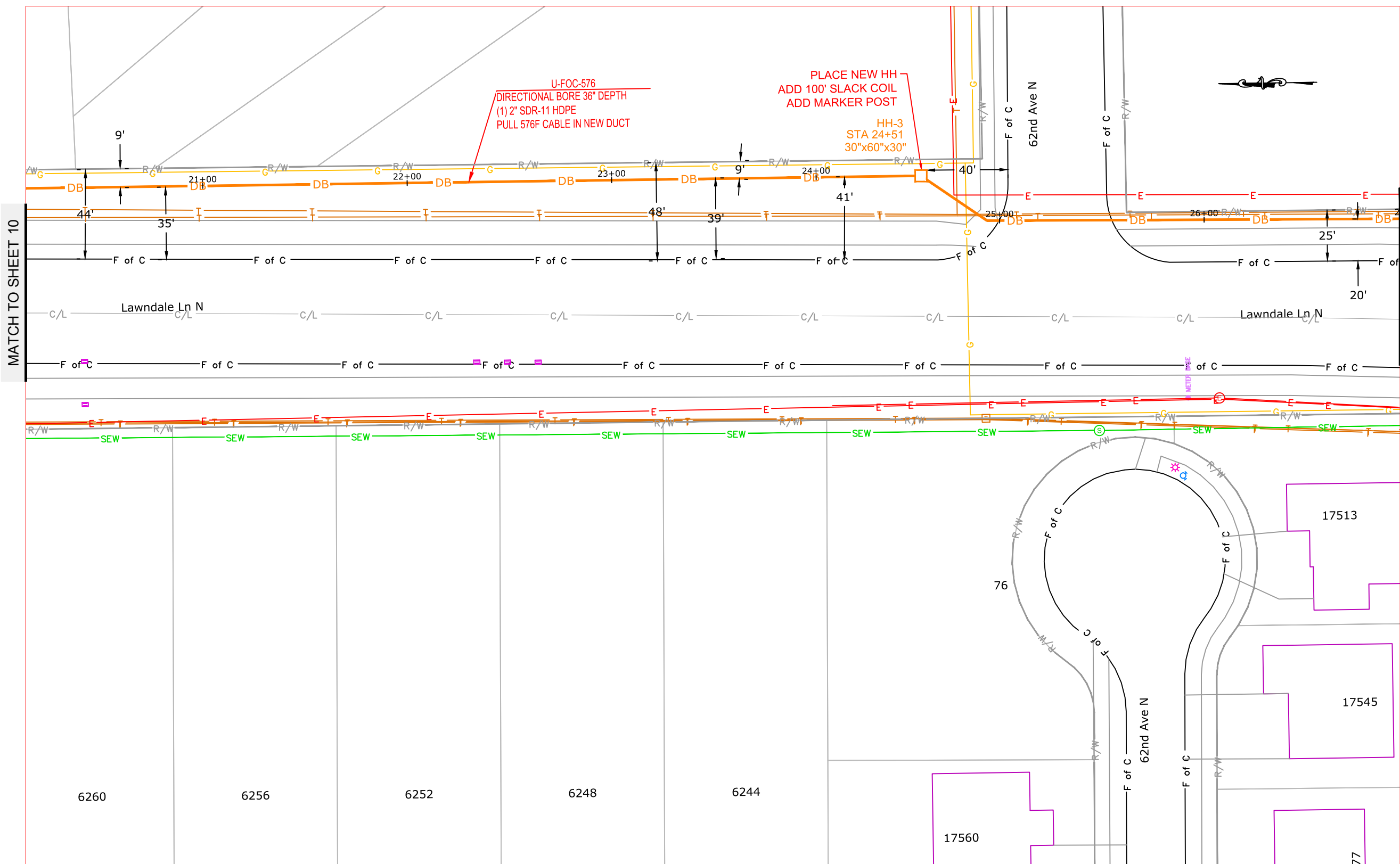
MP TO MP  
**SHEET** 10 **OF** 59  
**FILE:** 075HAMEL





**PROJECT:** 075HAMEL  
 BH06 / GOLDEN VALLEY-VISCKSBURG  
 MAPLE GROVE, MN

CLARIFICATION NO.	QUANTITY



MATCH TO SHEET 10

MATCH TO SHEET 12

MCImetro  
 ACCESS TRANSMISSION SERVICES, LLC  
**MCI**  
 OUTSIDE PLANT CONSTRUCTION  
 TITLE: FIBER OPTIC CABLE ROUTE  
 075HAMEL

**DATE:** 3/28/18  
**ENGINEER:** NW  
**DRAWN BY:** NW

REVISIONS		
DATE	DESCRIPTION	INITIAL
2/7/18	CONST PKG	NW
3/28/18	QC	SJH
4/17/2018	ROUTE TO LIONS HUB	CLM

EXCEPT AS MAY BE OTHERWISE PROVIDED BY CONTRACT,  
 THESE DRAWINGS AND SPECIFICATIONS SHALL REMAIN  
 THE PROPERTY OF MCI COMMUNICATIONS SERVICES, INC.,  
 BOTH BEING ISSUED IN STRICT CONFIDENCE AND SHALL  
 NOT BE REPRODUCED, COPIED, OR USED FOR ANY PURPOSE  
 WITHOUT SPECIFIC WRITTEN PERMISSION.

**SCALE**  
**HORIZONTAL:** 1"=50'  
**VERTICAL:** 1"=50'  
 MP \_\_\_\_\_ TO MP \_\_\_\_\_  
**SHEET 11 OF 59**  
**FILE:** 075HAMEL

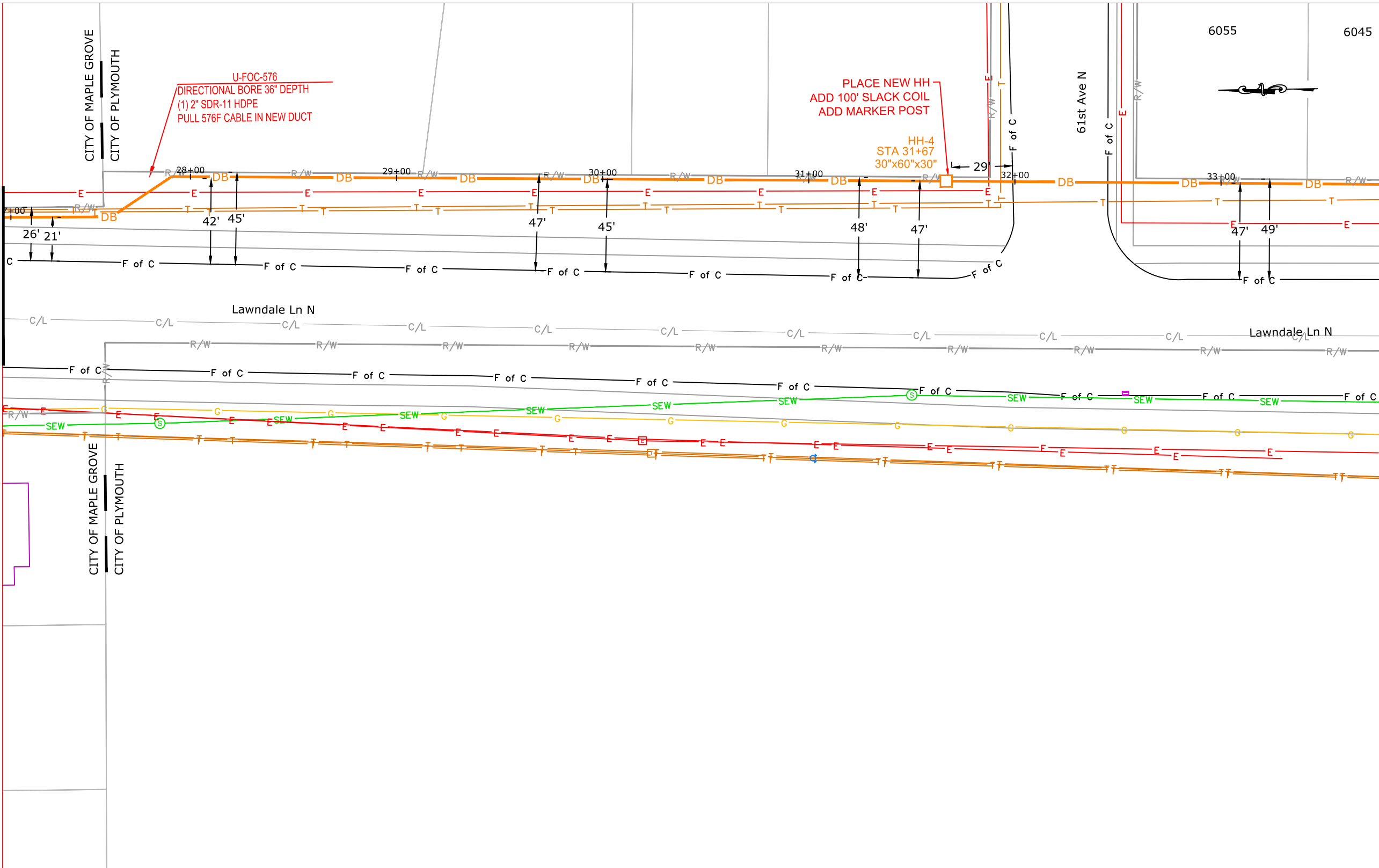
PROJECT: 075HAMEL

BH06 / GOLDEN VALLEY-VISCKSBURG

MAPLE GROVE, MN

CLARIFICATION NO. QUANTITY

CLARIFICATION NO.	QUANTITY



MATCH TO SHEET 11

MATCH TO SHEET 13

MCI  
ACCESS TRANSMISSION SERVICES, LLC  
OUTSIDE PLANT CONSTRUCTION  
TITLE: FIBER OPTIC CABLE ROUTE  
075HAMEL

DATE: 3/28/18

ENGINEER: NW

DRAWN BY: NW

**REVISIONS**

DATE	DESCRIPTION	INITIAL
2/7/18	CONST PKG	NW
3/28/18	QC	SJH
4/17/2018	ROUTE TO LIONS HUB	CLM

EXCEPT AS MAY BE OTHERWISE PROVIDED BY CONTRACT, THESE DRAWINGS AND SPECIFICATIONS SHALL REMAIN THE PROPERTY OF MCI COMMUNICATIONS SERVICES, INC., BOTH BEING ISSUED IN STRICT CONFIDENCE AND SHALL NOT BE REPRODUCED, COPIED, OR USED FOR ANY PURPOSE WITHOUT SPECIFIC WRITTEN PERMISSION.

**SCALE**  
HORIZONTAL: 1"=50'  
VERTICAL: 1"=50'  
MP \_\_\_\_\_ TO MP \_\_\_\_\_  
SHEET 12 OF 59  
FILE: 075HAMEL