



MCI metro

ACCESS TRANSMISSION SERVICES CORP  
D/B/A VERIZON ACCESS TRANSMISSION  
OUTSIDE PLANT CONSTRUCTION  
FIBER OPTIC CABLE ROUTE

## ARBOR LAKES

SITE CODE: HENNMN

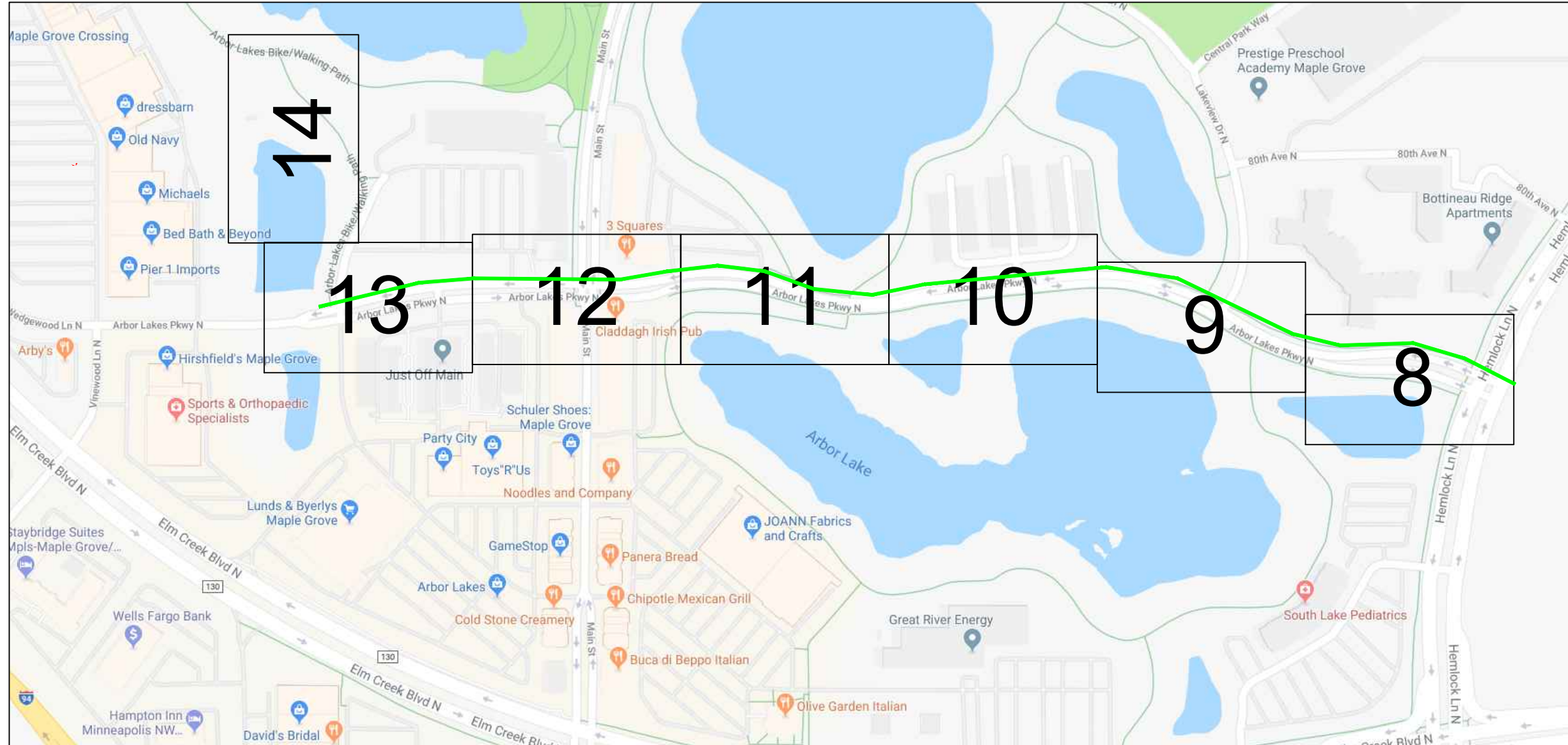
BH03 / ISOTOPE-ALEXANDER / 031ARBOR LAKES  
MAPLE GROVE, MN

PROJECT STATUS: ISSUED FOR PERMITTING  
STATUS DATE: 3/23/18

# LOCATION MAP

PROPOSED BURIED CABLE

PROPOSED AERIAL CABLE



PROJECT: 031ARBOR LAKES

BH03 / ISOTOPE-ALEXANDER

MAPLE GROVE, MN

CLARIFICATION NO.	QUANTITY

CLARIFICATION NO.	QUANTITY

MCI  
 ACCESS TRANSMISSION SERVICES, LLC  
 OUTSIDE PLANT CONSTRUCTION  
 TITLE: FIBER OPTIC CABLE ROUTE  
 031ARBOR LAKES

DATE: 3/23/18

ENGINEER: NW

DRAWN BY: NW

REVISIONS

DATE	DESCRIPTION	INITIAL
2/11/18	CONST PKG	NW
3/23/18	QC	SJH
3/29/18	REV 6	JEW

EXCEPT AS MAY BE OTHERWISE PROVIDED BY CONTRACT, THESE DRAWINGS AND SPECIFICATIONS SHALL REMAIN THE PROPERTY OF MCI COMMUNICATIONS SERVICES, INC., BOTH BEING ISSUED IN STRICT CONFIDENCE AND SHALL NOT BE REPRODUCED, COPIED, OR USED FOR ANY PURPOSE WITHOUT SPECIFIC WRITTEN PERMISSION.

SCALE

HORIZONTAL: NTS

VERTICAL: NTS

MP \_\_\_\_\_ TO MP \_\_\_\_\_

SHEET 3 OF 14

FILE: 031ARBOR LAKES.DWG





PROJECT: 031ARBOR LAKES

BH03 / ISOTOPE-ALEXANDER

MAPLE GROVE, MN

CLARIFICATION NO. QUANTITY

CLARIFICATION NO.	QUANTITY

MCImetro  
ACCESS TRANSMISSION SERVICES, LLC  
OUTSIDE PLANT CONSTRUCTION  
TITLE: FIBER OPTIC CABLE ROUTE  
031ARBOR LAKES

DATE: 3/23/18

ENGINEER: NW

DRAWN BY: NW

REVISIONS

DATE	DESCRIPTION	INITIAL
2/11/18	CONST PKG	NW
3/23/18	QC	SJH
3/29/18	REV 6	JEV

EXCEPT AS MAY BE OTHERWISE PROVIDED BY CONTRACT, THESE DRAWINGS AND SPECIFICATIONS SHALL REMAIN THE PROPERTY OF MCI COMMUNICATIONS SERVICES, INC., BOTH BEING ISSUED IN STRICT CONFIDENCE AND SHALL NOT BE REPRODUCED, COPIED, OR USED FOR ANY PURPOSE WITHOUT SPECIFIC WRITTEN PERMISSION.

SCALE

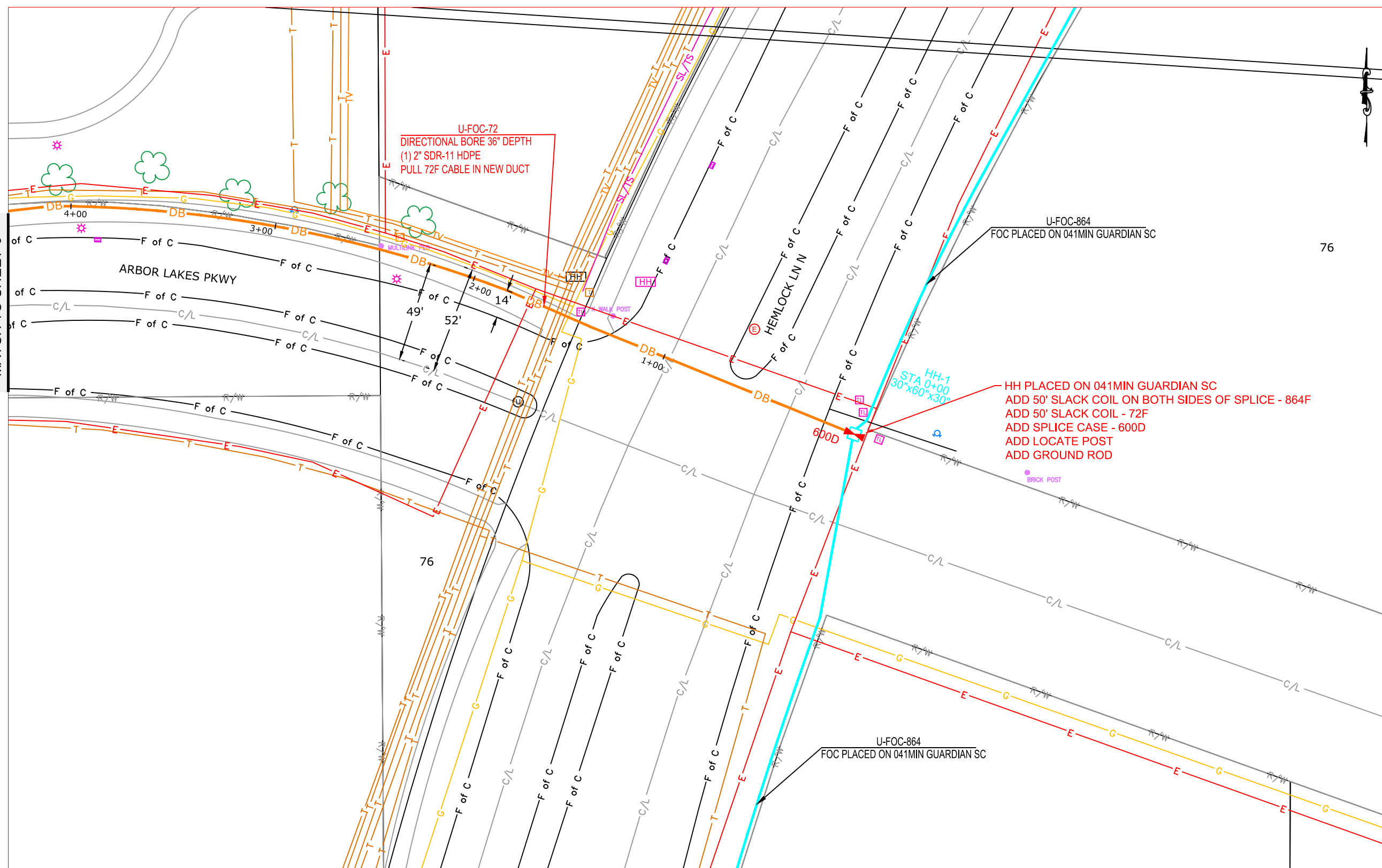
HORIZONTAL: 1"=50'

VERTICAL: 1"=50'

MP TO MP

SHEET 8 OF 14

FILE: 031ARBOR LAKES



MATCH TO SHEET 9



**PROJECT:** 031ARBOR LAKES

BH03 / ISOTOPE-ALEXANDER

MAPLE GROVE, MN

**CLARIFICATION NO.** **QUANTITY**

CLARIFICATION NO.	QUANTITY

MCI  
 ACCESS TRANSMISSION SERVICES, LLC  
**MCI**  
 OUTSIDE PLANT CONSTRUCTION  
 TITLE: FIBER OPTIC CABLE ROUTE  
 031ARBOR LAKES

**DATE:** 3/23/18

**ENGINEER:** NW

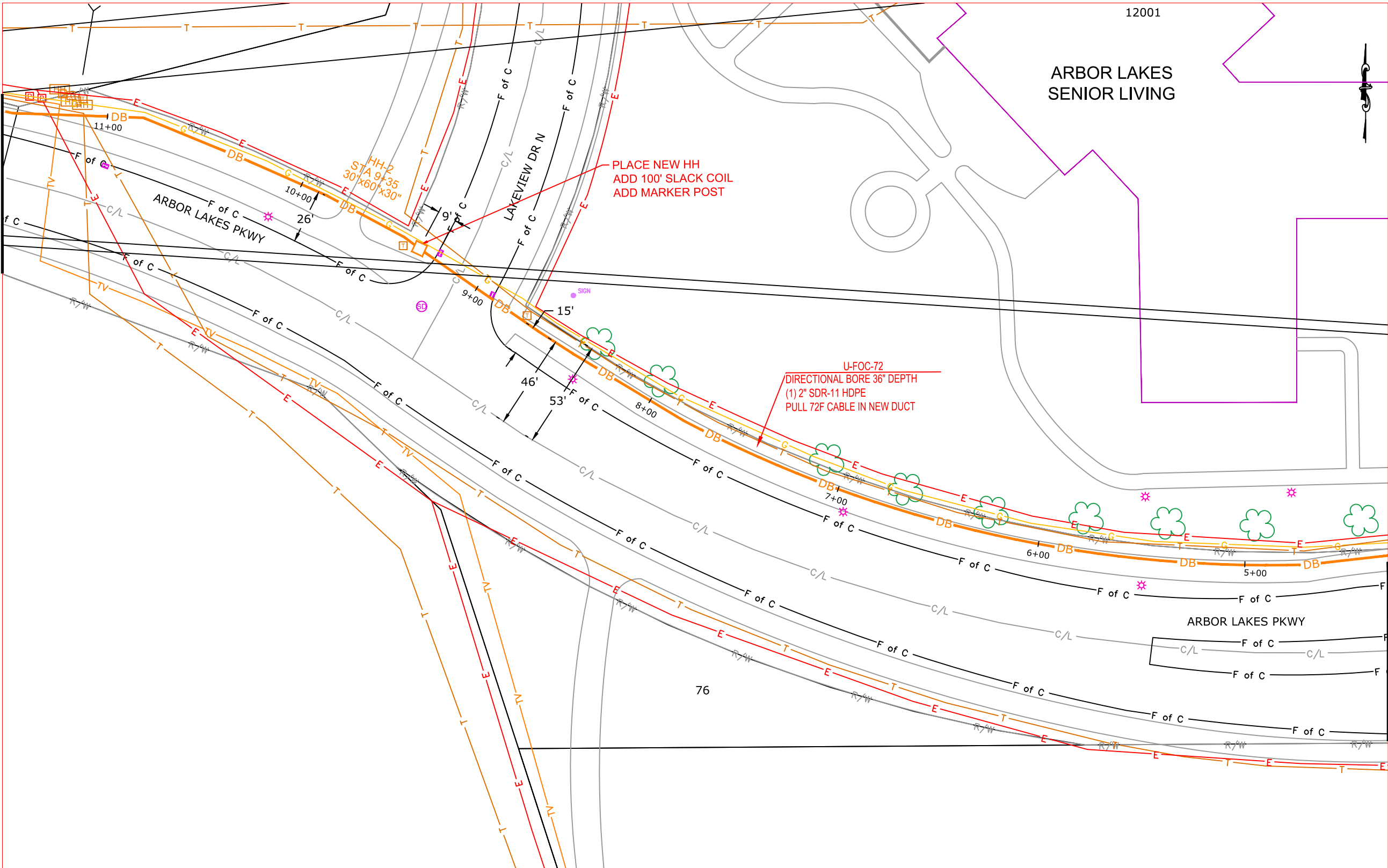
**DRAWN BY:** NW

REVISIONS		
DATE	DESCRIPTION	INITIAL
2/11/18	CONST PKG	NW
3/23/18	QC	SJH
3/29/18	REV 6	JEW

EXCEPT AS MAY BE OTHERWISE PROVIDED BY CONTRACT, THESE DRAWINGS AND SPECIFICATIONS SHALL REMAIN THE PROPERTY OF MCI COMMUNICATIONS SERVICES, INC., BOTH BEING ISSUED IN STRICT CONFIDENCE AND SHALL NOT BE REPRODUCED, COPIED, OR USED FOR ANY PURPOSE WITHOUT SPECIFIC WRITTEN PERMISSION.

**SCALE**  
**HORIZONTAL:** 1"=50'  
**VERTICAL:** 1"=50'

MP \_\_\_\_\_ TO MP \_\_\_\_\_  
**SHEET** 9 **OF** 14  
**FILE:** 031ARBOR LAKES



MATCH TO SHEET 10

MATCH TO SHEET 8



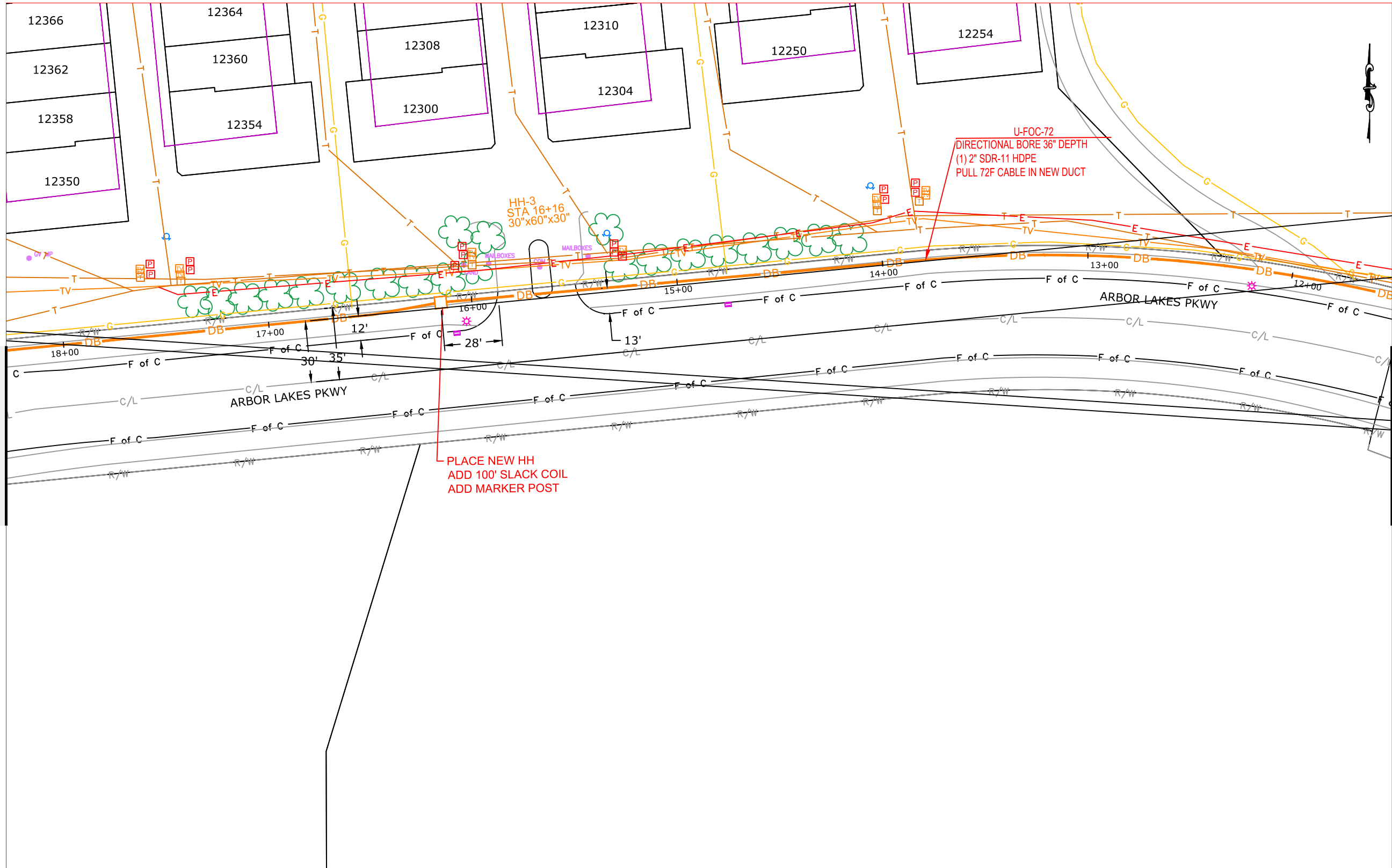
PROJECT: 031ARBOR LAKES

BH03 / ISOTOPE-ALEXANDER

MAPLE GROVE, MN

CLARIFICATION NO. QUANTITY

CLARIFICATION NO.	QUANTITY



MCI  
 ACCESS TRANSMISSION SERVICES, LLC  
 OUTSIDE PLANT CONSTRUCTION  
 TITLE: FIBER OPTIC CABLE ROUTE  
 031ARBOR LAKES

DATE: 3/23/18

ENGINEER: NW

DRAWN BY: NW

REVISIONS

DATE	DESCRIPTION	INITIAL
2/11/18	CONST PKG	NW
3/23/18	QC	SJH
3/29/18	REV 6	JEW

EXCEPT AS MAY BE OTHERWISE PROVIDED BY CONTRACT, THESE DRAWINGS AND SPECIFICATIONS SHALL REMAIN THE PROPERTY OF MCI COMMUNICATIONS SERVICES, INC., BOTH BEING ISSUED IN STRICT CONFIDENCE AND SHALL NOT BE REPRODUCED, COPIED, OR USED FOR ANY PURPOSE WITHOUT SPECIFIC WRITTEN PERMISSION.

SCALE

HORIZONTAL: 1"=50'

VERTICAL: 1"=50'

MP \_\_\_\_\_ TO MP \_\_\_\_\_

SHEET 10 OF 14

FILE: 031ARBOR LAKES



PROJECT: 031ARBOR LAKES

BH03 / ISOTOPE-ALEXANDER

MAPLE GROVE, MN

CLARIFICATION NO.	QUANTITY

MCImetro  
ACCESS TRANSMISSION SERVICES, LLC

OUTSIDE PLANT CONSTRUCTION  
TITLE: FIBER OPTIC CABLE ROUTE  
031ARBOR LAKES

DATE: 3/23/18

ENGINEER: NW

DRAWN BY: NW

REVISIONS

DATE	DESCRIPTION	INITIAL
2/11/18	CONST PKG	NW
3/23/18	QC	SJH
3/29/18	REV 6	JEV

EXCEPT AS MAY BE OTHERWISE PROVIDED BY CONTRACT, THESE DRAWINGS AND SPECIFICATIONS SHALL REMAIN THE PROPERTY OF MCI COMMUNICATIONS SERVICES, INC., BOTH BEING ISSUED IN STRICT CONFIDENCE AND SHALL NOT BE REPRODUCED, COPIED, OR USED FOR ANY PURPOSE WITHOUT SPECIFIC WRITTEN PERMISSION.

SCALE

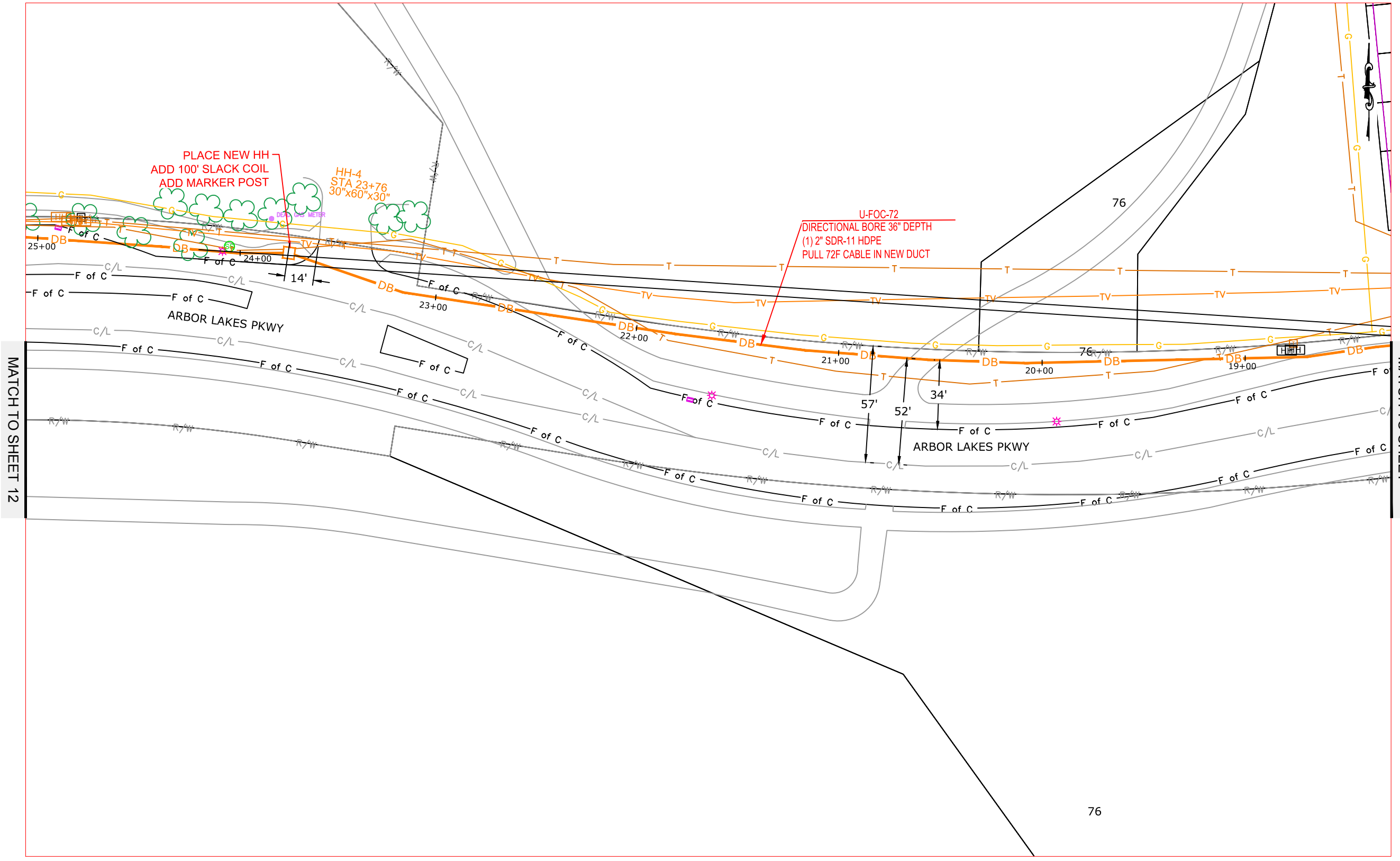
HORIZONTAL: 1"=50'

VERTICAL: 1"=50'

MP TO MP

SHEET 11 OF 14

FILE: 031ARBOR LAKES



MATCH TO SHEET 12

MATCH TO SHEET 10

76



**PROJECT:** 031ARBOR LAKES  
 BH03 / ISOTOPE-ALEXANDER  
 MAPLE GROVE, MN

CLARIFICATION NO.	QUANTITY

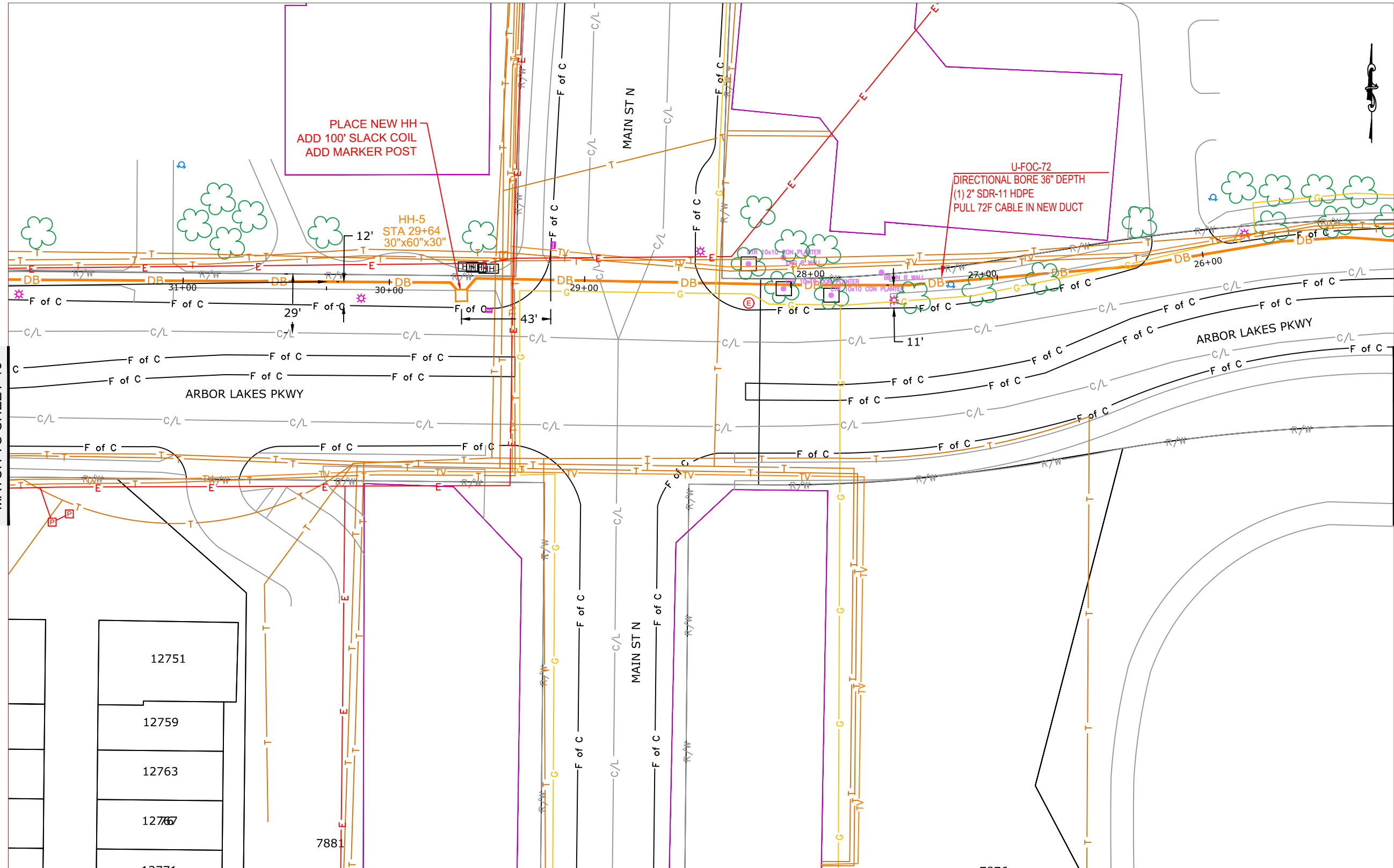
MCImetro  
 ACCESS TRANSMISSION SERVICES, LLC  
**MCI**  
 OUTSIDE PLANT CONSTRUCTION  
 TITLE: FIBER OPTIC CABLE ROUTE  
 031ARBOR LAKES

DATE: 3/23/18  
 ENGINEER: NW  
 DRAWN BY: NW

REVISIONS		
DATE	DESCRIPTION	INITIAL
2/11/18	CONST PKG	NW
3/23/18	QC	SJH
3/29/18	REV 6	JEW

EXCEPT AS MAY BE OTHERWISE PROVIDED BY CONTRACT, THESE DRAWINGS AND SPECIFICATIONS SHALL REMAIN THE PROPERTY OF MCI COMMUNICATIONS SERVICES, INC., BOTH BEING ISSUED IN STRICT CONFIDENCE AND SHALL NOT BE REPRODUCED, COPIED, OR USED FOR ANY PURPOSE WITHOUT SPECIFIC WRITTEN PERMISSION.

**SCALE**  
 HORIZONTAL: 1"=50'  
 VERTICAL: 1"=50'  
 MP \_\_\_\_\_ TO MP \_\_\_\_\_  
**SHEET 12 OF 14**  
 FILE: 031ARBOR LAKES



MATCH TO SHEET 13

MATCH TO SHEET 11

12751

12759

12763

12767

7881





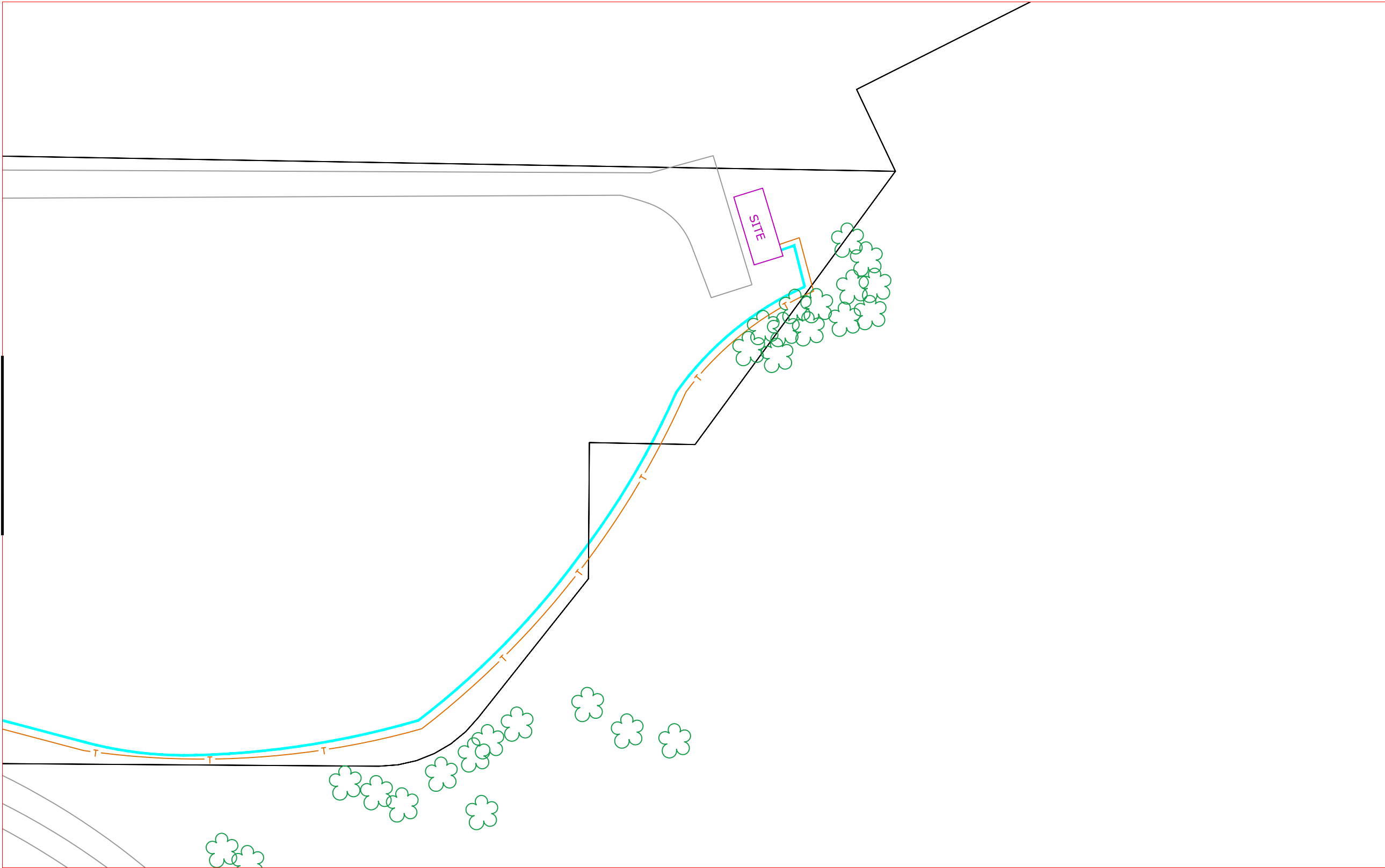


**PROJECT:** 031ARBOR LAKES

BH03 / ISOTOPE-ALEXANDER

MAPLE GROVE, MN

CLARIFICATION NO.	QUANTITY



MCImetro  
ACCESS TRANSMISSION SERVICES, LLC



OUTSIDE PLANT CONSTRUCTION

TITLE: FIBER OPTIC CABLE ROUTE  
031ARBOR LAKES

**DATE:** 3/23/18

**ENGINEER:** NW

**DRAWN BY:** NW

**REVISIONS**

DATE	DESCRIPTION	INITIAL
2/11/18	CONST PKG	NW
3/23/18	QC	SJH
3/29/18	REV 6	JEW

EXCEPT AS MAY BE OTHERWISE PROVIDED BY CONTRACT, THESE DRAWINGS AND SPECIFICATIONS SHALL REMAIN THE PROPERTY OF MCI COMMUNICATIONS SERVICES, INC., BOTH BEING ISSUED IN STRICT CONFIDENCE AND SHALL NOT BE REPRODUCED, COPIED, OR USED FOR ANY PURPOSE WITHOUT SPECIFIC WRITTEN PERMISSION.

**SCALE**

**HORIZONTAL:** 1"=50'

**VERTICAL:** 1"=50'

MP \_\_\_\_\_ TO MP \_\_\_\_\_

**SHEET** 14 **OF** 14

**FILE:** 031ARBOR LAKES