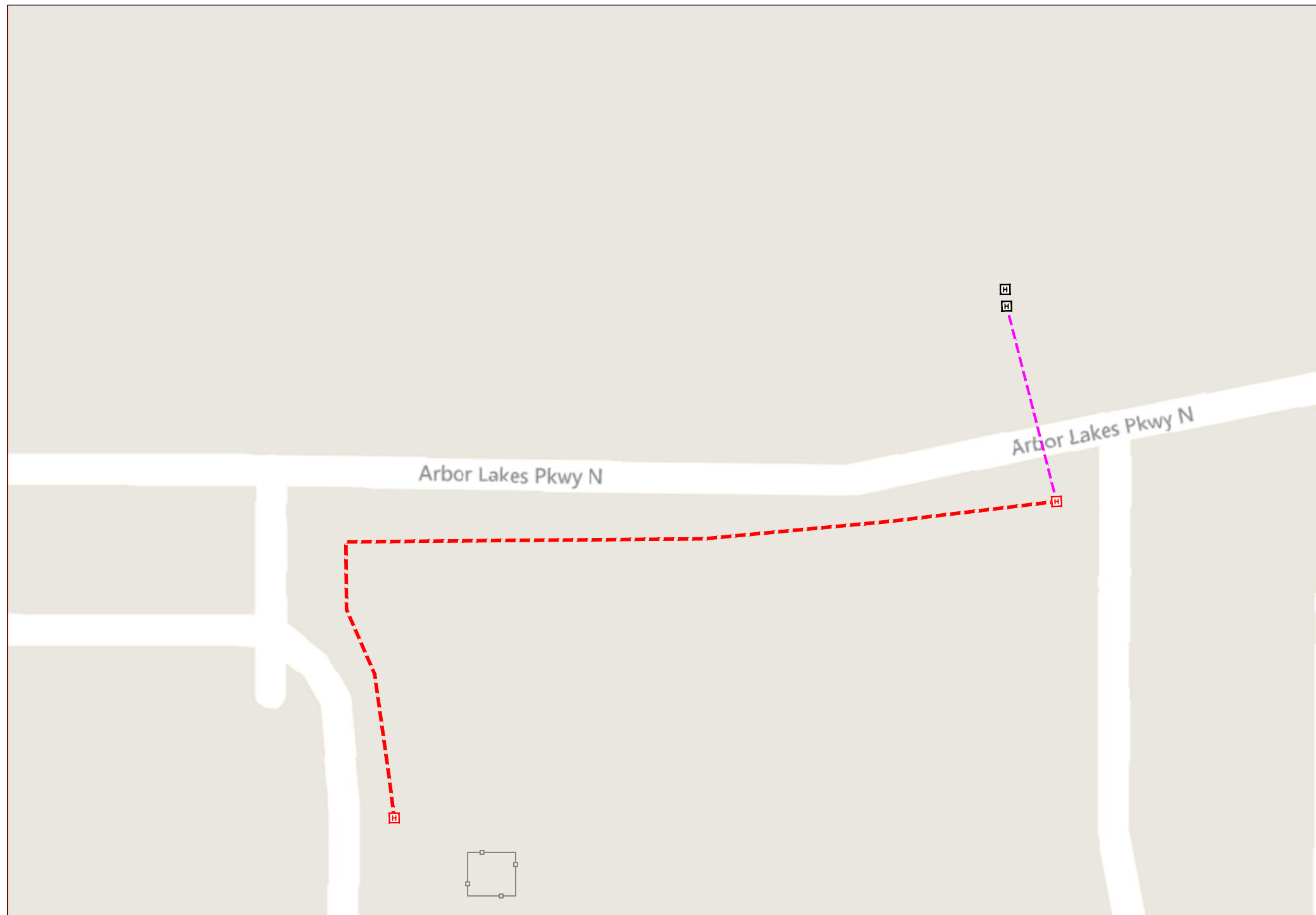


MS60XC380



Arbor Lakes Pkwy N



1" = -

Route	-
City	Maple Grove, MN
County	Hennepin
Filename	MS60XC380 Maple Grove
Work Order #	#MS60XC380



5005 Cheshire Pkwy, Suite 1
Plymouth, MN 55446

TRACKING

Staked By:	-
Drafted By:	TJR 2/20/18
Built By:	-
As-Built By:	-
Revision	Rev #1

Construction Totals	
Route Footage	624
Total Underground	624
Total Aerial	0
Underground (New)	519
Aerial (New)	0
Overpull (Ex Duct)	105
Overlash (Ex Strand)	0
Plow	0
Bore	519
New Vaults	2

GSOC
GOPHER STATE ONE CALL
1-800-252-1116
www.gopherstateonecall.org

Prepared by:
 compass consultants inc.
Perham, MN 218-346-3600
TrustCompass.com

Overall

Legend

Fiber Linetypes

	Proposed Underground Fiber
	Existing Underground Fiber
	Proposed Aerial Fiber
	Existing Aerial Fiber
	Proposed Aerial Strand
	Existing Aerial Strand
	Proposed UG Fiber in Existing Duct
	Proposed Overlash

Other Utility Linetypes

	Storm Sewer
	Sanitary Sewer
	Gas Line
	Tele./Comm. Line
	Water Line
	Electric Line
	Street light/Traffic signal
	District Cooling
	District Heating
	Force Main
	Other Utility or Unknown

Abbreviations

CL - Center Line
R/W - Right of Way
BOC - Back of Curb
FOC - Front of Curb
EOR - Edge of Road
S/W - Sidewalk
HH - Handhole
MH - Manhole

Symbols

	Proposed Handhole
	Existing Handhole
	Manhole
	Proposed Splice Point
	Existing Splice Point
	Power Pole
	Proposed Slack Coil
	Existing Slack Coil
	Proposed Anchor/Down Guy
	Existing Anchor/Down Guy
	Proposed Riser
	Existing Riser
	Aerial Bond
	Aerial Ground
	BM53T - Fiber Marker
	BM53 - Fiber Marker
	Tree
	Street Light
	Proposed PED
	Existing PED

Construction Totals

Route Footage	624
Total Underground	624
Total Aerial	0
Underground (New)	519
Aerial (New)	0
Overpull (Ex Duct)	105
Overlash (Ex Strand)	0
Plow	0
Bore	519
New Vaults	2

Fiber

Description	Qty
12 Fiber	0
24 Fiber	0
36 Fiber	0
48 Fiber	824
72 Fiber	0
96 Fiber	0
144 Fiber	0
288 Fiber	0

Materials

Description	Qty
Duct (1.25")	1038
Vault (24x36x24)	2
Ground Rod	2
Strand	0
Locate Terminal	2



1" = -

Route	-
City	Maple Grove, MN
County	Hennepin
Filename	MS60XC380 Maple Grove
Work Order #	#MS60XC380



5005 Cheshire Pkwy, Suite 1
Plymouth, MN 55446

TRACKING

Staked By:	-
Drafted By:	TJR 2/20/18
Built By:	-
As-Built By:	-
Revision	Rev #1

GSOC

GOPHER STATE ONE CALL
1-800-252-1116
www.gopherstateonecall.org

Prepared by:



Legend



1" = 50'

Route
-

City
Maple Grove, MN

County
Hennepin

Filename
MS60XC380 Maple Grove

Work Order #
#MS60XC380



5005 Cheshire Pkwy, Suite 1
Plymouth, MN 55446

TRACKING

Staked By:
-

Drafted By:
TJR 2/20/18

Built By:
-

As-Built By:
-

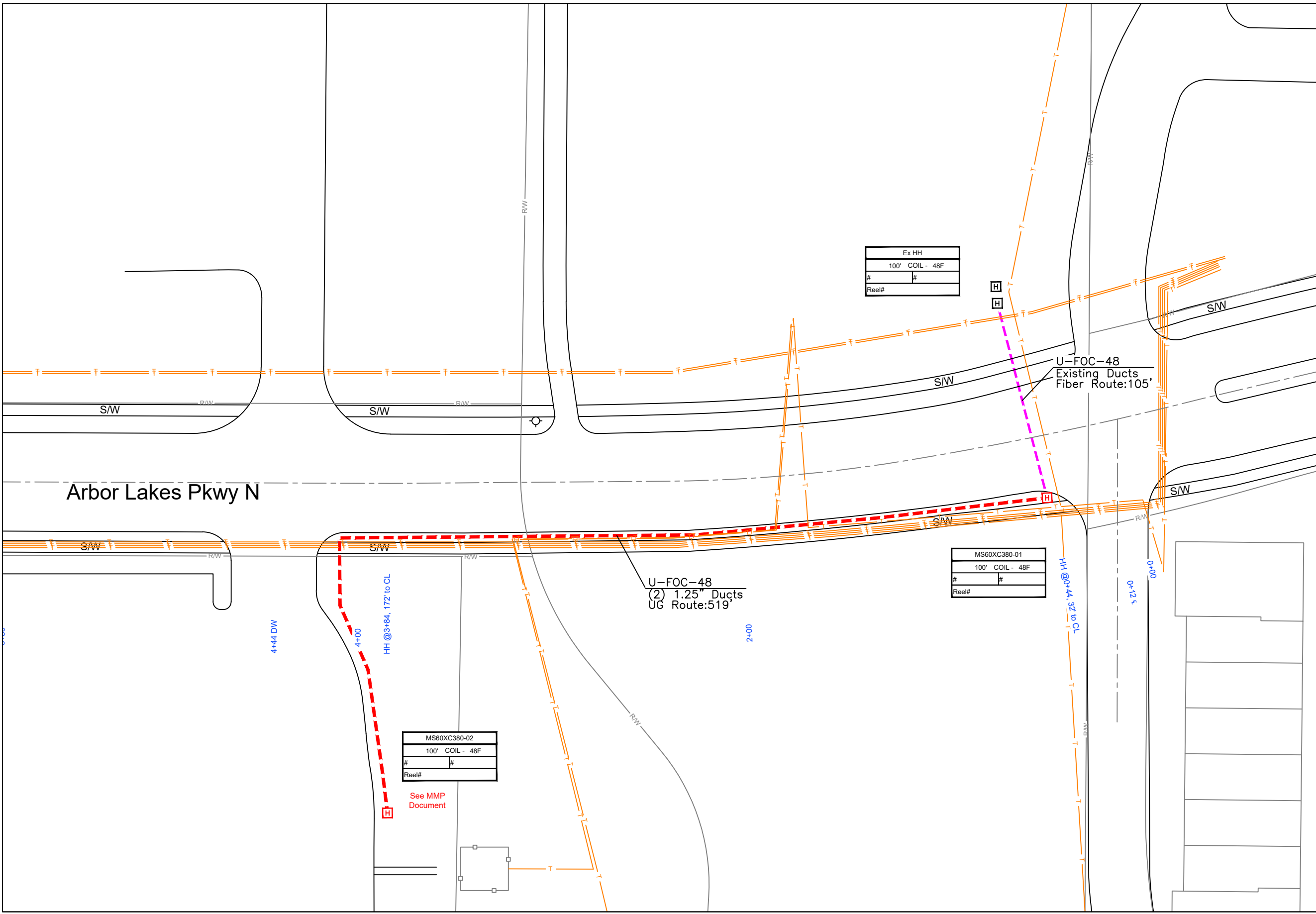
Revision
Rev #1

GSOC

GOPHER STATE ONE CALL
1-800-252-1116
www.gopherstateonecall.org

Prepared by:
 compass consultants inc.
Perham, MN 218-346-3600
TrustCompass.com

MS60XC380-01



Ex HH
100' COIL - 48F
#
Reel#

MS60XC380-01
100' COIL - 48F
#
Reel#

MS60XC380-02
100' COIL - 48F
#
Reel#

See MMP Document