



MCImetro  
ACCESS TRANSMISSION SERVICES CORP  
D/B/A VERIZON ACCESS TRANSMISSION  
OUTSIDE PLANT CONSTRUCTION  
FIBER OPTIC CABLE ROUTE

**OSSEO**

SITE CODE: HENNMN  
BH03 / ISOTOPE TO ALEXANDER / 043OSSEO  
OSSEO, MN

PROJECT STATUS: ISSUED FOR CONSTRUCTION  
STATUS DATE: 5/16/2018

# LOCATION MAP

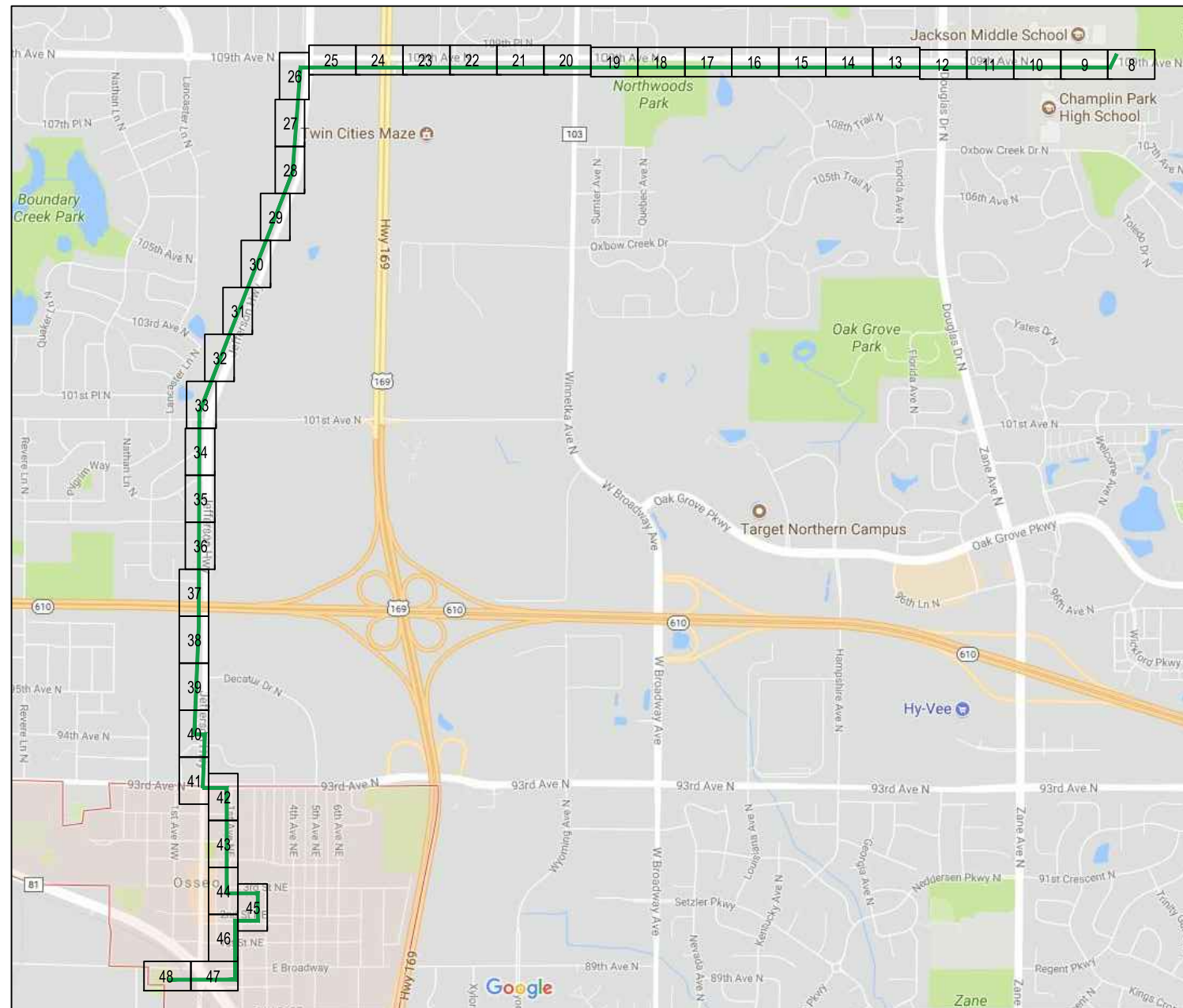


PROJECT: 043OSSEO

BH03 / ISOTOPE-ALEXANDER

OSSEO, MN

CLARIFICATION NO.	QUANTITY
-------------------	----------



MCImetro  
 ACCESS TRANSMISSION SERVICES, LLC  
**MCI**  
 OUTSIDE PLANT CONSTRUCTION  
 TITLE: FIBER OPTIC CABLE ROUTE  
 043OSSEO

DATE: 01/9/18

ENGINEER: DC

DRAWN BY: MD

**REVISIONS**

DATE	DESCRIPTION	INITIAL
1/19/18	Construction PKG	DC
1/22/18	QC	SJH

EXCEPT AS MAY BE OTHERWISE PROVIDED BY CONTRACT, THESE DRAWINGS AND SPECIFICATIONS SHALL REMAIN THE PROPERTY OF MCI COMMUNICATIONS SERVICES, INC. BOTH BEING ISSUED IN STRICT CONFIDENCE AND SHALL NOT BE REPRODUCED, COPIED, OR USED FOR ANY PURPOSE WITHOUT SPECIFIC WRITTEN PERMISSION.

**SCALE**

HORIZONTAL: NTS

VERTICAL: NTS

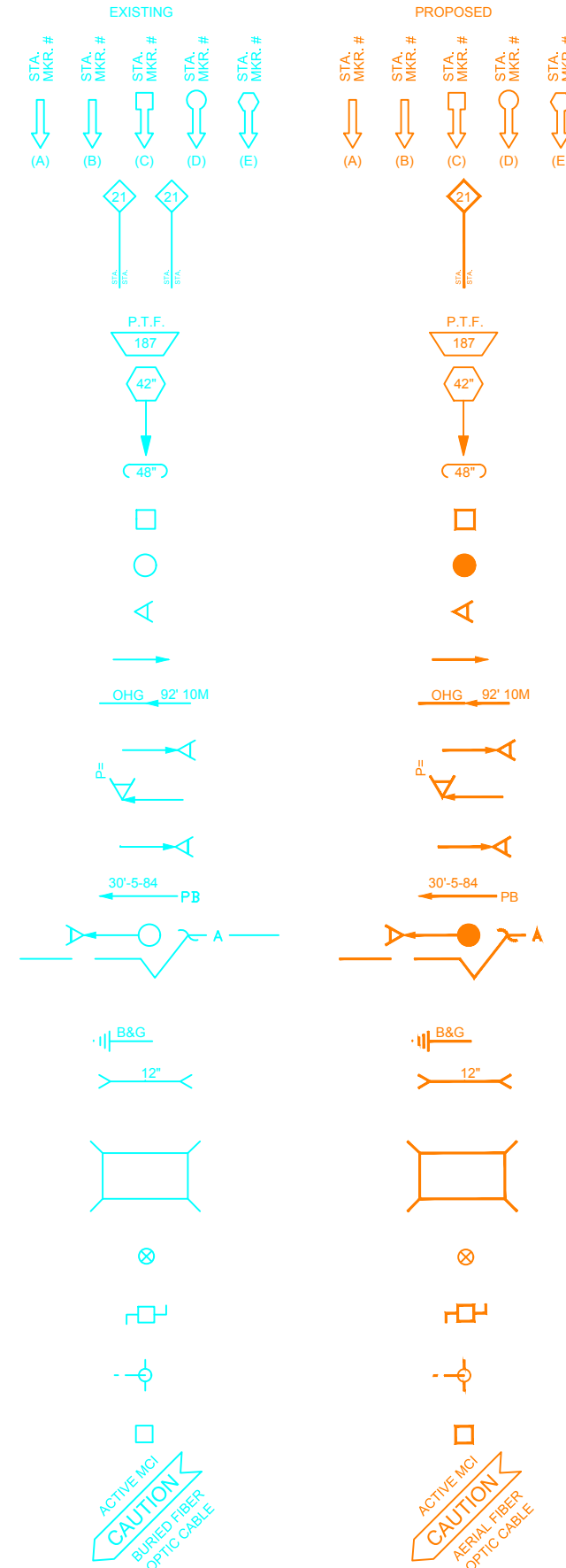
MP TO MP

SHEET 3 OF 48

FILE: 043MIN OSSEO.DWG

# SYMBOLS KEY

	EXISTING	PROPOSED	
BURIED CABLE	—	—	STEEL MARKER AND SIGN-(A)
AERIAL CABLE	— A —	— A —	ALUMINUM "HUB"-STYLE MARKER-(B)
SUBMARINE CABLE	— SUBM —	— SUBM —	FLAT MARKER-(C)
FOGWIRE CABLE	— FOGW —	— FOGW —	TUBULAR MARKER-(D)
DIRECT BURIED HDPE	— H —	— H —	TUBULAR MARKER, & ISOLATOR PROTECTOR-(E)
PVC OR SPLIT PVC CONDUIT	—	—	MILE POST MARKER
BSP/GSP OR SPLIT BSP/GSP CONDUIT	—	—	NOTE: DASHED = NOT FOUND IN FIELD
STEEL CASING	—	—	PERMIT TRACKING FORM IDENTIFIER
REMOVE AND RESTORE ASPHALT OR CONCRETE (WIDTH AS INDICATED)	— 48" —	— 48" —	ROCK PROBE (DEPTH AS INDICATED)
CORE BORE	—	—	UTILITY COVER DEPTH
JACK AND BORE	—	—	HANDHOLE, MANHOLE OR PULLBOX
DIRECTIONAL BORE	— DB —	— DB —	POLE
FUTURE CABLE	—	—	ANCHOR ONLY
REMOVE CABLE	— R —	— R —	GUY ONLY
TO BE REMOVED OR ABANDONED (SHOWN FOR HDPE)	— X —	— X —	OVERHEAD GUY (ARROW IN DIRECTION OF PULL)
AERIAL UTILITY (ELECTRIC)	— E —	— E —	ANCHOR AND GUY
UNDERGROUND UTILITY (TELEPHONE)	— T —	— T —	SIDEWALK ANCHOR AND GUY
MAIN TRACKS	—	—	FOREIGN ANCHOR AND GUY
AUXILIARY TRACKS	—	—	PUSH BRACE (EXISTING POLE)
CENTERLINE	— C/L —	— C/L —	ACCOUNT CODE CHANGE (BURIED TO AERIAL)
RIGHT-OF-WAY	— R/W —	— R/W —	BOND AND GROUND
EDGE OF PAVEMENT	— EOP —	— EOP —	CULVERT (SIZE AS INDICATED)
SIDEWALK	— S/W —	— S/W —	BRIDGE
DITCH LINE	— D/L —	— D/L —	WATER METER
TAX DISTRICT	—	—	GAS VALVE
CITY, COUNTY OR STATE BOUNDARY LINE	—	—	FIRE HYDRANT
PROPERTY LINE	—	—	RAILROAD SIGNAL CONTROL BOX
FENCE LINE	— F/L —	— F/L —	CAUTION NOTE
GUARDRAIL	—	—	
TOP OF SLOPE	—	—	
TOE OF SLOPE	—	—	



PROJECT: 0430SSEO

BH03 / ISOTOPE-ALEXANDER

OSSEO, MN

CLARIFICATION NO.	QUANTITY

MCImetro  
 ACCESS TRANSMISSION SERVICES, LLC  
  
 OUTSIDE PLANT CONSTRUCTION  
 TITLE: FIBER OPTIC CABLE ROUTE  
 0430SSEO

DATE: 01/9/18

ENGINEER: DC

DRAWN BY: MD

REVISIONS		
DATE	DESCRIPTION	INITIAL
1/19/18	Construction PKG	DC
1/22/18	QC	SJH

EXCEPT AS MAY BE OTHERWISE PROVIDED BY CONTRACT, THESE DRAWINGS AND SPECIFICATIONS SHALL REMAIN THE PROPERTY OF MCI COMMUNICATIONS SERVICES, INC. BOTH BEING ISSUED IN STRICT CONFIDENCE AND SHALL NOT BE REPRODUCED, COPIED, OR USED FOR ANY PURPOSE WITHOUT SPECIFIC WRITTEN PERMISSION.

SCALE

HORIZONTAL: NTS

VERTICAL: NTS

MP \_\_\_\_ TO MP \_\_\_\_

SHEET 6 OF 48

FILE: 043MIN OSSEO.DWG

THE SUBSURFACE UTILITY INFORMATION IN THIS PLAN IS UTILITY QUALITY LEVEL D. THIS UTILITY QUALITY LEVEL WAS DETERMINED ACCORDING TO THE GUIDELINES OF CI/ASCE 38-02, ENTITLED STANDARD GUIDELINES FOR THE COLLECTION AND DEPICTION OF EXISTING SUBSURFACE UTILITY DATA. IT SHALL BE THE CONTRACTORS RESPONSIBILITY TO UTILIZE THE GOPHER STATE ONE CALL EXCAVATION NOTICE SYSTEM REQUIRED MN STATUTE, CHAPTER 216D FOR ALL UNDERGROUND UTILITY LOCATIONS.

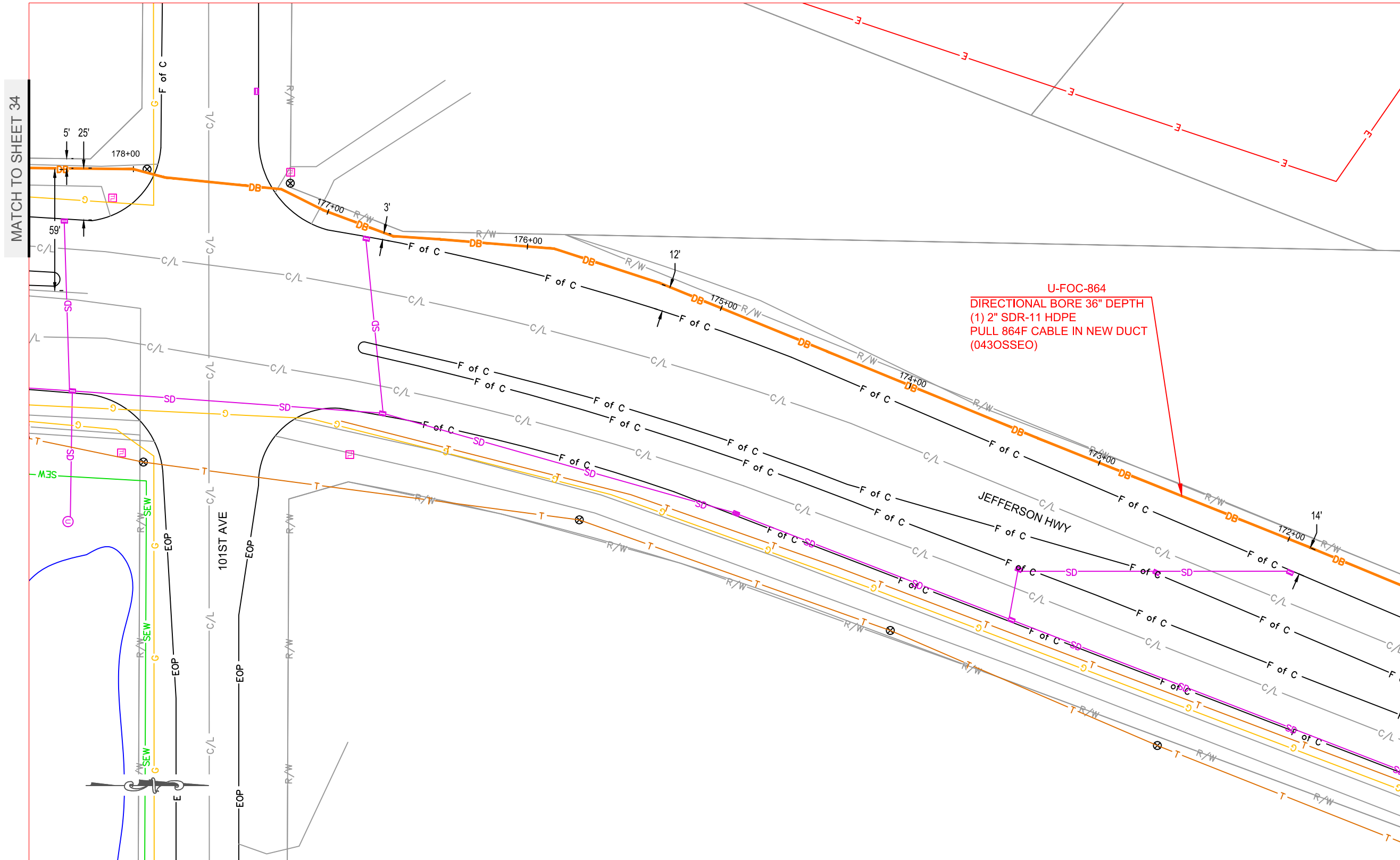


PROJECT: 0430SSEO

BH03 / ISOTOPE-ALEXANDER

OSSEO, MN

CLARIFICATION NO. QUANTITY



U-FOC-864  
DIRECTIONAL BORE 36" DEPTH  
(1) 2" SDR-11 HDPE  
PULL 864F CABLE IN NEW DUCT  
(0430SSEO)

MATCH TO SHEET 34

MATCH TO SHEET 32

McMetro  
ACCESS TRANSMISSION SERVICES, LLC  
OUTSIDE PLANT CONSTRUCTION  
TITLE: FIBER OPTIC CABLE ROUTE  
0430SSEO

DATE: 01/9/18

ENGINEER: DC

DRAWN BY: MD

REVISIONS

DATE	DESCRIPTION	INITIAL
1/19/18	Construction PKG	DC
1/22/18	QC	SJH

EXCEPT AS MAY BE OTHERWISE PROVIDED BY CONTRACT, THESE DRAWINGS AND SPECIFICATIONS SHALL REMAIN THE PROPERTY OF MCI COMMUNICATIONS SERVICES, INC. BOTH BEING ISSUED IN STRICT CONFIDENCE AND SHALL NOT BE REPRODUCED, COPIED, OR USED FOR ANY PURPOSE WITHOUT SPECIFIC WRITTEN PERMISSION.

SCALE

HORIZONTAL: 1"=50'

VERTICAL: 1"=50'

MP \_\_\_\_\_ TO MP \_\_\_\_\_

SHEET 33 OF 48

FILE: 043MIN OSSEO

THE SUBSURFACE UTILITY INFORMATION IN THIS PLAN IS UTILITY QUALITY LEVEL D. THIS UTILITY QUALITY LEVEL WAS DETERMINED ACCORDING TO THE GUIDELINES OF CI/ASCE 38-02, ENTITLED STANDARD GUIDELINES FOR THE COLLECTION AND DEPICTION OF EXISTING SUBSURFACE UTILITY DATA. IT SHALL BE THE CONTRACTORS RESPONSIBILITY TO UTILIZE THE GOPHER STATE ONE CALL EXCAVATION NOTICE SYSTEM REQUIRED MN STATUTE, CHAPTER 216D FOR ALL UNDERGROUND UTILITY LOCATIONS.

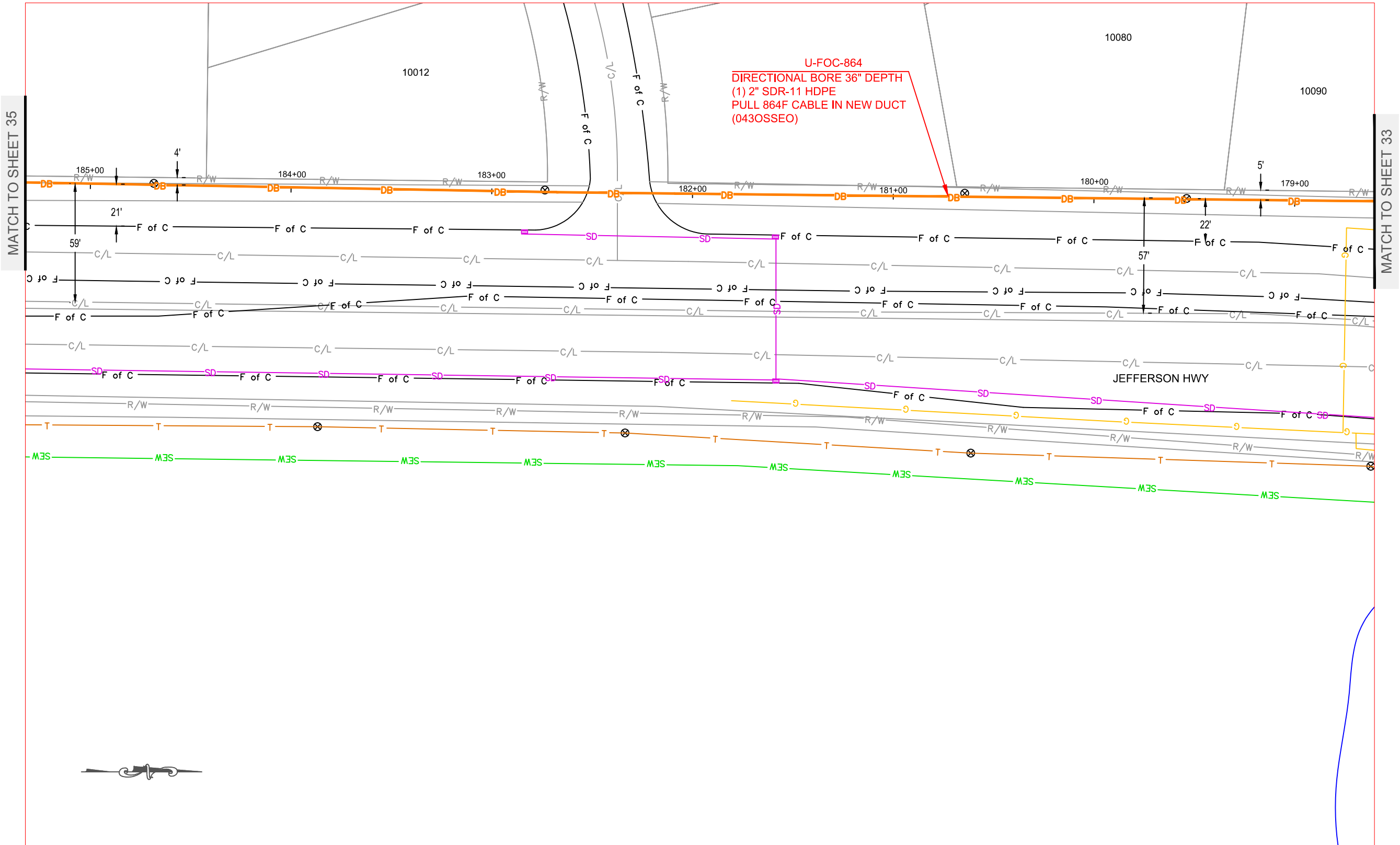


PROJECT: 0430SSEO

BH03 / ISOTOPE-ALEXANDER

OSSEO, MN

CLARIFICATION NO.	QUANTITY



MCI  
 ACCESS TRANSMISSION SERVICES, LLC  
 OUTSIDE PLANT CONSTRUCTION  
 TITLE: FIBER OPTIC CABLE ROUTE  
 0430SSEO

DATE: 01/9/18  
 ENGINEER: DC  
 DRAWN BY: MD

REVISIONS		
DATE	DESCRIPTION	INITIAL
1/19/18	Construction PKG	DC
1/22/18	QC	SJH

EXCEPT AS MAY BE OTHERWISE PROVIDED BY CONTRACT, THESE DRAWINGS AND SPECIFICATIONS SHALL REMAIN THE PROPERTY OF MCI COMMUNICATIONS SERVICES, INC. BOTH BEING ISSUED IN STRICT CONFIDENCE AND SHALL NOT BE REPRODUCED, COPIED, OR USED FOR ANY PURPOSE WITHOUT SPECIFIC WRITTEN PERMISSION.

SCALE  
 HORIZONTAL: 1"=50'  
 VERTICAL: 1"=50'  
 MP \_\_\_\_ TO MP \_\_\_\_  
 SHEET 34 OF 48  
 FILE: 043MIN OSSEO

THE SUBSURFACE UTILITY INFORMATION IN THIS PLAN IS UTILITY QUALITY LEVEL D. THIS UTILITY QUALITY LEVEL WAS DETERMINED ACCORDING TO THE GUIDELINES OF CI/ASCE 38-02, ENTITLED STANDARD GUIDELINES FOR THE COLLECTION AND DEPICTION OF EXISTING SUBSURFACE UTILITY DATA. IT SHALL BE THE CONTRACTORS RESPONSIBILITY TO UTILIZE THE GOPHER STATE ONE CALL EXCAVATION NOTICE SYSTEM REQUIRED MN STATUTE, CHAPTER 216D FOR ALL UNDERGROUND UTILITY LOCATIONS.



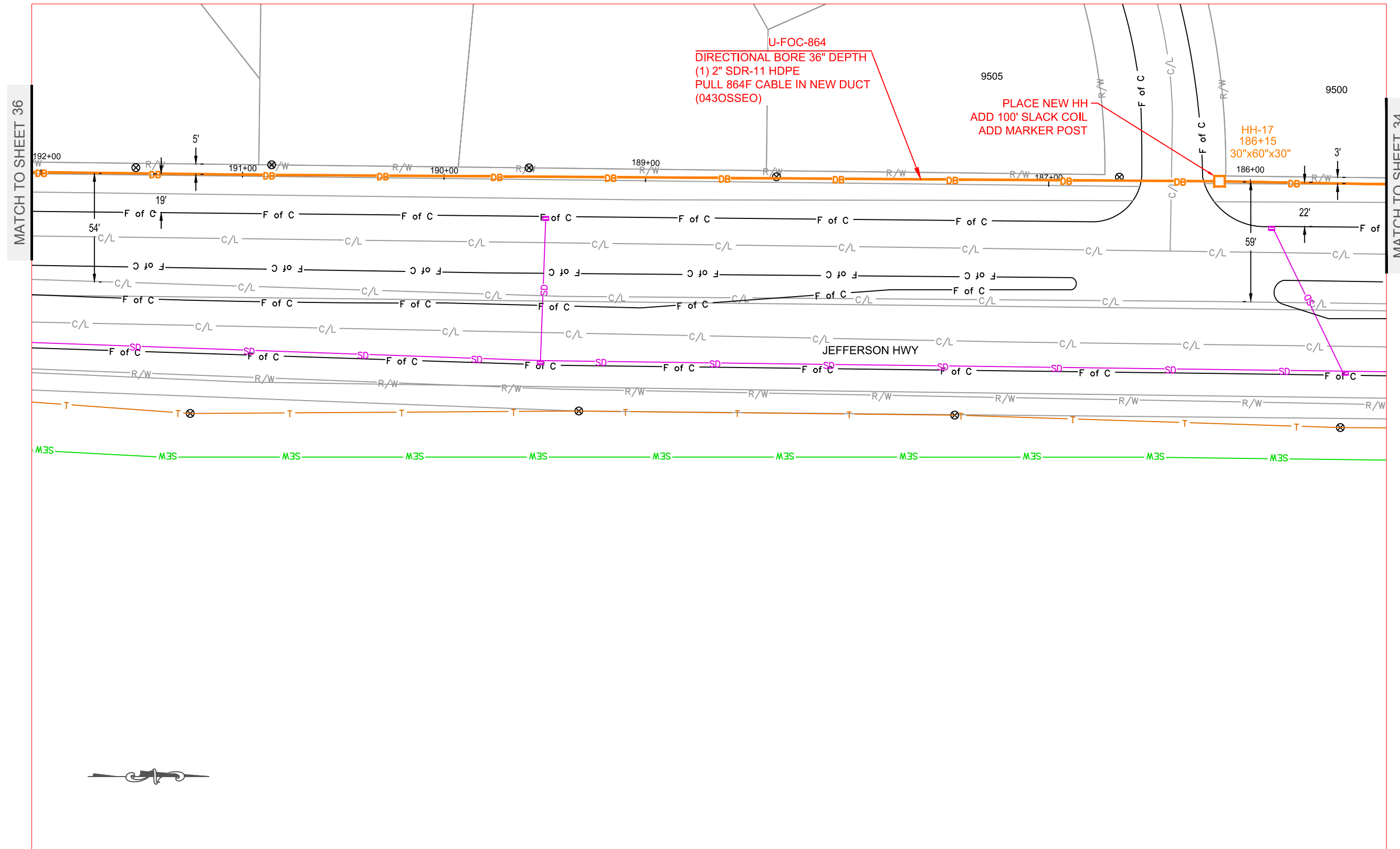
PROJECT: 043OSSEO

BH03 / ISOTOPE-ALEXANDER

OSSEO, MN

CLARIFICATION NO. QUANTITY

CLARIFICATION NO.	QUANTITY



MCImetro  
ACCESS TRANSMISSION SERVICES, LLC



OUTSIDE PLANT CONSTRUCTION  
TITLE: FIBER OPTIC CABLE ROUTE

043OSSEO

DATE: 01/9/18

ENGINEER: DC

DRAWN BY: MD

REVISIONS

DATE	DESCRIPTION	INITIAL
1/19/18	Construction PKG	DC
1/22/18	QC	SJH

EXCEPT AS MAY BE OTHERWISE PROVIDED BY CONTRACT, THESE DRAWINGS AND SPECIFICATIONS SHALL REMAIN THE PROPERTY OF MCI COMMUNICATIONS SERVICES, INC. BOTH BEING ISSUED IN STRICT CONFIDENCE AND SHALL NOT BE REPRODUCED, COPIED, OR USED FOR ANY PURPOSE WITHOUT SPECIFIC WRITTEN PERMISSION.

SCALE

HORIZONTAL: 1"=50'

VERTICAL: 1"=50'

MP \_\_\_\_\_ TO MP \_\_\_\_\_

SHEET 35 OF 48

FILE: 043MIN OSSEO



THE SUBSURFACE UTILITY INFORMATION IN THIS PLAN IS UTILITY QUALITY LEVEL D. THIS UTILITY QUALITY LEVEL WAS DETERMINED ACCORDING TO THE GUIDELINES OF CI/ASCE 38-02, ENTITLED STANDARD GUIDELINES FOR THE COLLECTION AND DEPICTION OF EXISTING SUBSURFACE UTILITY DATA. IT SHALL BE THE CONTRACTORS RESPONSIBILITY TO UTILIZE THE GOPHER STATE ONE CALL EXCAVATION NOTICE SYSTEM REQUIRED MN STATUTE, CHAPTER 216D FOR ALL UNDERGROUND UTILITY LOCATIONS.



PROJECT: 0430SSEO

BH03 / ISOTOPE-ALEXANDER

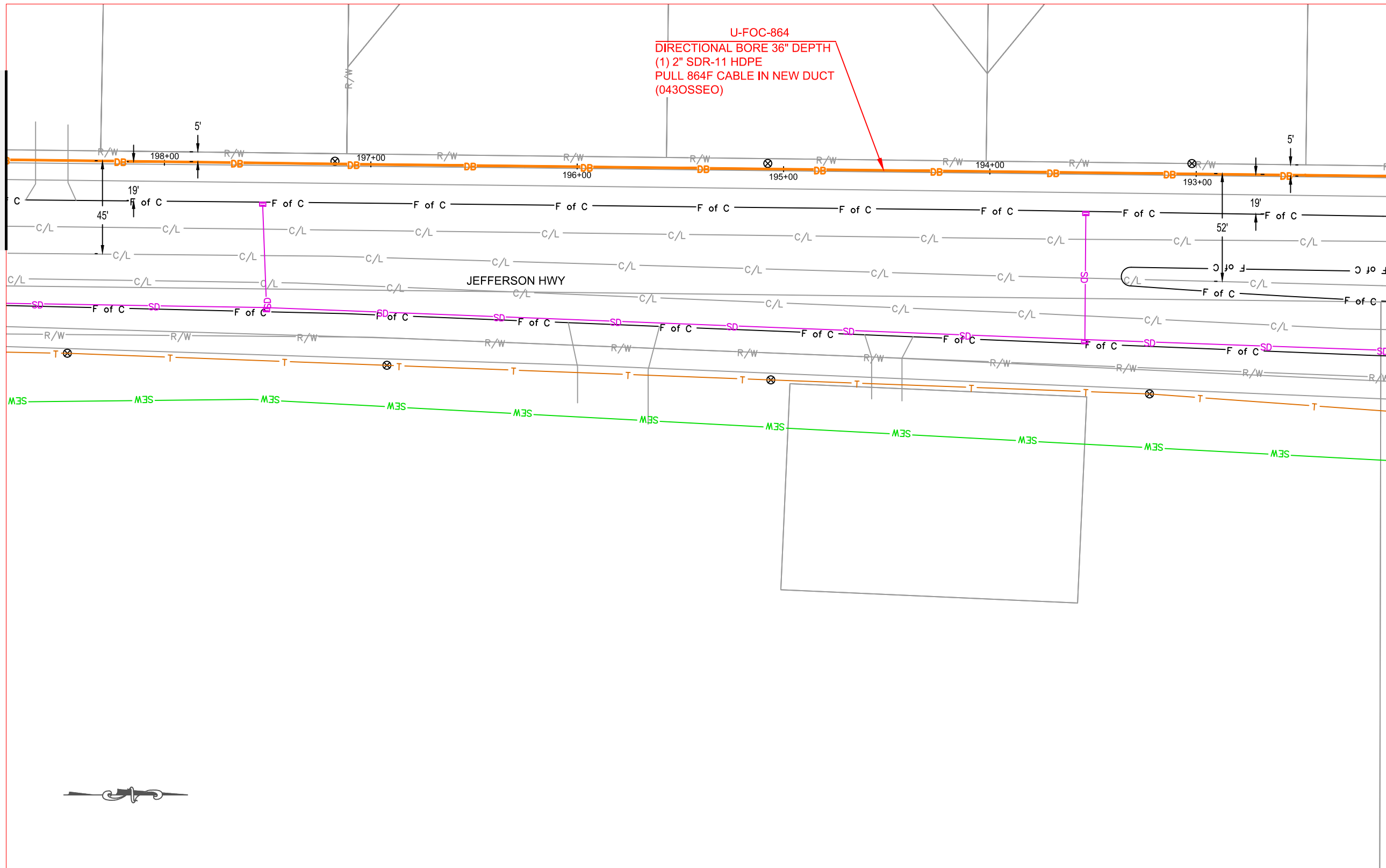
OSSEO, MN

CLARIFICATION NO. QUANTITY

MATCH TO SHEET 37

MATCH TO SHEET 35

U-FOC-864  
DIRECTIONAL BORE 36" DEPTH  
(1) 2" SDR-11 HDPE  
PULL 864F CABLE IN NEW DUCT  
(0430SSEO)



MCI metro  
ACCESS TRANSMISSION SERVICES, LLC

OUTSIDE PLANT CONSTRUCTION

TITLE: FIBER OPTIC CABLE ROUTE

0430SSEO

DATE: 01/9/18

ENGINEER: DC

DRAWN BY: MD

REVISIONS

DATE	DESCRIPTION	INITIAL
1/19/18	Construction PKG	DC
1/22/18	QC	SJH

EXCEPT AS MAY BE OTHERWISE PROVIDED BY CONTRACT, THESE DRAWINGS AND SPECIFICATIONS SHALL REMAIN THE PROPERTY OF MCI COMMUNICATIONS SERVICES, INC. BOTH BEING ISSUED IN STRICT CONFIDENCE AND SHALL NOT BE REPRODUCED, COPIED, OR USED FOR ANY PURPOSE WITHOUT SPECIFIC WRITTEN PERMISSION.

SCALE

HORIZONTAL: 1"=50'

VERTICAL: 1"=50'

MP TO MP

SHEET 36 OF 48

FILE: 043MIN OSSEO



THE SUBSURFACE UTILITY INFORMATION IN THIS PLAN IS UTILITY QUALITY LEVEL D. THIS UTILITY QUALITY LEVEL WAS DETERMINED ACCORDING TO THE GUIDELINES OF CI/ASCE 38-02, ENTITLED STANDARD GUIDELINES FOR THE COLLECTION AND DEPICTION OF EXISTING SUBSURFACE UTILITY DATA. IT SHALL BE THE CONTRACTORS RESPONSIBILITY TO UTILIZE THE GOPHER STATE ONE CALL EXCAVATION NOTICE SYSTEM REQUIRED MN STATUTE, CHAPTER 216D FOR ALL UNDERGROUND UTILITY LOCATIONS.



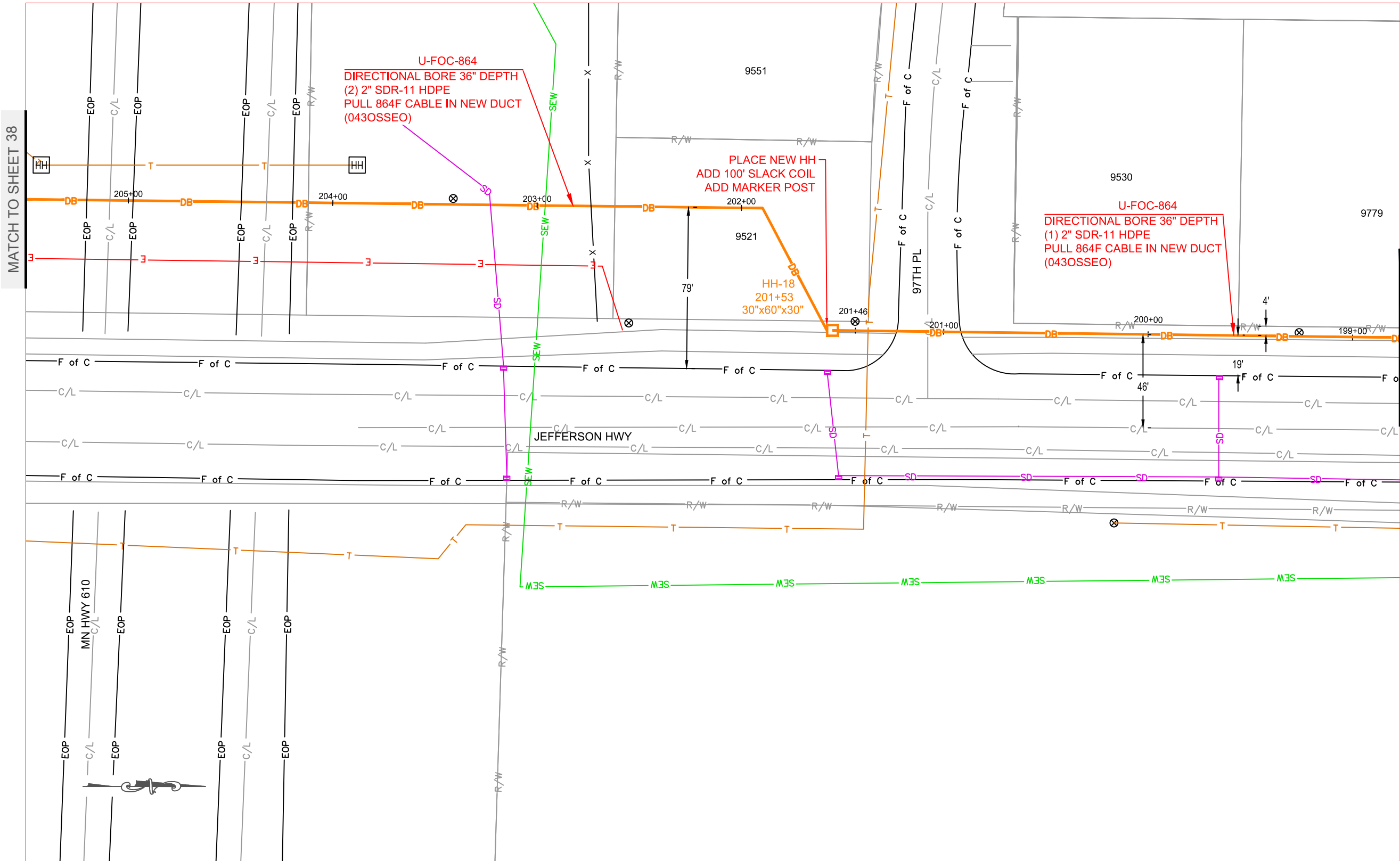
PROJECT: 043OSSEO

BH03 / ISOTOPE-ALEXANDER

OSSEO, MN

CLARIFICATION NO. QUANTITY

CLARIFICATION NO.	QUANTITY



MATCH TO SHEET 38

MATCH TO SHEET 36

MCImetro  
 ACCESS TRANSMISSION SERVICES, LLC  
 OUTSIDE PLANT CONSTRUCTION  
 TITLE: FIBER OPTIC CABLE ROUTE  
 043OSSEO

DATE: 01/9/18  
 ENGINEER: DC  
 DRAWN BY: MD

REVISIONS		
DATE	DESCRIPTION	INITIAL
1/19/18	Construction PKG	DC
1/22/18	QC	SJH

EXCEPT AS MAY BE OTHERWISE PROVIDED BY CONTRACT, THESE DRAWINGS AND SPECIFICATIONS SHALL REMAIN THE PROPERTY OF MCI COMMUNICATIONS SERVICES, INC. BOTH BEING ISSUED IN STRICT CONFIDENCE AND SHALL NOT BE REPRODUCED, COPIED, OR USED FOR ANY PURPOSE WITHOUT SPECIFIC WRITTEN PERMISSION.

SCALE  
 HORIZONTAL: 1"=50'  
 VERTICAL: 1"=50'  
 MP \_\_\_\_\_ TO MP \_\_\_\_\_  
 SHEET 37 OF 48  
 FILE: 043MIN OSSEO



THE SUBSURFACE UTILITY INFORMATION IN THIS PLAN IS UTILITY QUALITY LEVEL D. THIS UTILITY QUALITY LEVEL WAS DETERMINED ACCORDING TO THE GUIDELINES OF CI/ASCE 38-02, ENTITLED STANDARD GUIDELINES FOR THE COLLECTION AND DEPICTION OF EXISTING SUBSURFACE UTILITY DATA. IT SHALL BE THE CONTRACTORS RESPONSIBILITY TO UTILIZE THE GOPHER STATE ONE CALL EXCAVATION NOTICE SYSTEM REQUIRED MN STATUTE, CHAPTER 216D FOR ALL UNDERGROUND UTILITY LOCATIONS.

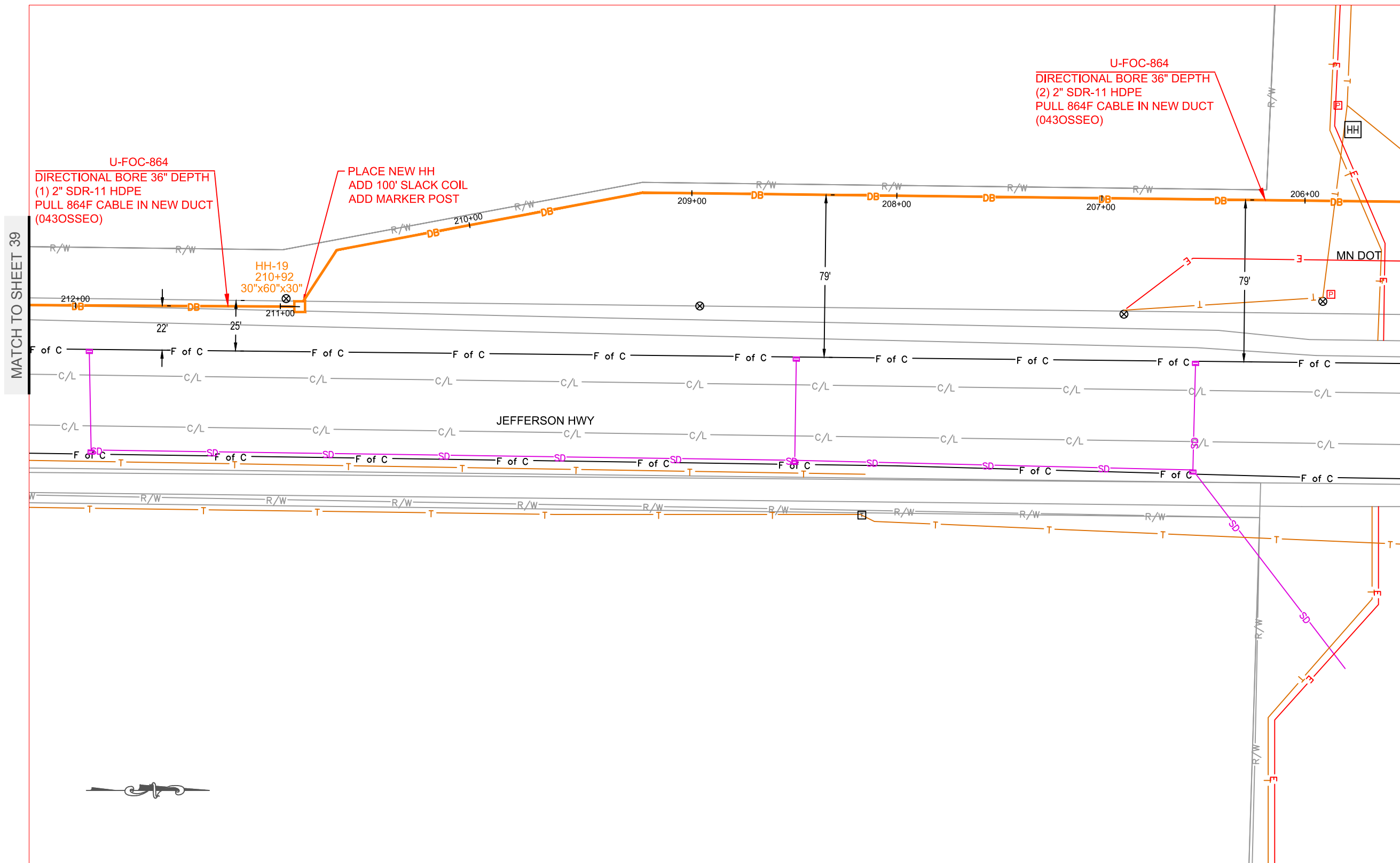


PROJECT: 043OSSEO

BH03 / ISOTOPE-ALEXANDER

OSSEO, MN

CLARIFICATION NO.	QUANTITY



MCI  
 ACCESS TRANSMISSION SERVICES, LLC  
 OUTSIDE PLANT CONSTRUCTION  
 TITLE: FIBER OPTIC CABLE ROUTE  
 043OSSEO

DATE: 01/9/18  
 ENGINEER: DC  
 DRAWN BY: MD  
**REVISIONS**  

DATE	DESCRIPTION	INITIAL
1/19/18	Construction PKG	DC
1/22/18	QC	SJH

EXCEPT AS MAY BE OTHERWISE PROVIDED BY CONTRACT, THESE DRAWINGS AND SPECIFICATIONS SHALL REMAIN THE PROPERTY OF MCI COMMUNICATIONS SERVICES, INC. BOTH BEING ISSUED IN STRICT CONFIDENCE AND SHALL NOT BE REPRODUCED, COPIED, OR USED FOR ANY PURPOSE WITHOUT SPECIFIC WRITTEN PERMISSION.

**SCALE**  
 HORIZONTAL: 1"=50'  
 VERTICAL: 1"=50'  
 MP \_\_\_\_\_ TO MP \_\_\_\_\_  
 SHEET 38 OF 48  
 FILE: 043MIN OSSEO

THE SUBSURFACE UTILITY INFORMATION IN THIS PLAN IS UTILITY QUALITY LEVEL D. THIS UTILITY QUALITY LEVEL WAS DETERMINED ACCORDING TO THE GUIDELINES OF CI/ASCE 38-02, ENTITLED STANDARD GUIDELINES FOR THE COLLECTION AND DEPICTION OF EXISTING SUBSURFACE UTILITY DATA. IT SHALL BE THE CONTRACTORS RESPONSIBILITY TO UTILIZE THE GOPHER STATE ONE CALL EXCAVATION NOTICE SYSTEM REQUIRED MN STATUTE, CHAPTER 216D FOR ALL UNDERGROUND UTILITY LOCATIONS.



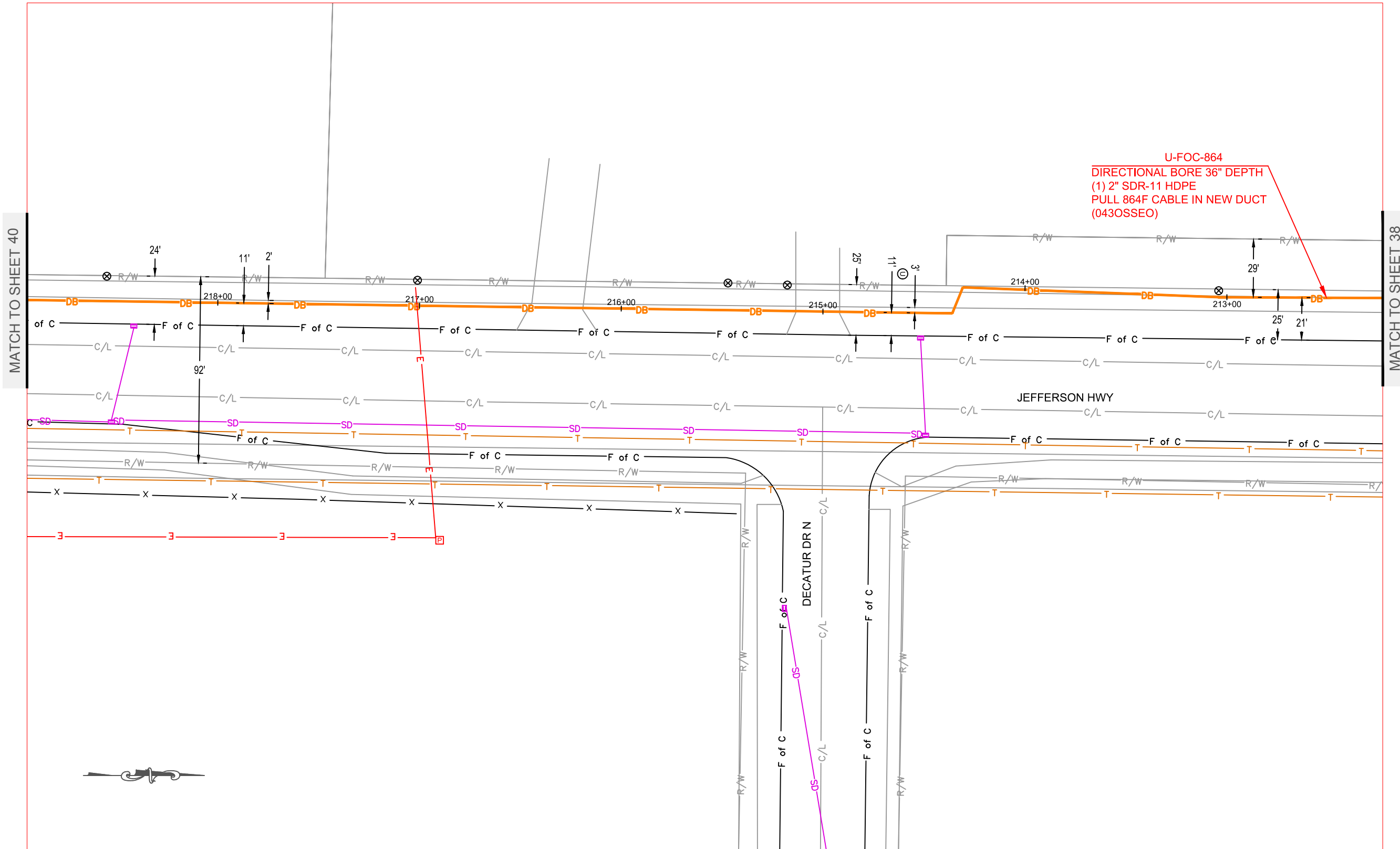
PROJECT: 043OSSEO

BH03 / ISOTOPE-ALEXANDER

OSSEO, MN

CLARIFICATION NO. QUANTITY

CLARIFICATION NO.	QUANTITY



MCImetro  
ACCESS TRANSMISSION SERVICES, LLC  
**MCI**  
OUTSIDE PLANT CONSTRUCTION  
TITLE: FIBER OPTIC CABLE ROUTE  
043OSSEO

DATE: 01/9/18

ENGINEER: DC

DRAWN BY: MD

REVISIONS

DATE	DESCRIPTION	INITIAL
1/19/18	Construction PKG	DC
1/22/18	QC	SJH

EXCEPT AS MAY BE OTHERWISE PROVIDED BY CONTRACT, THESE DRAWINGS AND SPECIFICATIONS SHALL REMAIN THE PROPERTY OF MCI COMMUNICATIONS SERVICES, INC. BOTH BEING ISSUED IN STRICT CONFIDENCE AND SHALL NOT BE REPRODUCED, COPIED, OR USED FOR ANY PURPOSE WITHOUT SPECIFIC WRITTEN PERMISSION.

SCALE

HORIZONTAL: 1"=50'

VERTICAL: 1"=50'

MP TO MP

SHEET 39 OF 48

FILE: 043MIN OSSEO

THE SUBSURFACE UTILITY INFORMATION IN THIS PLAN IS UTILITY QUALITY LEVEL D. THIS UTILITY QUALITY LEVEL WAS DETERMINED ACCORDING TO THE GUIDELINES OF CI/ASCE 38-02, ENTITLED STANDARD GUIDELINES FOR THE COLLECTION AND DEPICTION OF EXISTING SUBSURFACE UTILITY DATA. IT SHALL BE THE CONTRACTORS RESPONSIBILITY TO UTILIZE THE GOPHER STATE ONE CALL EXCAVATION NOTICE SYSTEM REQUIRED MN STATUTE, CHAPTER 216D FOR ALL UNDERGROUND UTILITY LOCATIONS.



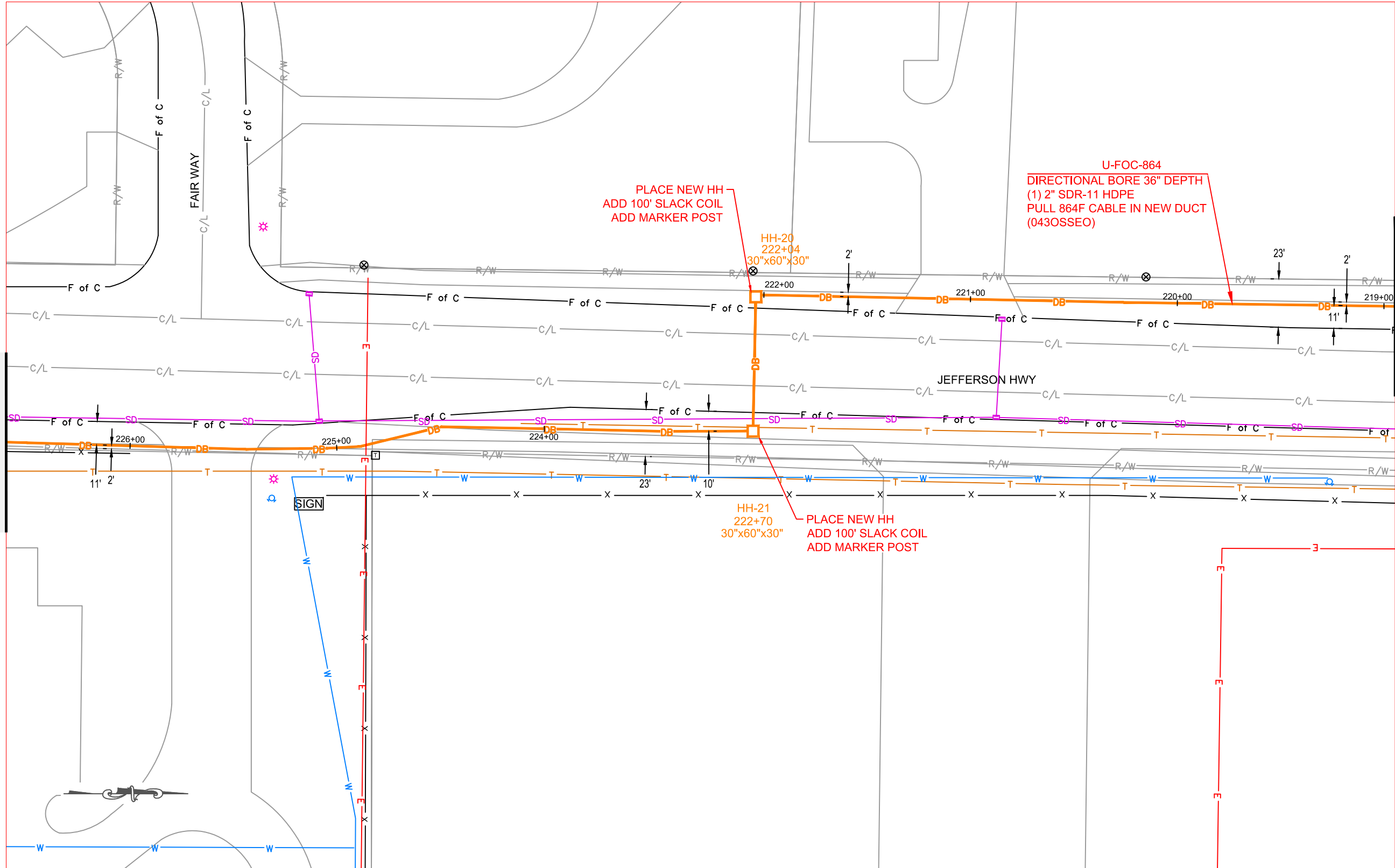
PROJECT: 0430SSEO

BH03 / ISOTOPE-ALEXANDER

OSSEO, MN

CLARIFICATION NO. QUANTITY

CLARIFICATION NO.	QUANTITY



MCI  
ACCESS TRANSMISSION SERVICES, LLC  
OUTSIDE PLANT CONSTRUCTION  
TITLE: FIBER OPTIC CABLE ROUTE  
0430SSEO

DATE: 01/9/18

ENGINEER: DC

DRAWN BY: MD

REVISIONS

DATE	DESCRIPTION	INITIAL
1/19/18	Construction PKG	DC
1/22/18	QC	SJH

EXCEPT AS MAY BE OTHERWISE PROVIDED BY CONTRACT, THESE DRAWINGS AND SPECIFICATIONS SHALL REMAIN THE PROPERTY OF MCI COMMUNICATIONS SERVICES, INC. BOTH BEING ISSUED IN STRICT CONFIDENCE AND SHALL NOT BE REPRODUCED, COPIED, OR USED FOR ANY PURPOSE WITHOUT SPECIFIC WRITTEN PERMISSION.

SCALE

HORIZONTAL: 1"=50'

VERTICAL: 1"=50'

MP TO MP

SHEET 40 OF 48

FILE: 043MIN OSSEO