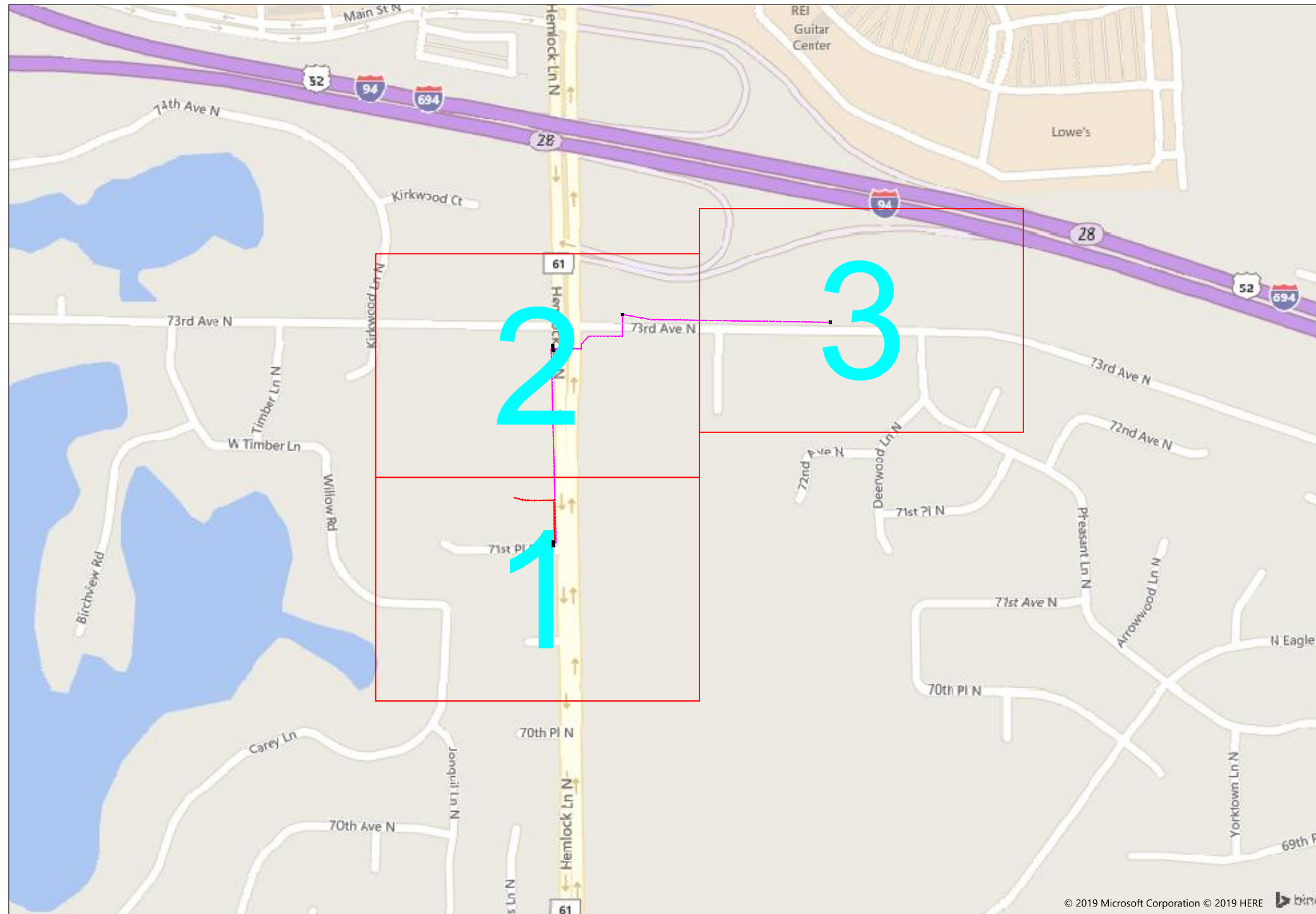


# #68633 AMW Hemlock Pines Apt



7225 Hemlock Lane North, Maple Grove, MN 55369



1" = -

Route  
AMW Hemlock Pines Apt  
City  
Maple Grove  
County  
Hennepin  
Filename  
#68633 AMW Hemlock Pines  
Work Order #  
#68633



## TRACKING

Staked By:  
-  
Drafted By:  
WJT 3/29/2019  
Built By:  
-  
As-Built By:  
-  
Revision  
Rev #1 -

Construction Totals	
Route Footage	2521
Total Underground	2521
Total Aerial	0
Underground (New)	364
Aerial (New)	0
Overpull (Ex Duct)	2157
Overlash (Ex Strand)	0
Plow	0
Bore	364
New Vaults	0
New Peds	0

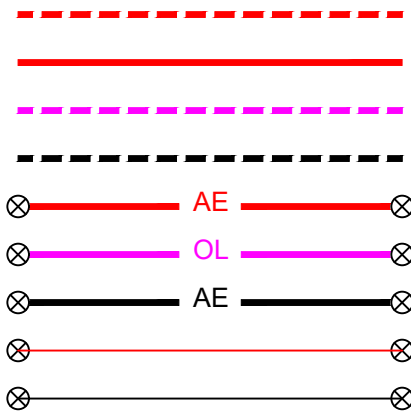
**GSOC**  
GOPHER STATE ONE CALL  
1-800-252-1116  
www.gopherstateonecall.org

Prepared by:  
 compass consultants inc.  
Perham, MN 218-346-3600  
TrustCompass.com

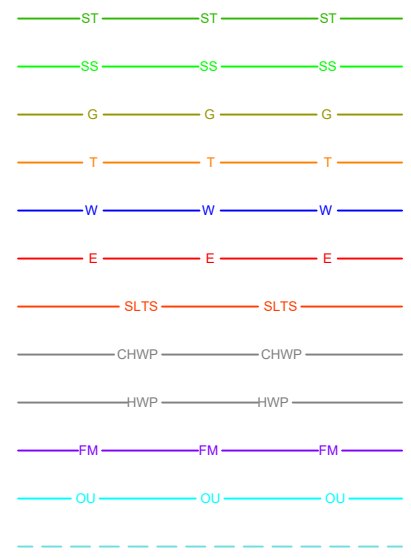
Overall

# Legend

## Fiber Linetypes



## Other Utility Linetypes



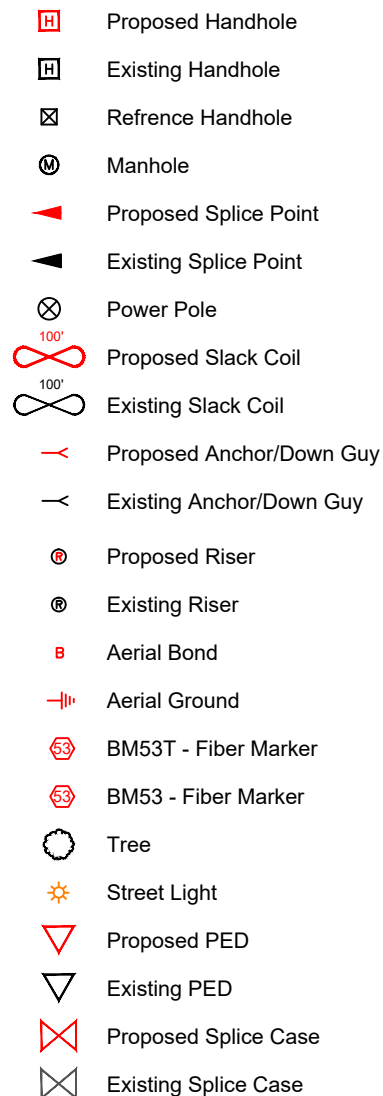
Proposed Underground Fiber - Bore  
 Proposed Underground Fiber - Plow  
 Proposed UG Fiber in Existing Duct  
 Existing Underground Fiber  
 Proposed Aerial Fiber  
 Proposed Aerial Overlash  
 Existing Aerial Fiber  
 Proposed Aerial Strand  
 Existing Aerial Strand

Storm Sewer  
 Sanitary Sewer  
 Gas Line  
 Tele./Comm. Line  
 Water Line  
 Electric Line  
 Street light/Traffic signal  
 District Cooling  
 District Heating  
 Force Main  
 Other Utility or Unknown  
 Utility Easement

## Abbreviations

CL - Center Line  
 R/W - Right of Way  
 BOC - Back of Curb  
 FC - Front of Curb  
 EOR - Edge of Road  
 S/W - Sidewalk  
 HH - Handhole  
 MH - Manhole

## Symbols



## Construction Totals

Route Footage	2521
Total Underground	2521
Total Aerial	0
Underground (New)	364
Aerial (New)	0
Overpull (Ex Duct)	2157
Overlash (Ex Strand)	0
Plow	0
Bore	364
New Vaults	0
New Peds	0

## Fiber

TBD Fiber	0
12 Fiber	0
24 Fiber	0
36 Fiber	0
48 Fiber	2821
72 Fiber	0
96 Fiber	0
144 Fiber	0
288 Fiber	0
12 Dielectric Fiber	0
24 Dielectric Fiber	0
36 Dielectric Fiber	0
48 Dielectric Fiber	0
72 Dielectric Fiber	0
96 Dielectric Fiber	0
144 Dielectric Fiber	0
288 Dielectric Fiber	0

## Materials

Duct (1.25")	364
Vault( Small)	0
Vault (Medium)	0
Vault (Large)	0
PED BD5	0
Warning Sign	0
Locate Terminal	0
Ground Rod	0
Strand	0



1" = -

Route  
 AMW Hemlock Pines Apt  
 City  
 Maple Grove  
 County  
 Hennepin  
 Filename  
 #68633 AMW Hemlock Pines  
 Work Order #  
 #68633



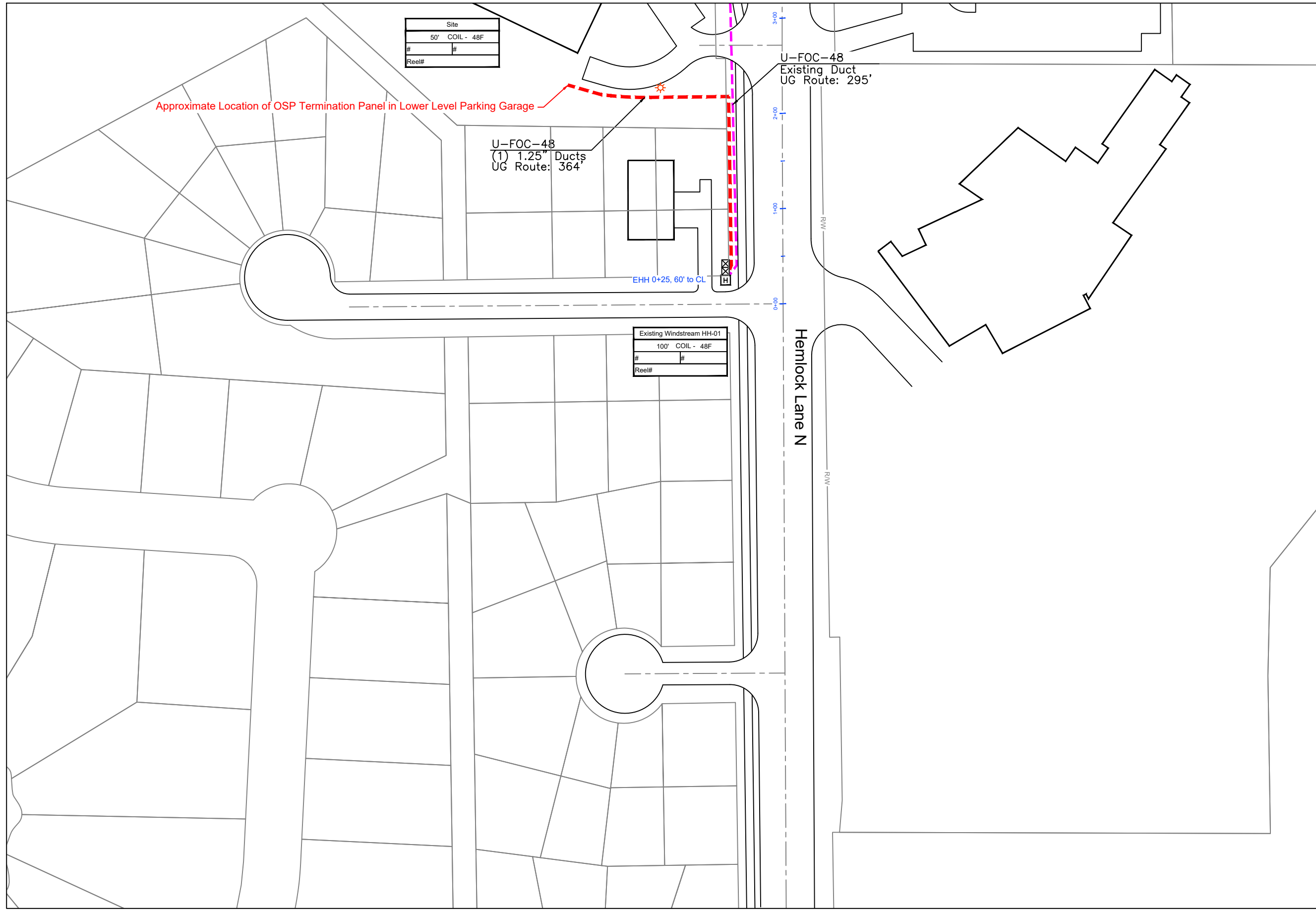
## TRACKING

Staked By:  
 - -  
 Drafted By:  
 WJT 3/29/2019  
 Built By:  
 - -  
 As-Built By:  
 - -  
 Revision  
 Rev #1 - -

**GSOC**  
 GOPHER STATE ONE CALL  
 1-800-252-1116  
 www.gopherstateonecall.org

Prepared by:  
  
 Perham, MN 218-346-3600  
 TrustCompass.com

## Legend



Site	50' COIL - 48F
#	
Reel#	

Existing Windstream HH-01	100' COIL - 48F
#	
Reel#	



1" = 1:100

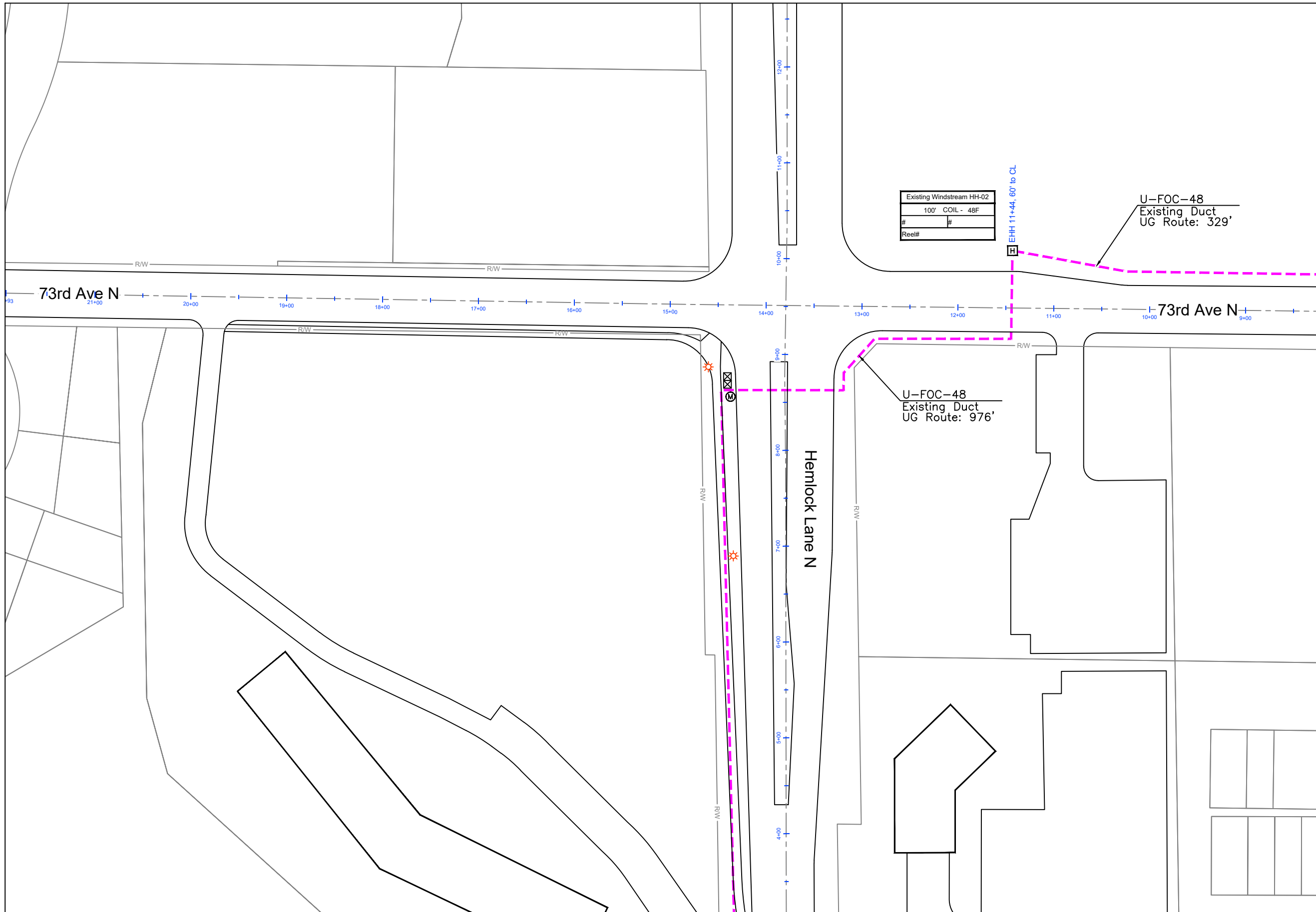
Route	AMW Hemlock Pines Apt
City	Maple Grove
County	Hennepin
Filename	#68633 AMW Hemlock Pines
Work Order #	#68633



<b>TRACKING</b>	
Staked By:	-
Drafted By:	WJT 3/29/2019
Built By:	-
As-Built By:	-
Revision	Rev #1 -

**GSOC**  
 GOPHER STATE ONE CALL  
 1-800-252-1116  
 www.gopherstateonecall.org

Prepared by:  
 compass consultants inc.  
 Perham, MN 218-346-3600  
 TrustCompass.com



1" = 1:100

Route  
AMW Hemlock Pines Apt  
City  
Maple Grove  
County  
Hennepin  
Filename  
#68633 AMW Hemlock Pines  
Work Order #  
#68633



**TRACKING**

Staked By:	-
Drafted By:	WJT 3/29/2019
Built By:	-
As-Built By:	-
Revision	Rev #1 -

Sheet 3

**GSOC**  
GOPHER STATE ONE CALL  
1-800-252-1116  
www.gopherstateonecall.org

Prepared by:  
 **compass**  
consultants inc.  
Perham, MN 218-346-3600  
TrustCompass.com

Sheet 2

Sheet 1



1" = 1:100

Route  
 AMW Hemlock Pines Apt

City  
 Maple Grove

County  
 Hennepin

Filename  
 #68633 AMW Hemlock Pines

Work Order #  
 #68633



TRACKING	
Staked By:	-
Drafted By:	-
WJT	3/29/2019
Built By:	-
As-Built By:	-
Revision	-
Rev #1	-

**GSOC**  
 GOPHER STATE ONE CALL  
 1-800-252-1116  
 www.gopherstateonecall.org

Prepared by:  
 **compass**  
 consultants inc.  
 Perham, MN 218-346-3600  
 TrustCompass.com

Sheet 3

