

15800 ELM ROAD N,
MAPLE GROVE, MN 55311

CITY OF MAPLE GROVE
PERMIT

JOB PLACES NEW
UNDERGROUND DUCT, AND
FIBER CABLE FROM AN
EXISTING HANDHOLE TO AN
EXISTING CABINET.

JOB LOCATION

PROJECT: N.219282

CENTURYLINK

ENGINEER:

ERIC FREESE

PHONE:

651-312-5369

EMAIL:

Eric.Freese2@CenturyLink.com

POWER ENGINEERS

DRAWN BY:

SEMON GETAHUN

EMAIL:

SEMON.GETAHUN@POWERENG.COM

FIELD ENGINEER:

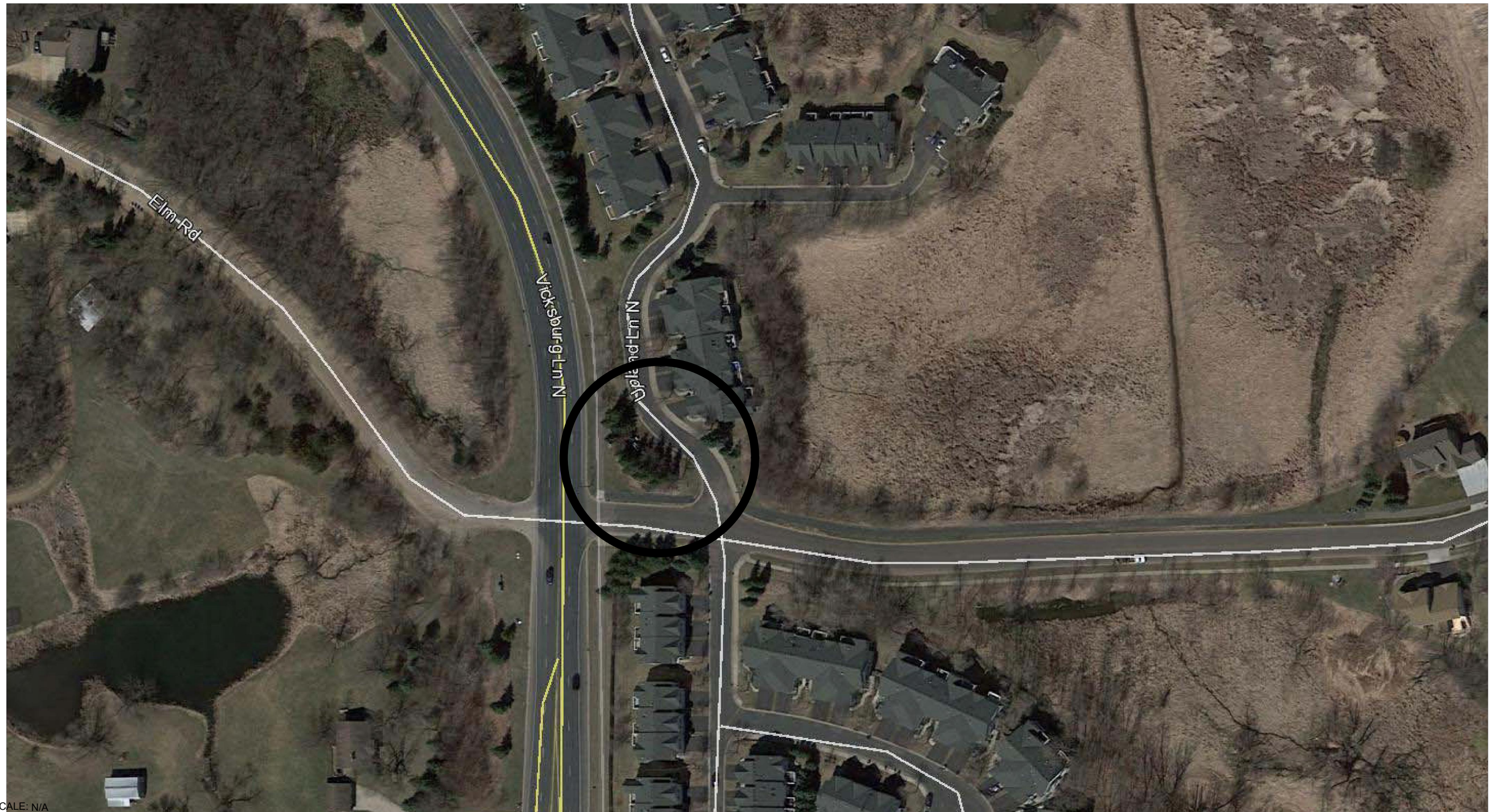
SEMON GETAHUN

SHEET: 01

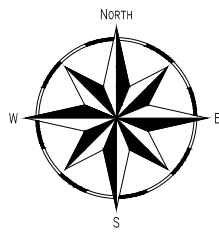
REV: 02

OF: 02

DATE: 08/3/2017



SCALE: N/A



NOTE: THERE IS EXISTING EASEMENT.

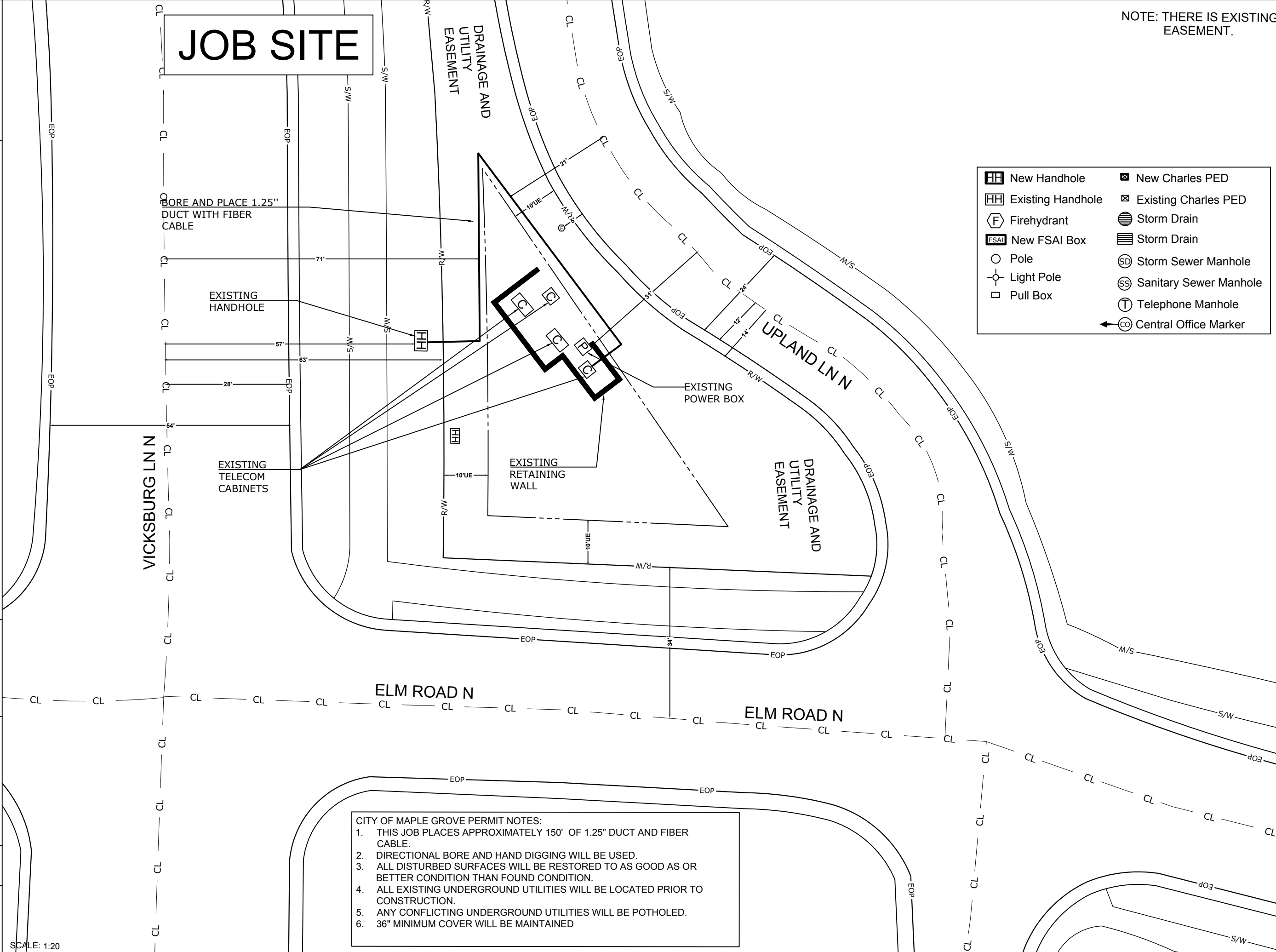
JOB SITE

15800 ELM ROAD N,
MAPLE GROVE, MN 55311

CITY OF MAPLE GROVE
PERMIT

JOB PLACES NEW
UNDERGROUND DUCT, AND
FIBER CABLE FROM AN
EXISTING HANDHOLE TO AN
EXISTING CABINET.

	New Handhole		New Charles PED
	Existing Handhole		Existing Charles PED
	Firehydrant		Storm Drain
	New FSAI Box		Storm Drain
	Pole		Storm Sewer Manhole
	Light Pole		Sanitary Sewer Manhole
	Pull Box		Telephone Manhole
			Central Office Marker



PROJECT: N.219282

CENTURYLINK
ENGINEER:
ERIC FREESE
PHONE:
651-312-5369
EMAIL:
Eric.Freese2@CenturyLink.com

POWER ENGINEERS
DRAWN BY:
SEMON GETAHUN
EMAIL:
SEMON.GETAHUN@POWERENG.COM

FIELD ENGINEER:
SEMON GETAHUN

SHEET: 02 REV: 02
OF: 02 DATE: 08/3/2017

- CITY OF MAPLE GROVE PERMIT NOTES:
1. THIS JOB PLACES APPROXIMATELY 150' OF 1.25" DUCT AND FIBER CABLE.
 2. DIRECTIONAL BORE AND HAND DIGGING WILL BE USED.
 3. ALL DISTURBED SURFACES WILL BE RESTORED TO AS GOOD AS OR BETTER CONDITION THAN FOUND CONDITION.
 4. ALL EXISTING UNDERGROUND UTILITIES WILL BE LOCATED PRIOR TO CONSTRUCTION.
 5. ANY CONFLICTING UNDERGROUND UTILITIES WILL BE POTHOLED.
 6. 36" MINIMUM COVER WILL BE MAINTAINED



SCALE: 1:20