

15800 ELM ROAD N,  
MAPLE GROVE, MN 55311

CITY OF MAPLE GROVE  
PERMIT

JOB PLACES NEW TELECOM  
CABINET, UNDERGROUND  
DUCT, AND FIBER AND  
COPPER CABLES.

PROJECT: N.219282

CENTURYLINK

ENGINEER:

ERIC FREESE

PHONE:

651-312-5369

EMAIL:

Eric.Freesee2@CenturyLink.com

POWER ENGINEERS

DRAWN BY:

SEMOM GETAHUN

EMAIL:

SEMOM.GETAHUN@POWERENG.COM

FIELD ENGINEER:

SEMOM GETAHUN

SHEET: 01

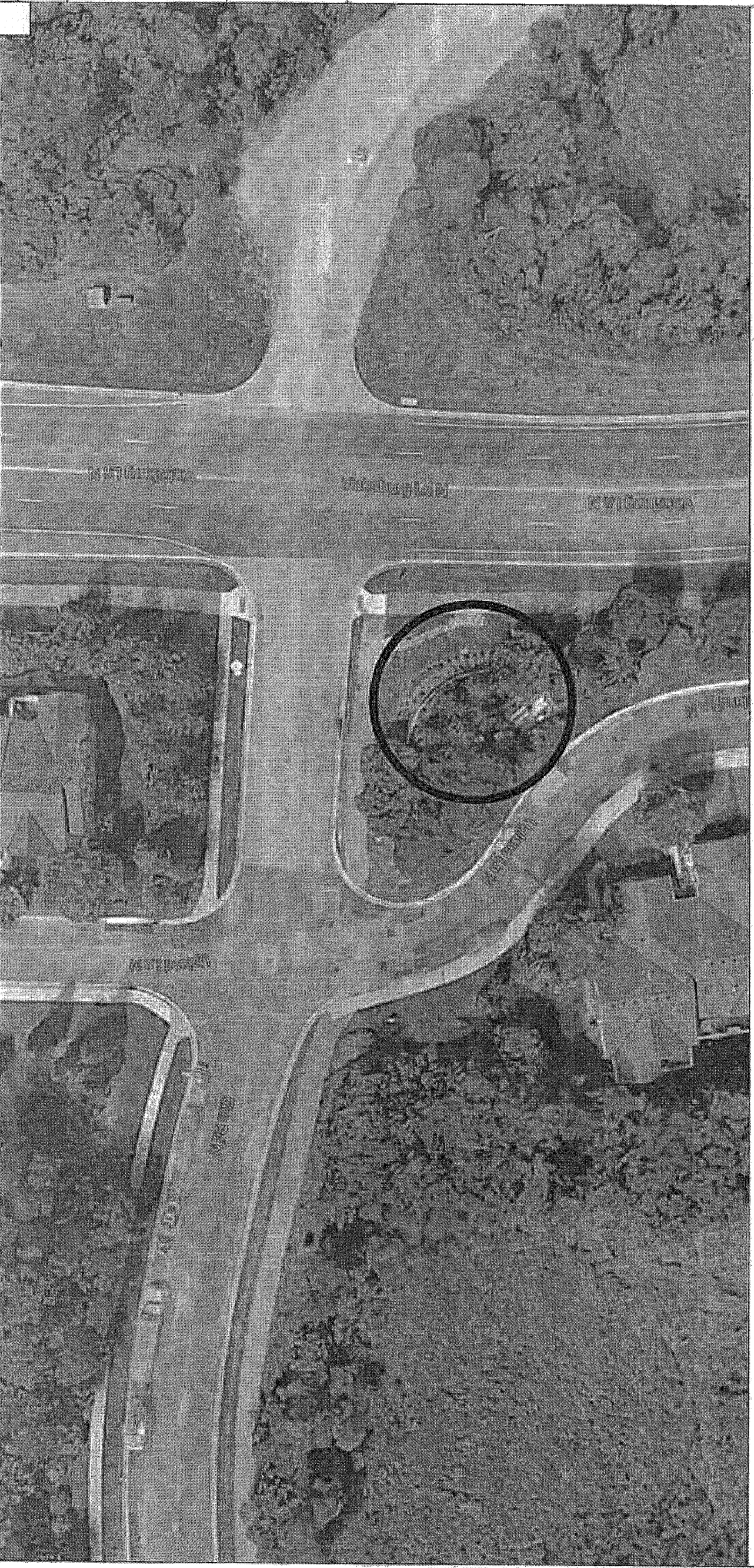
OF: 02

REV: 01

DATE: 05/12/2017

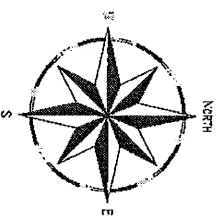


# JOB LOCATION



SCALE: N/A





15800 ELM ROAD N,  
 MAPLE GROVE, MN 55311  
 CITY OF MAPLE GROVE  
 PERMIT

JOB PLACES NEW TELECOM  
 CABINET, UNDERGROUND  
 DUCT, AND FIBER AND  
 COPPER CABLES.

PROJECT: N.219282

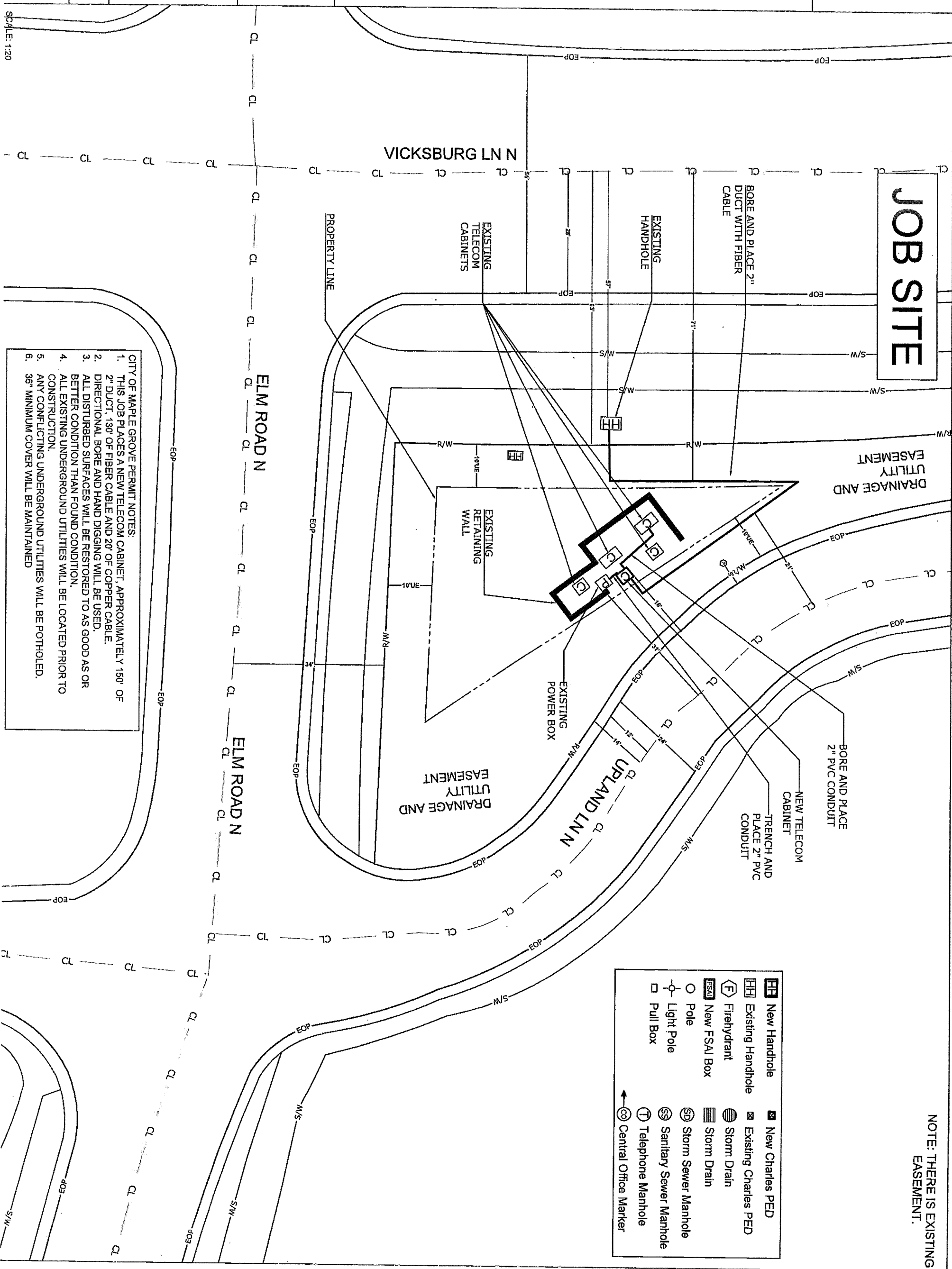
CENTURYLINK  
 ENGINEER:  
 ERIC FREESE  
 PHONE:  
 651-312-5369  
 EMAIL:  
 Eric.Frees2@CenturyLink.com

POWER ENGINEERS  
 DRAWN BY:  
 SEMON GETAHUN  
 EMAIL:  
 SEMON.GETAHUN@POWERENG.COM  
 FIELD ENGINEER:  
 SEMON GETAHUN

REV: 01  
 DATE: 09/12/2017  
 SHEET: 02



**JOB SITE**



- CITY OF MAPLE GROVE PERMIT NOTES:
1. THIS JOB PLACES A NEW TELECOM CABINET, APPROXIMATELY 150' OF 2" DUCT, 130' OF FIBER CABLE AND 20' OF COPPER CABLE.
  2. DIRECTIONAL BORE AND HAND DIGGING WILL BE USED.
  3. ALL DISTURBED SURFACES WILL BE RESTORED TO AS GOOD AS OR BETTER CONDITION THAN FOUND CONDITION.
  4. ALL EXISTING UNDERGROUND UTILITIES WILL BE LOCATED PRIOR TO CONSTRUCTION.
  5. ANY CONFLICTING UNDERGROUND UTILITIES WILL BE POTHOLED.
  6. 36" MINIMUM COVER WILL BE MAINTAINED

NOTE: THERE IS EXISTING EASEMENT.

	New Handhole		New Charles PED
	Existing Handhole		Existing Charles PED
	Firehydrant		Storm Drain
	New FSAI Box		Storm Drain
	Pole		Storm Sewer Manhole
	Light Pole		Sanitary Sewer Manhole
	Pull Box		Telephone Manhole
			Central Office Marker

SCALE: 1:20